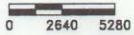
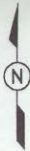
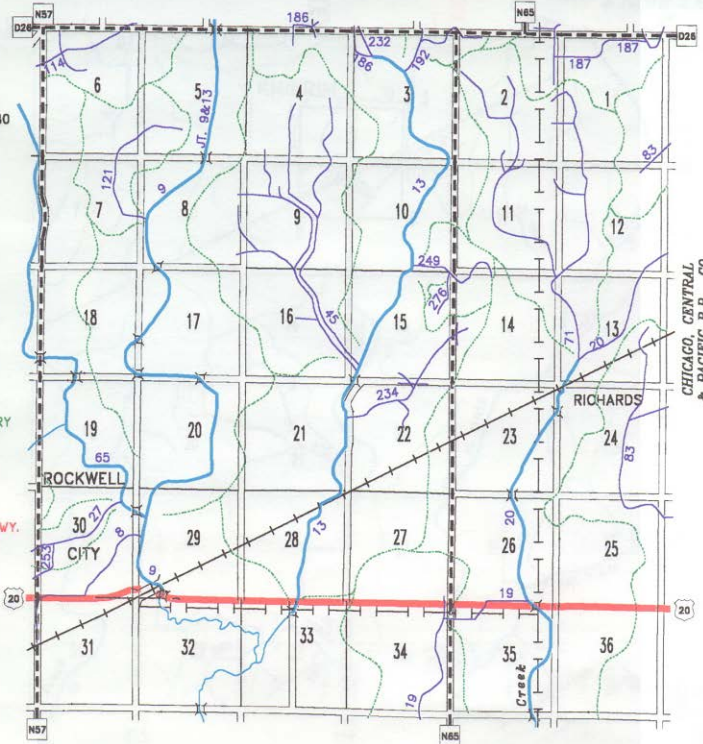


R-32-W



- LEGEND**
- RIVER
 - NATURAL STREAM/CREEK
 - D.D. TILE
 - OPEN D.D. DITCH
 - D.D. WATER SHED BOUNDARY
 - 222 COUNTY D.D. NUMBER
 - JT. 69&10 JOINT D.D. NUMBER (FIRST NUMBER IS CALHOUN D.D. NUMBER)
 - PAVED COUNTY HWY.
 - PAVED STATE/FEDERAL HWY.
 - GRAVEL ROAD
 - BRIDGE
 - RAILROAD TRACKS
 - PIPE LINE



CHICAGO, CENTRAL & PACIFIC R.R. CO.

T-88-N