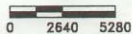
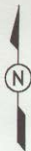
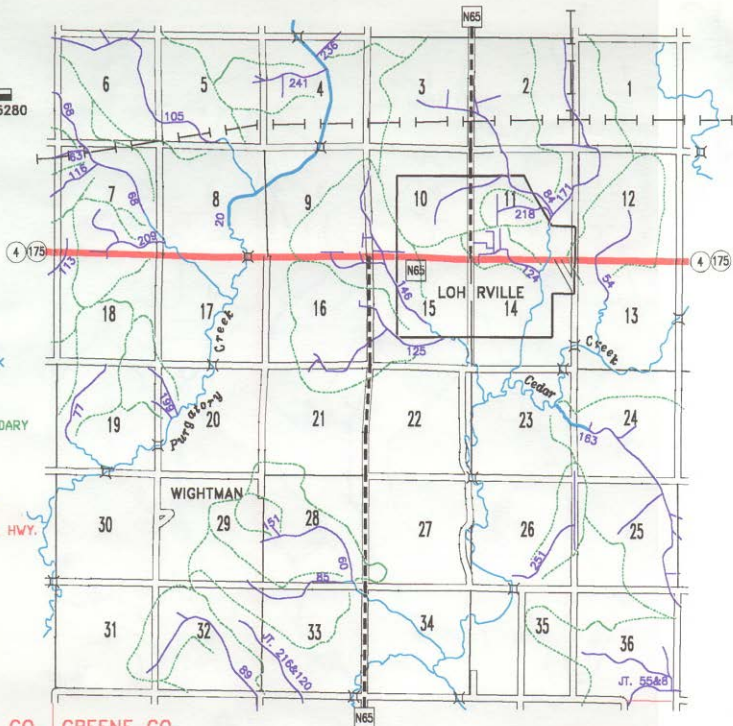


R-32-W



- LEGEND**
- RIVER
  - NATURAL STREAM/CREEK
  - D.D. TILE
  - OPEN D.D. DITCH
  - D.D. WATER SHED BOUNDARY
  - 222 COUNTY D.D. NUMBER
  - JT. 69&10 JOINT D.D. NUMBER (FIRST NUMBER IS CALHOUN D.D. NUMBER)
  - PAVED COUNTY HWY.
  - PAVED STATE/FEDERAL HWY.
  - GRAVEL ROAD
  - BRIDGE
  - RAILROAD TRACKS
  - PIPE LINE

NORTHERN NATURAL  
GAS COMPANY

T-86-N

CARROLL CO. GREENE CO.