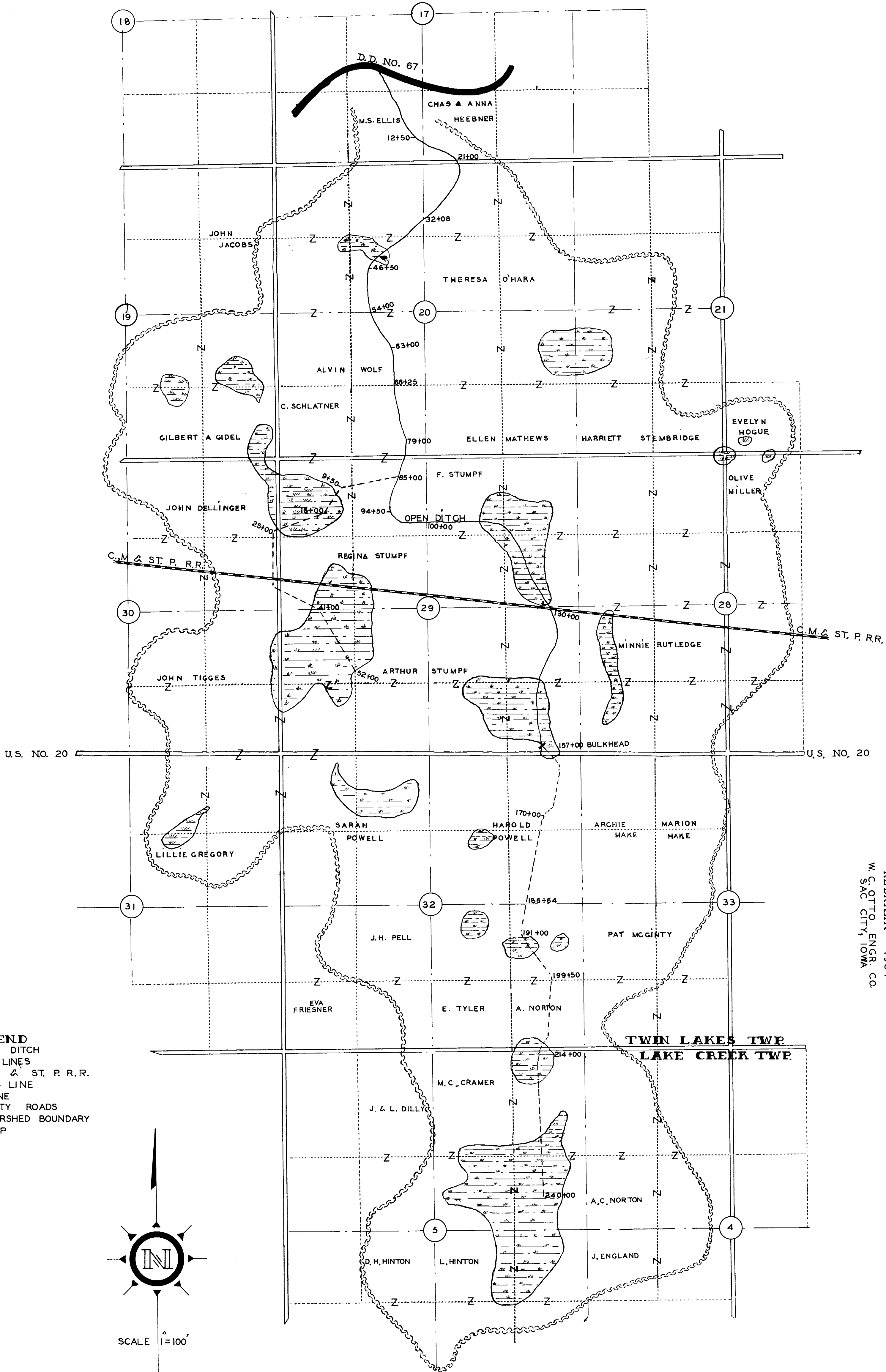


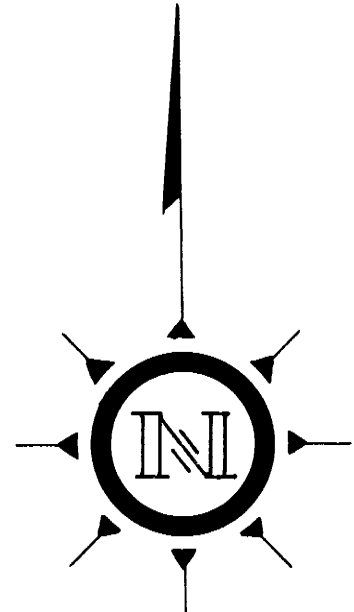
# DRAINAGE DISTRICT NO. 16

SEC. 4-5 T-87-N R-33-W  
 SEC. 17-19-20-21-28-29-30-31-32-33 T-88-N R-33-W  
 CALHOUN COUNTY, IOWA

REDRAWN 1954  
 W. C. OTTO, ENGR. CO.  
 SACS CITY, IOWA



**LEGEND**  
 OPEN DITCH  
 TILE LINES  
 C. M. & ST. P. R. R.  
 1/4 LINE  
 COUNTY ROADS  
 WATERSHED BOUNDARY  
 SWAMP



SCALE 1" = 100'