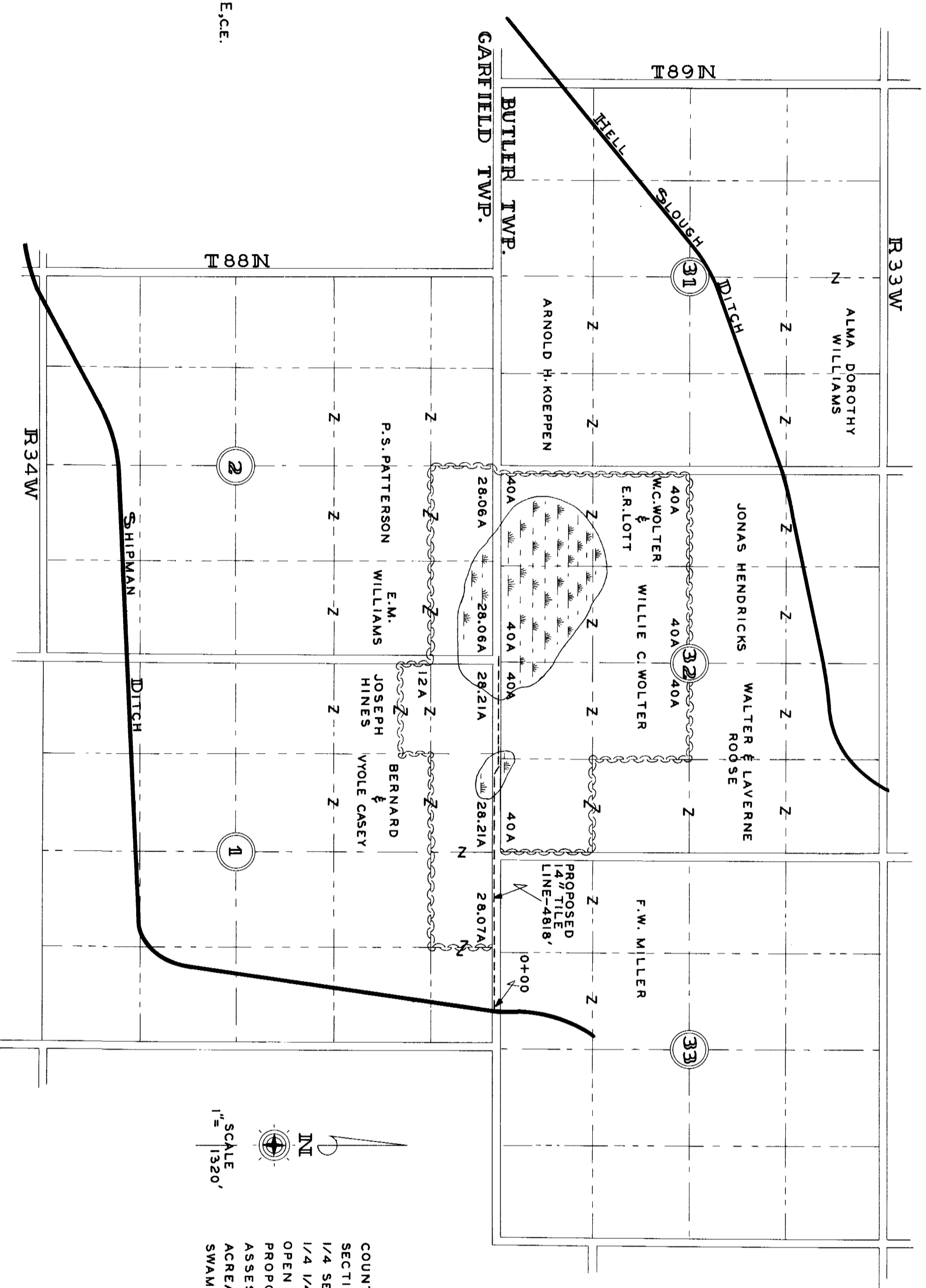
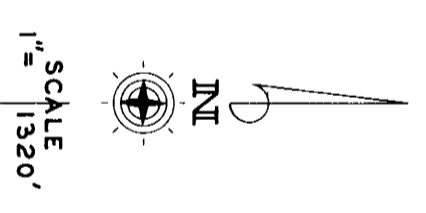


PLAT & PROFILE
 FOR
 DRAINAGE DISTRICT NO. 23
 CALHOUN COUNTY, IOWA

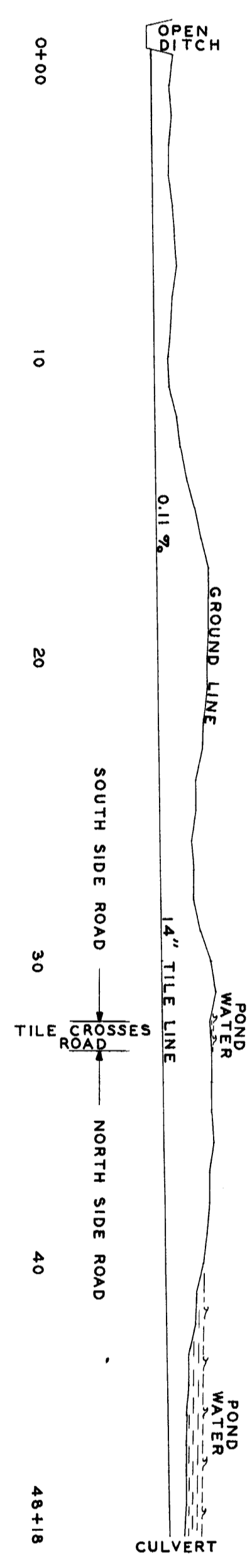
SURVEYED JUNE 22ND 1903 BY JAMES McCLURE, C.E.
 REDRAWN BY W.C. OTTO ENGR., CO. SAC CITY, IOWA
 JANUARY 20TH 1954



- LEGEND**
- COUNTY ROADS ————
 - SECTION LINE ————
 - 1/4 SECTION LINE - - - -
 - 1/4 1/4 SECTION LINE - - - -
 - OPEN DITCH ————
 - PROPOSED TILE LINE ————
 - ASSESSMENT BOUNDARY ————
 - ACREAGE FOR ASSESSMENT ————
 - SWAMP OR POND 28.21A



TILE DEPTH	5.50 FT.
	4.40
	4.78
	4.27
	4.41
	5.20
	5.44
	5.76
	4.77
	4.14
	3.36
	3.52
	5.21
	6.40
	7.80
	9.48
	11.00
	12.81
	13.00
	12.27
	12.10
	12.05
	11.34
	10.53
	9.00
	8.70
	8.00
	8.10
	8.18
	9.37
	12.14
	13.15
	11.30
	12.00
	12.00
	12.04
	12.10
	11.00
	10.73
	10.20
	7.44
	6.50
	5.32
	4.46
	5.50
	5.10
	4.00
	3.60
	4.00



5' PROFILE SCALE
 1000'