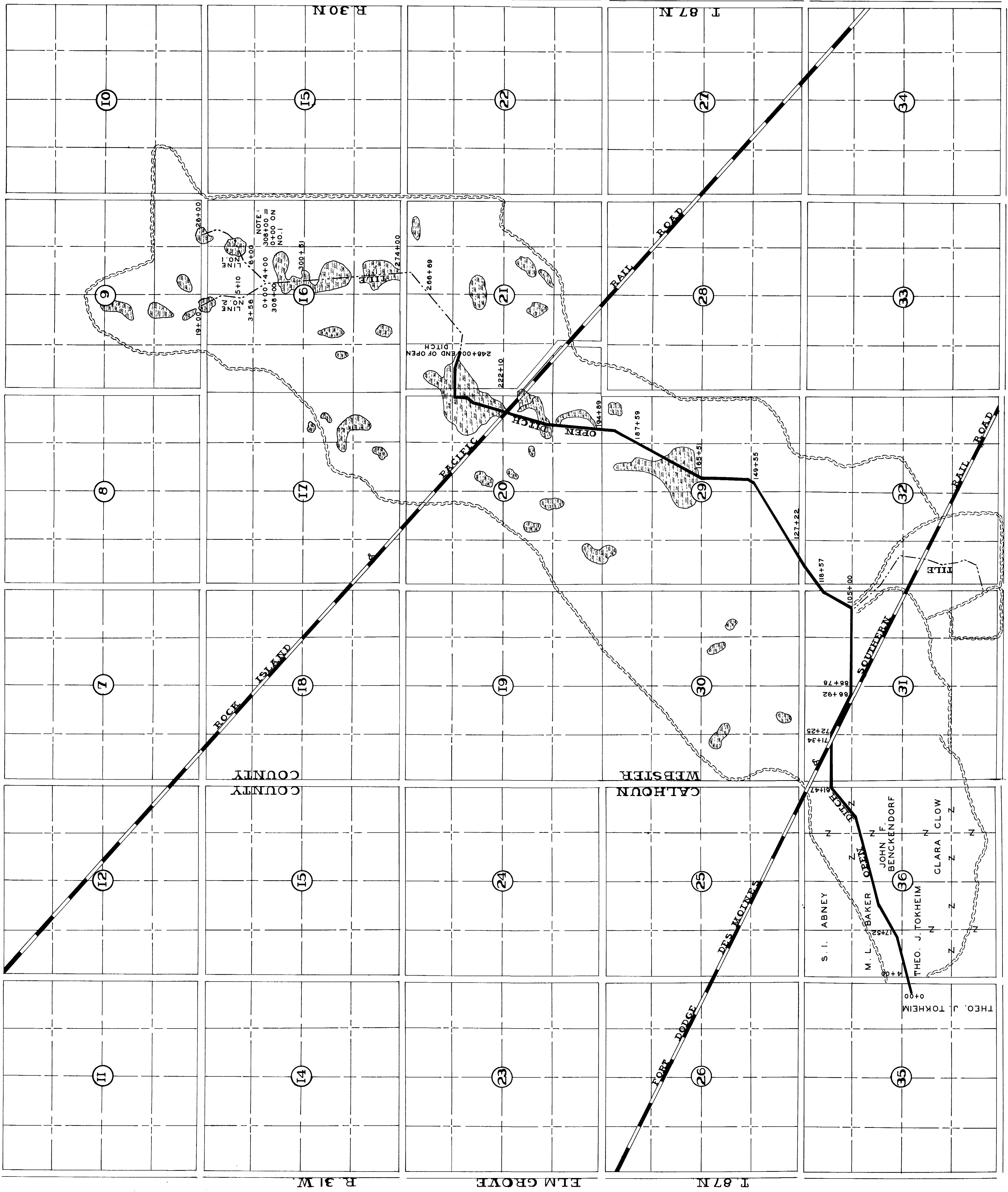
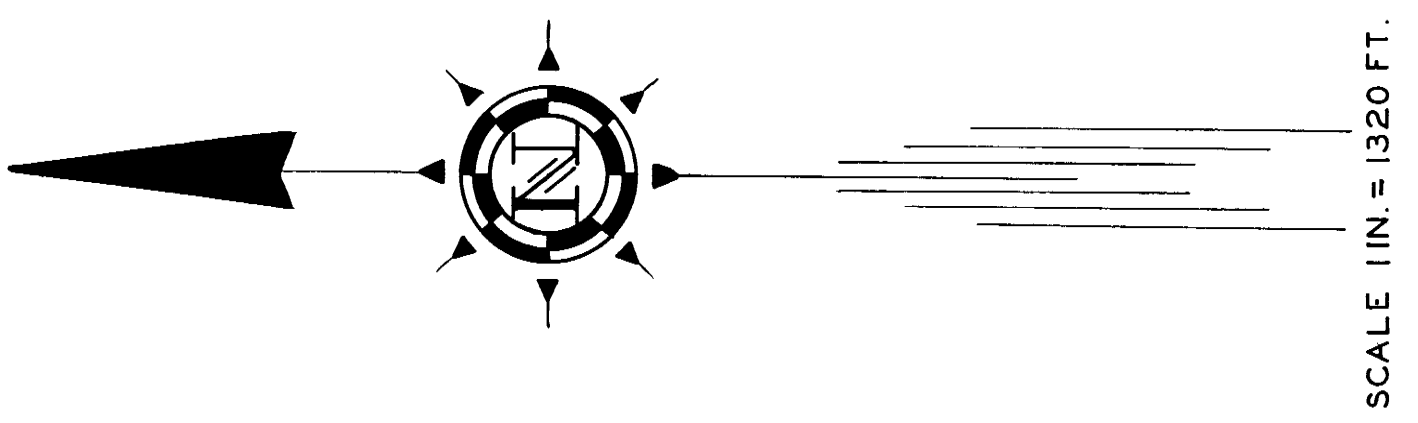


DRAINAGE DISTRICT NO. 12 & 38
 OF
 PLAT

REDRAWN BY W. C. OTTO ENGR. CO SAC CITY IOWA JAN. 26 1954

T 87 N R 31 W WEBSTER COUNTY
 T 87 N R 31 W CALHOUN COUNTY

TITLE SIZE
 WEST LINE STA. 248+00 TO 308+00 20" TILE
 EAST LINE STA. 248+00 TO 278+00 20" TILE
 STA. 278+00 TO 298+00 12" TILE
 LINE NO. 1 STA. 298+00 TO 308+00 10" TILE
 STA. 4+00 TO 4+00 16" TILE
 STA. 4+00 TO 26+00 12" TILE
 LINE NO. 2 STA. 0+00 TO 19+00 14" TILE
 NOTE: STA. 248+00 TO STA. 308+00 IS A DOUBLE LINE



CALHOUN COUNTY
 WEBSTER COUNTY

T 87 N
 ELM GROVE
 R 31 W