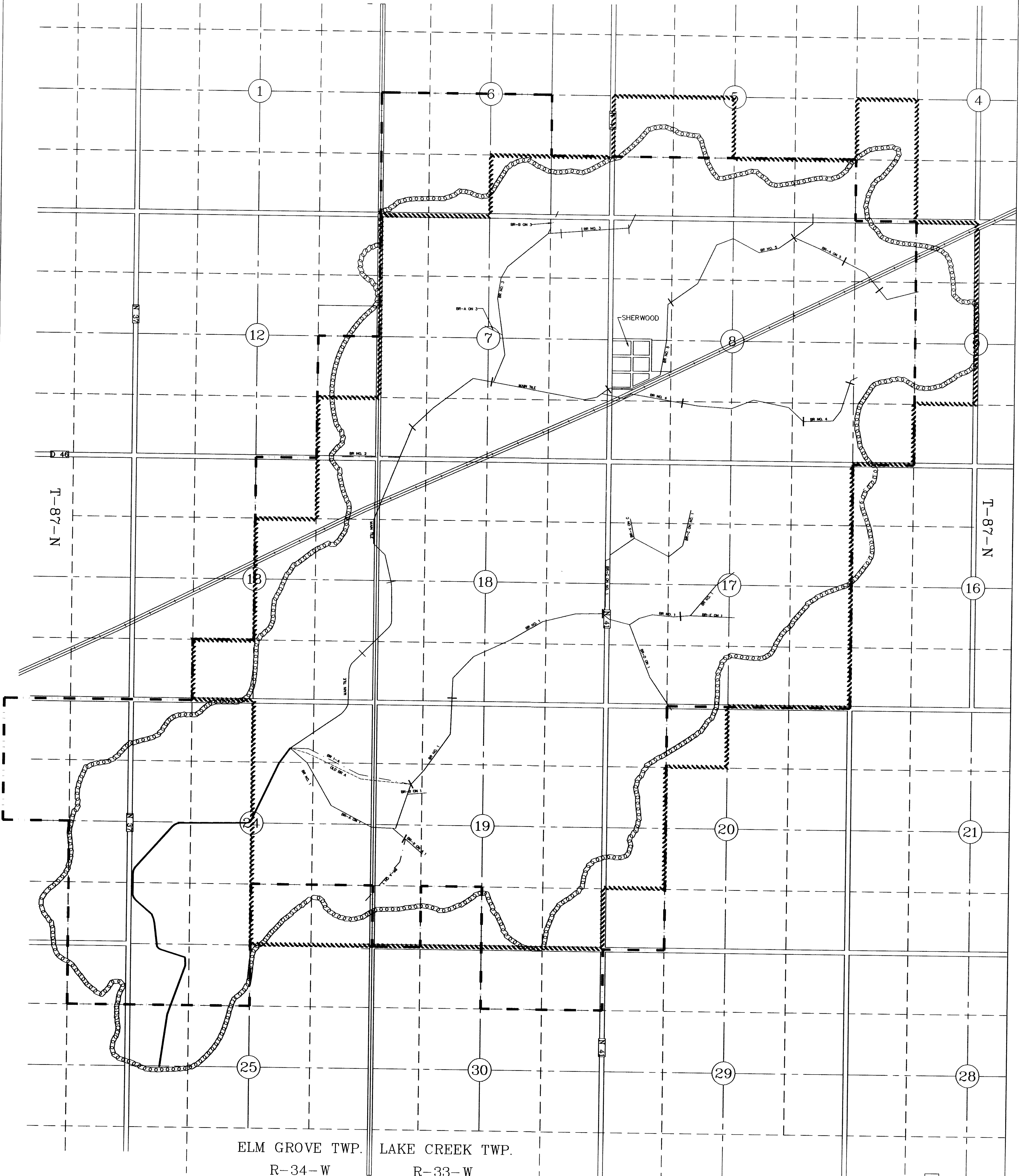


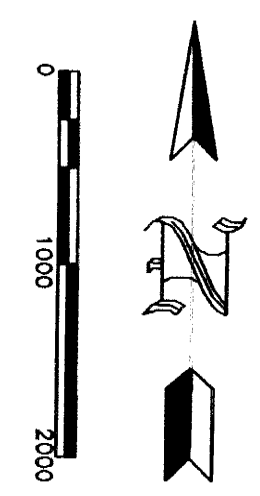
R-34-W

R-33-W



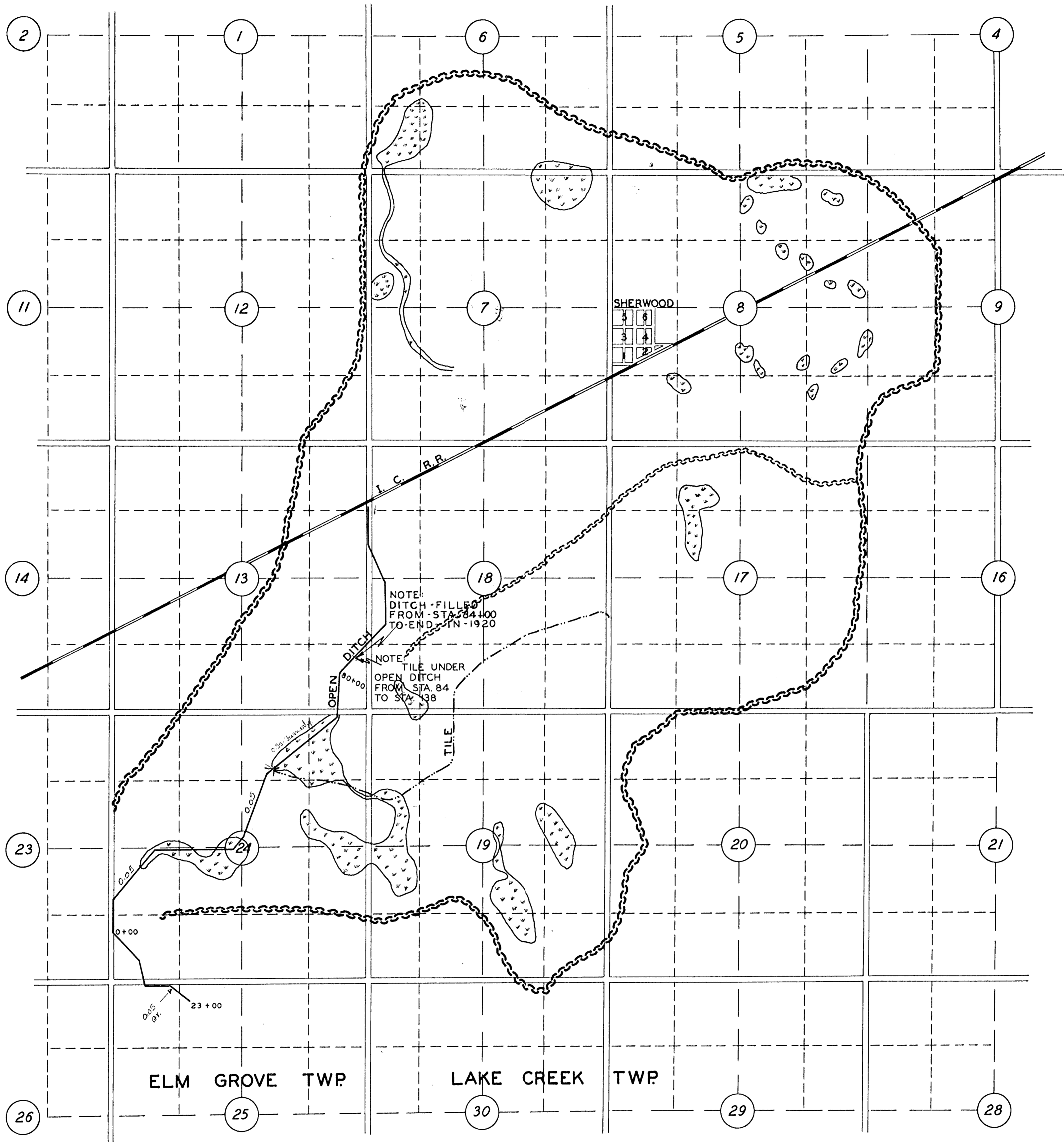
ELM GROVE TWP. LAKE CREEK TWP.  
R-34-W R-33-W

RECLASSIFICATION PLAT  
DRAINAGE DISTRICT NO. 48  
CALHOUN COUNTY, IOWA  
1996




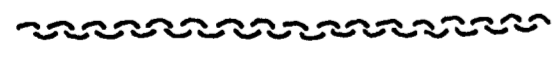
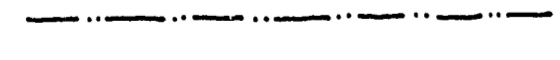

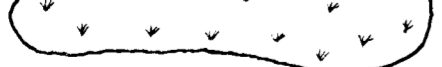
- LEGEND**
- WATERSHED BOUNDARY
  - ..... 1906 ASSESSMENT BOUNDARY
  - ~~~~~ 1920 ASSESSMENT BOUNDARY
  - DISTRICT TILE MAINS
  - QUARTER LINE
  - QUARTER - QUARTER LINE
  - DISTRICT MAIN OPEN DITCH
  - LAND AREAS TO BE ANNEXED

<p>CONSULTING ENGINEERS 1725 NORTH LAKE AVE. STORM LAKE, IOWA 50588 712-732-7745</p>	<p>Design By: <u>LD.D.</u> Drawn By: <u>MEI/BAM</u> Checked By: <u>LD.D.</u> Date: <u>SEPT 17, 1996</u> Proj. No. <u>96610</u></p>
	<p>Project: <u>D.D. NO. 48</u> Dwg. No. <u>1</u> of <u>1</u></p>



PLAT OF  
DRAINAGE DISTRICT  
NO. 48  
CALHOUN COUNTY  
IOWA

LEGEND

-  WATERSHED BOUNDARY
-  INTERIOR BOUNDARY
-  TILE
-  OPEN DITCH
-  POND

DRAWN 1906 BY W. E. MCCLURE ENGR.  
REDRAWN 1956 BY W. C. OTTO ENGR. CO.



SCALE 1"=1200'