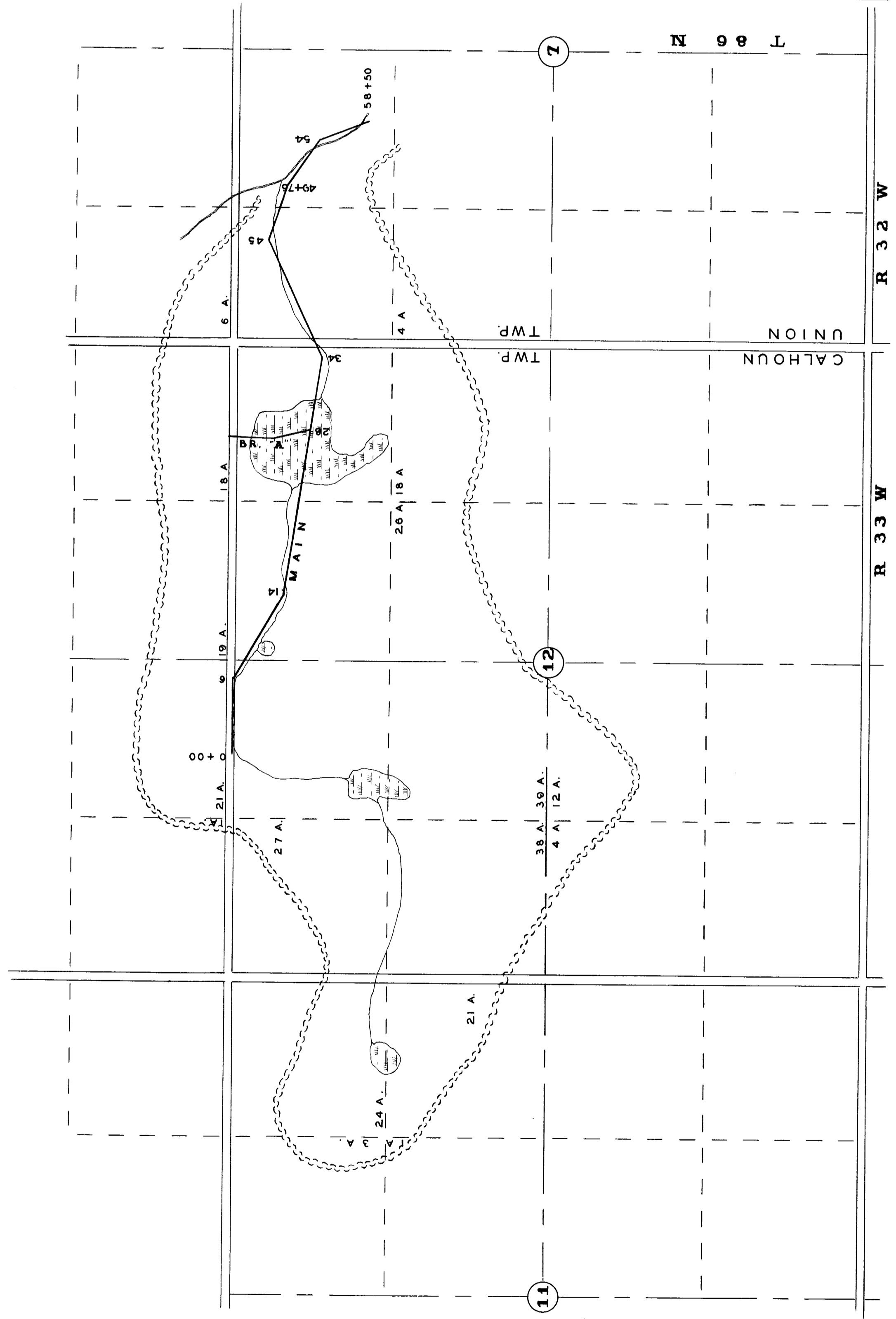


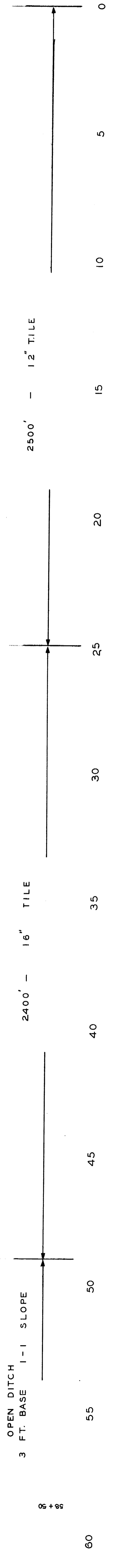
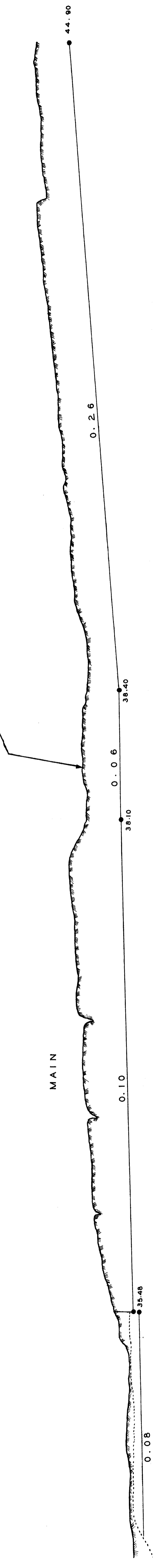
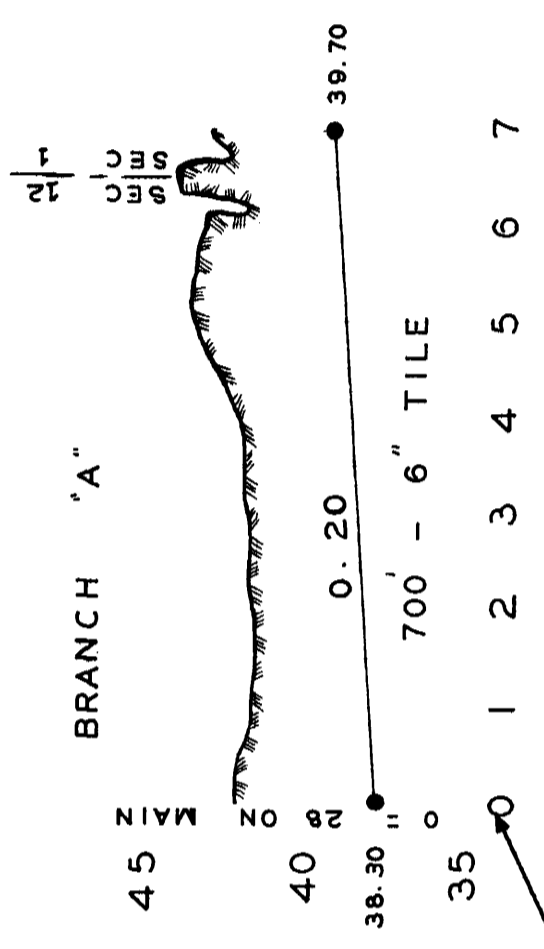
LEGEND

	1/4 SECTION LINE
	COUNTY ROADS
	WATERSHED BOUNDARY
	1/4 1/4 SECTION LINE
	TILE LINE
	NATURAL WATERWAY
	SWAMP

PLAT AND PROFILE FOR DRAINAGE DISTRICT NO 63
 CALHOUN COUNTY IOWA
 A. O. ANDERSON (ENGR.) LAKE CITY, IOWA JAN. 9-1907
 REDRAWN BY W. C. OTTO ENGINEERING CO. - SAC CITY IOWA - JANUARY 19 1954



S
C
A
L
E
500 FT.



55

45

35

25

60