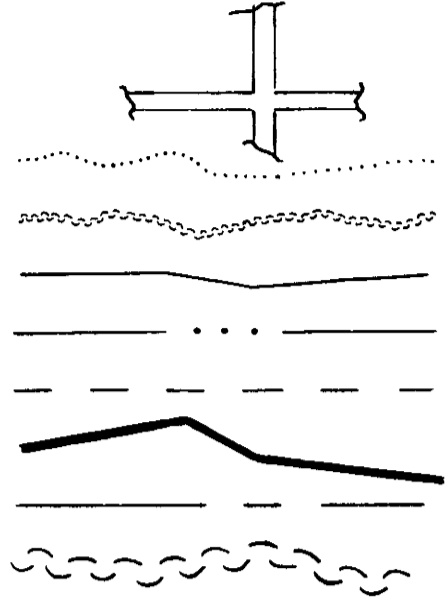
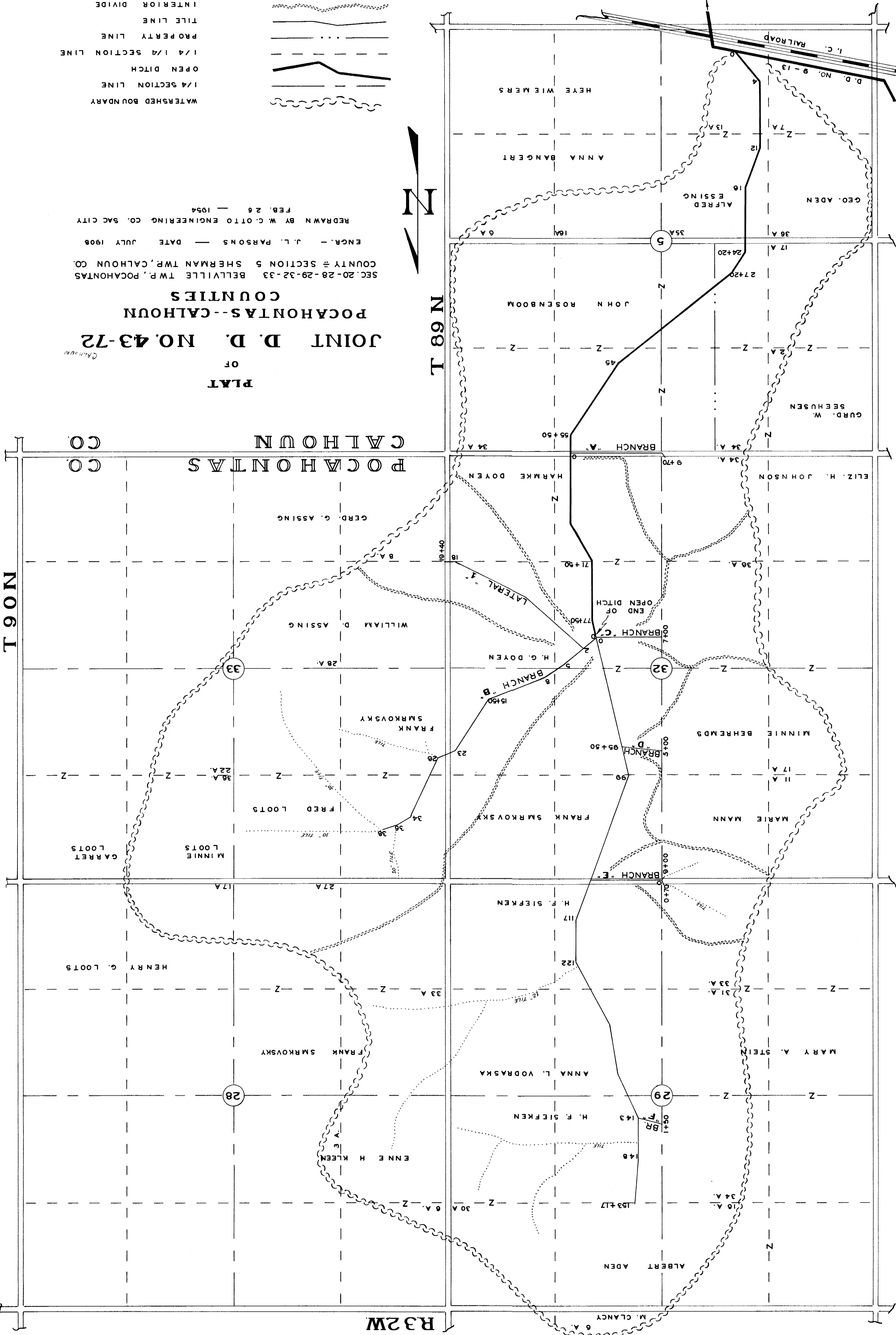
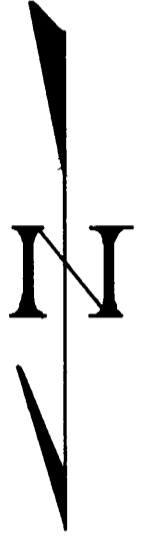


WATERSHED BOUNDARY
 1/4 SECTION LINE
 OPEN DITCH
 1/4 SECTION LINE
 PROPERTY LINE
 TILE LINE
 INTERIOR DIVIDE
 ORIGINAL TILE IN PLACE
 COUNTY ROAD



PLAT
 OF
JOINT D. D. NO. 43-72
POCAHONTAS--CALHOUN
COUNTIES
 COUNTY # SECTION 5 SHERMAN TWP, CALHOUN CO.
 ENGR. - J. L. PARSONS - DATE JULY 1908
 REDRAWN BY W. C. OTTO ENGINEERING CO. SAC CITY
 FEB. 26 - 1954



T 90 N

T 89 N

R 32 W

POCAHONTAS CO. CALHOUN CO.