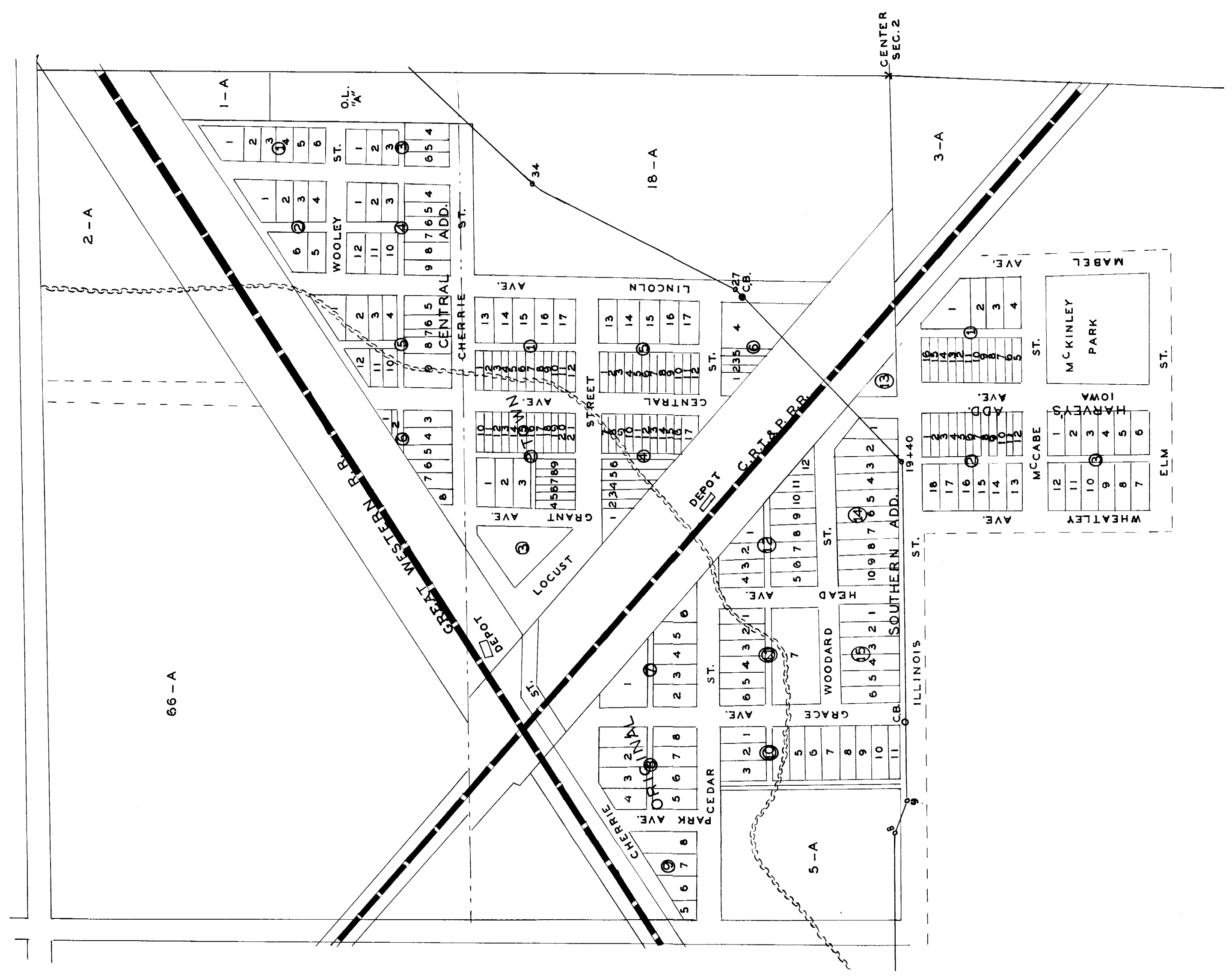
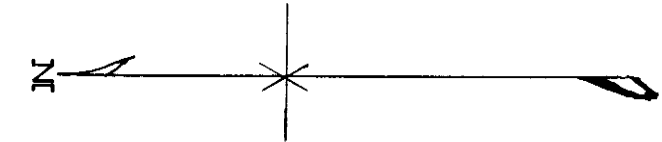
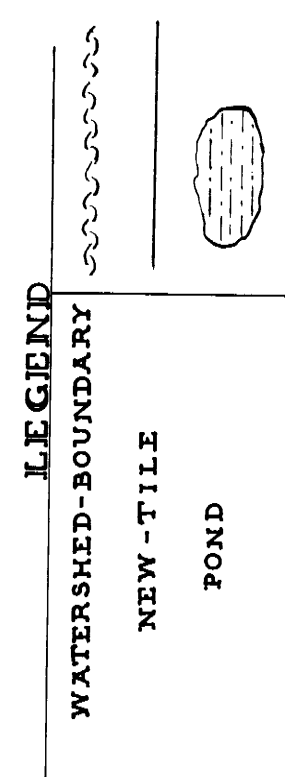


**DRAINAGE-DISTRICT**

**NO. 75**  
**CALHOUN-COUNTY**  
**GREENFIELD-TWP.**  
**T-86-N. - R-31-W.**  
**SEC. - 34, 35, 36.**  
**CEDAR-TWP.**  
**T-87-N. - R-31-W.**  
**SEC. - 1, 2, 3.**

REDDAWN - W.C. OTTO - ENGR. CO.  
 SACS CITY, IOWA  
 SCALE - 1" = 600'  
 MARCH - 1934  
 J.I. PARSONS - ENGINEER  
 OCTOBER - 1907



**PLAT**  
**OF**  
**TOWN-SOMERS**  
**SCALE - 1" = 250'**