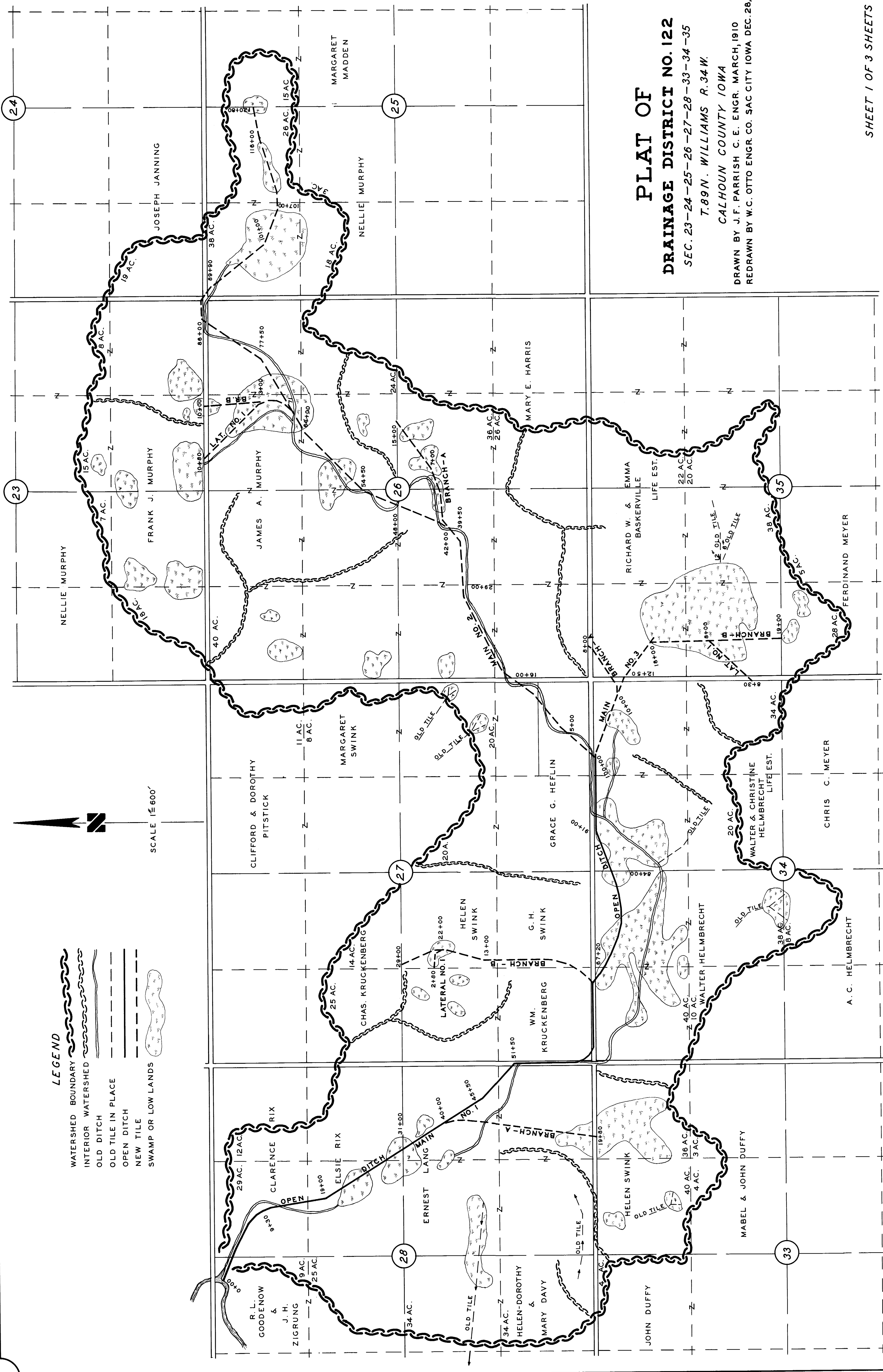


LEGEND

- WATERSHED BOUNDARY
- INTERIOR WATERSHED
- OLD DITCH
- OLD TILE IN PLACE
- OPEN DITCH
- NEW TILE
- SWAMP OR LOW LANDS

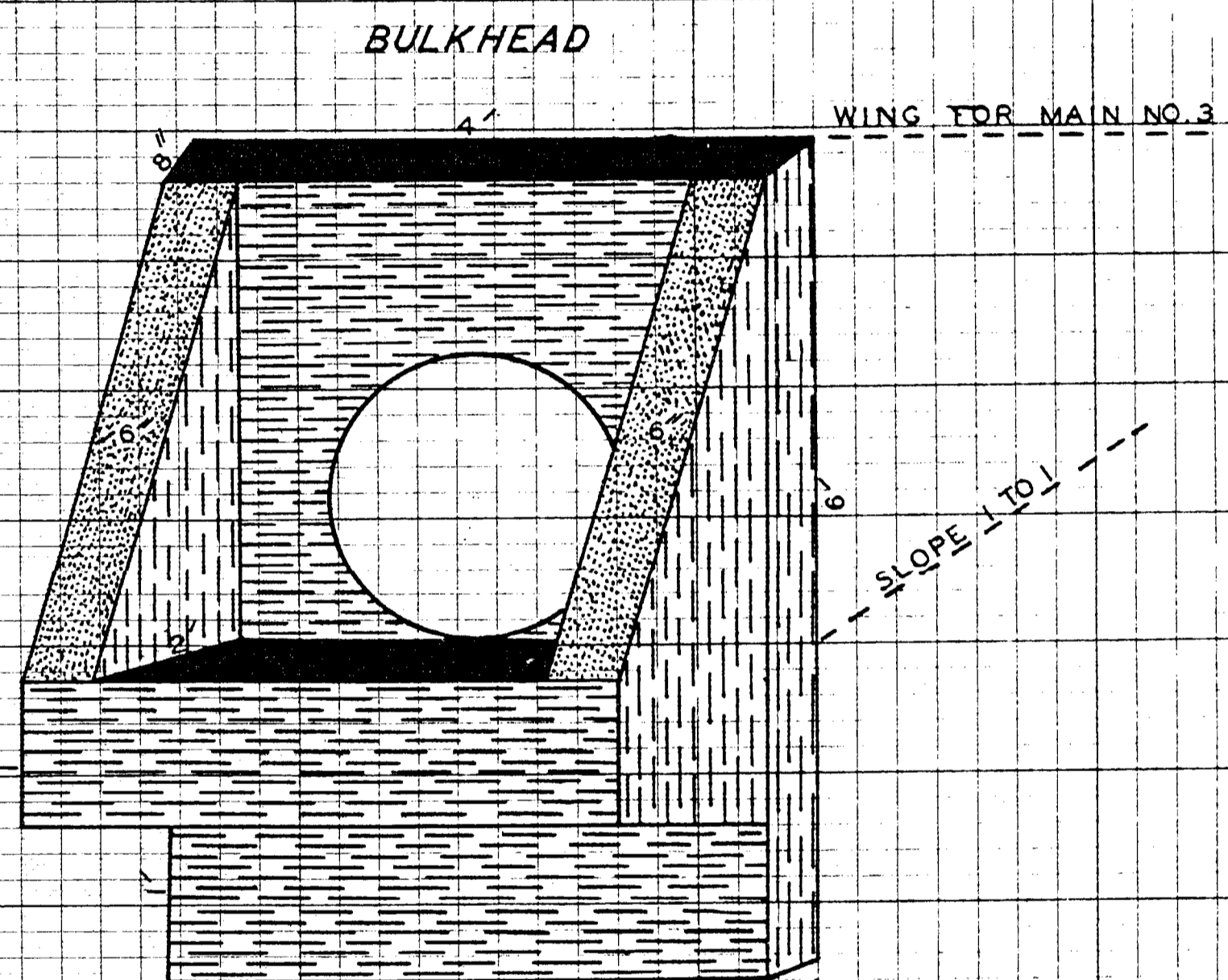


SCALE 1" = 600'



**PLAT OF
DRAINAGE DISTRICT NO. 122**
SEC. 23-24-25-26-27-28-33-34-35
T. 89 N. WILLIAMS R. 34 W.
CALHOUN COUNTY IOWA
DRAWN BY J.F. PARRISH C. E. ENGR. MARCH, 1910
REDRAWN BY W.C. OTTO ENGR. CO. SAC CITY IOWA DEC. 28, 1955

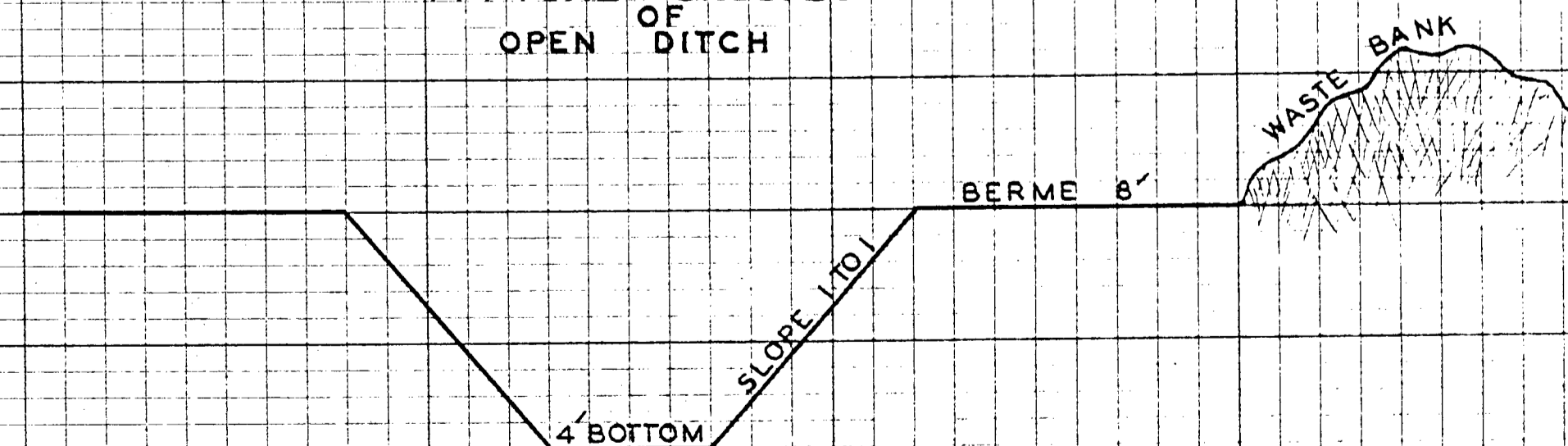
1000
SCALE
1000



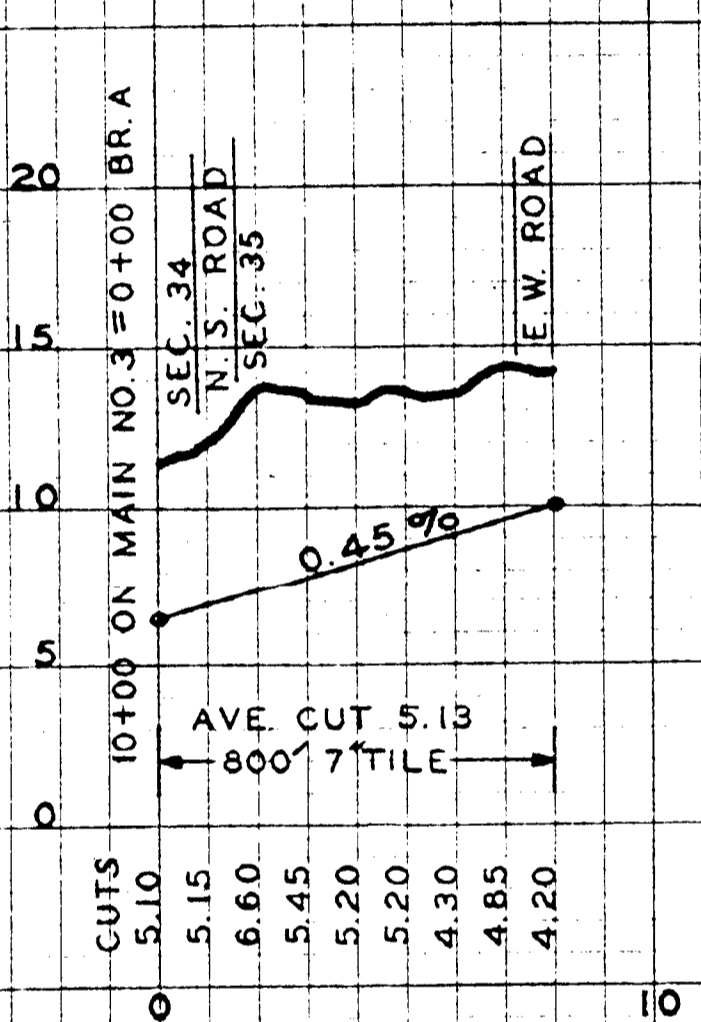
TYPE OF BULKHEAD FOR BR. A & B OF MAIN NO. 1
1 FT. HIGHER 6 IN. WIDER FOR MAIN NO. 2
WING EACH SIDE AS PER DOTTED LINES BUT NO WINGS IN FRONT FOR MAIN NO. 3

- MAIN NO. 1 2 BULKHEADS
- MAIN NO. 2 1 BULKHEAD
- MAIN NO. 3 1 BULKHEAD

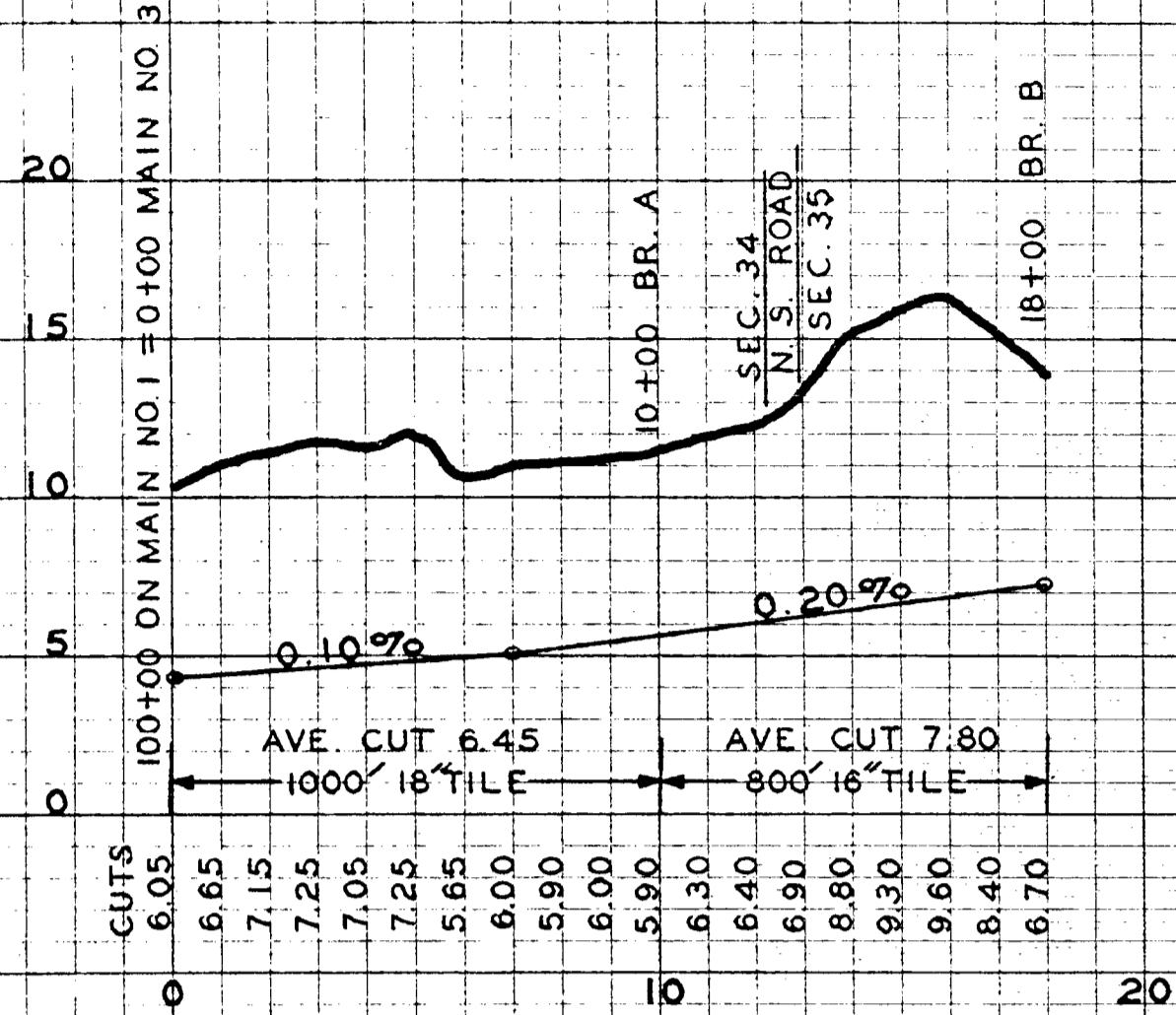
TYPICAL CROSSSECTION
OF
OPEN DITCH



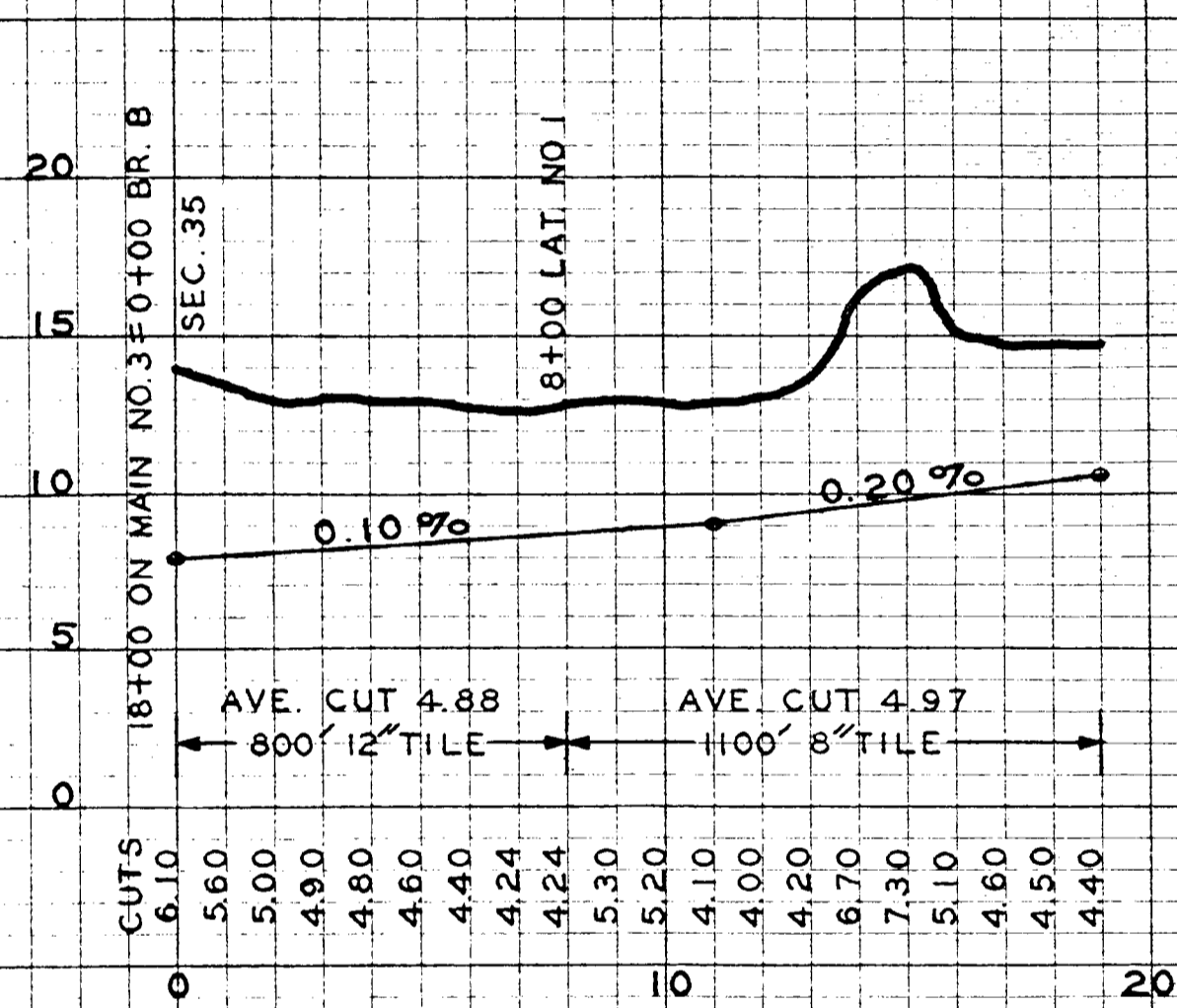
BRANCH A
OF MAIN NO. 3



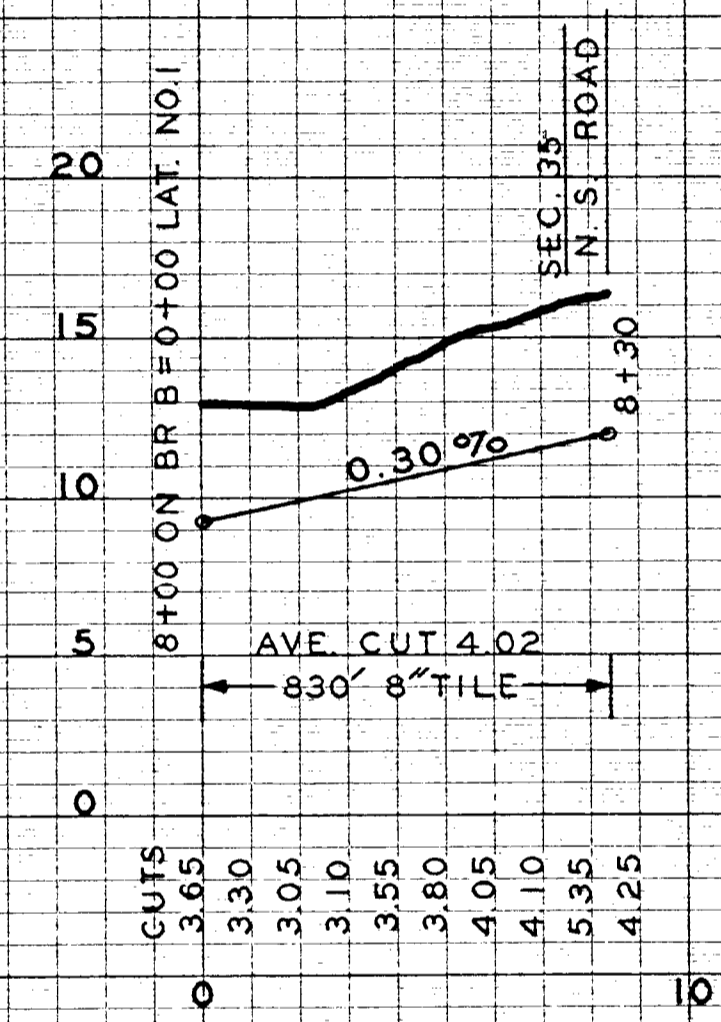
MAIN NO. 3
OF MAIN NO. 1



BRANCH B
OF MAIN NO. 3



LATERAL NO. 1
OFF BR. B OF MAIN NO. 3



PLAT OF DRAINAGE DISTRICT NO. 122 SEC. 23-24-25-26-27-28-33-34-35 T.89 N. WILLIAMS R. 34 W.

DRAWN BY J. F. PARRISH C. E. ENGR. MARCH 1910
REDRAWN BY W. C. OTTO ENGR. CO. SAC CITY, IOWA. DEC. 28, 1955