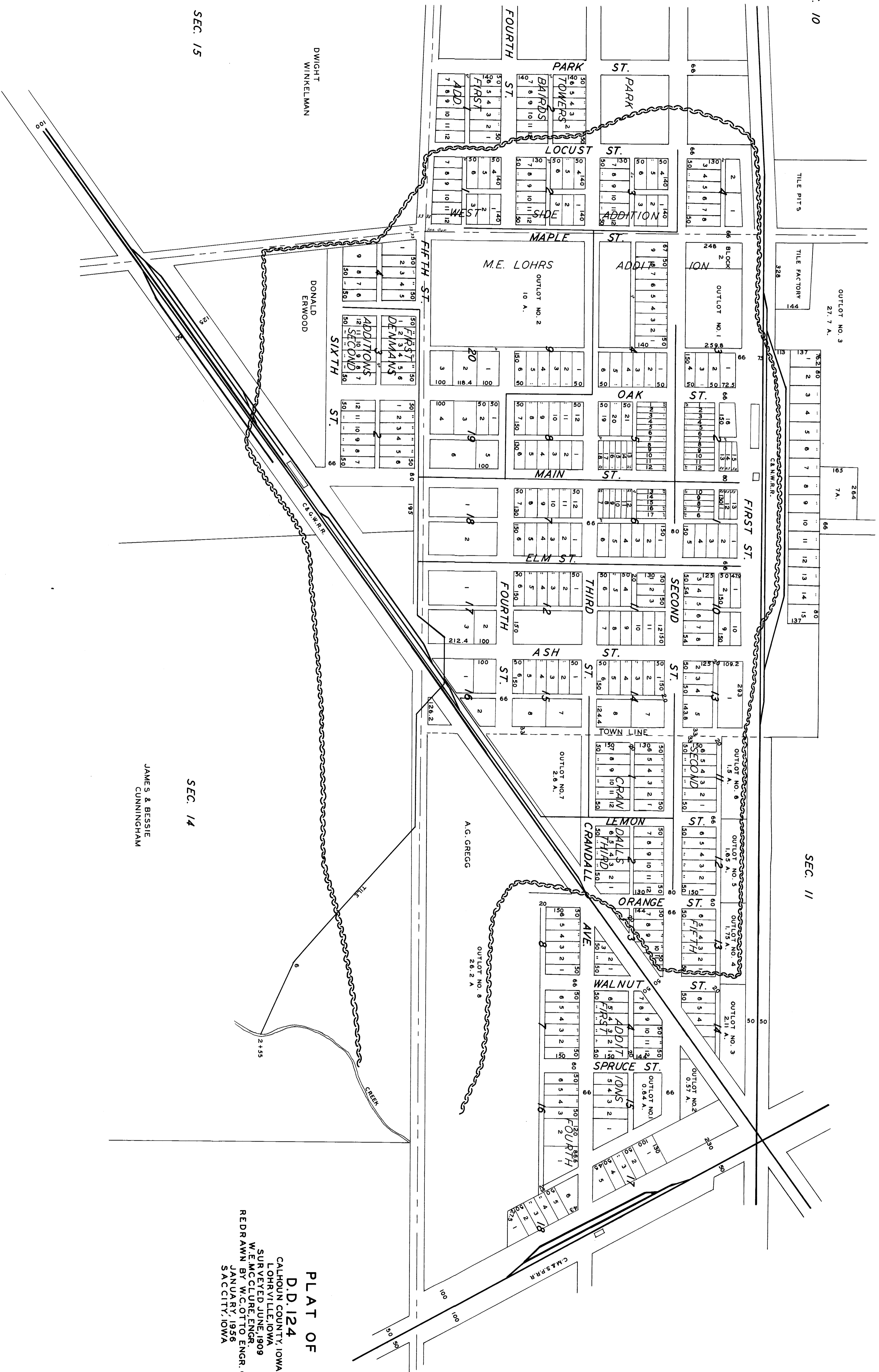


SEC. 10

SEC. 11

SEC. 15

SEC. 14



DWIGHT WINKELMAN

DONALD ERWOOD

JAMES & BESSIE CUNNINGHAM

PLAT OF
 D.D. 124
 CALHOUN COUNTY, IOWA
 LOHRYVILLE, IOWA
 SURVEYED JUNE, 1909
 W.E. McCURE, ENGR.
 REDRAWN BY W.C. OTTO ENGR. CO.
 JANUARY, 1956
 SACCITY, IOWA