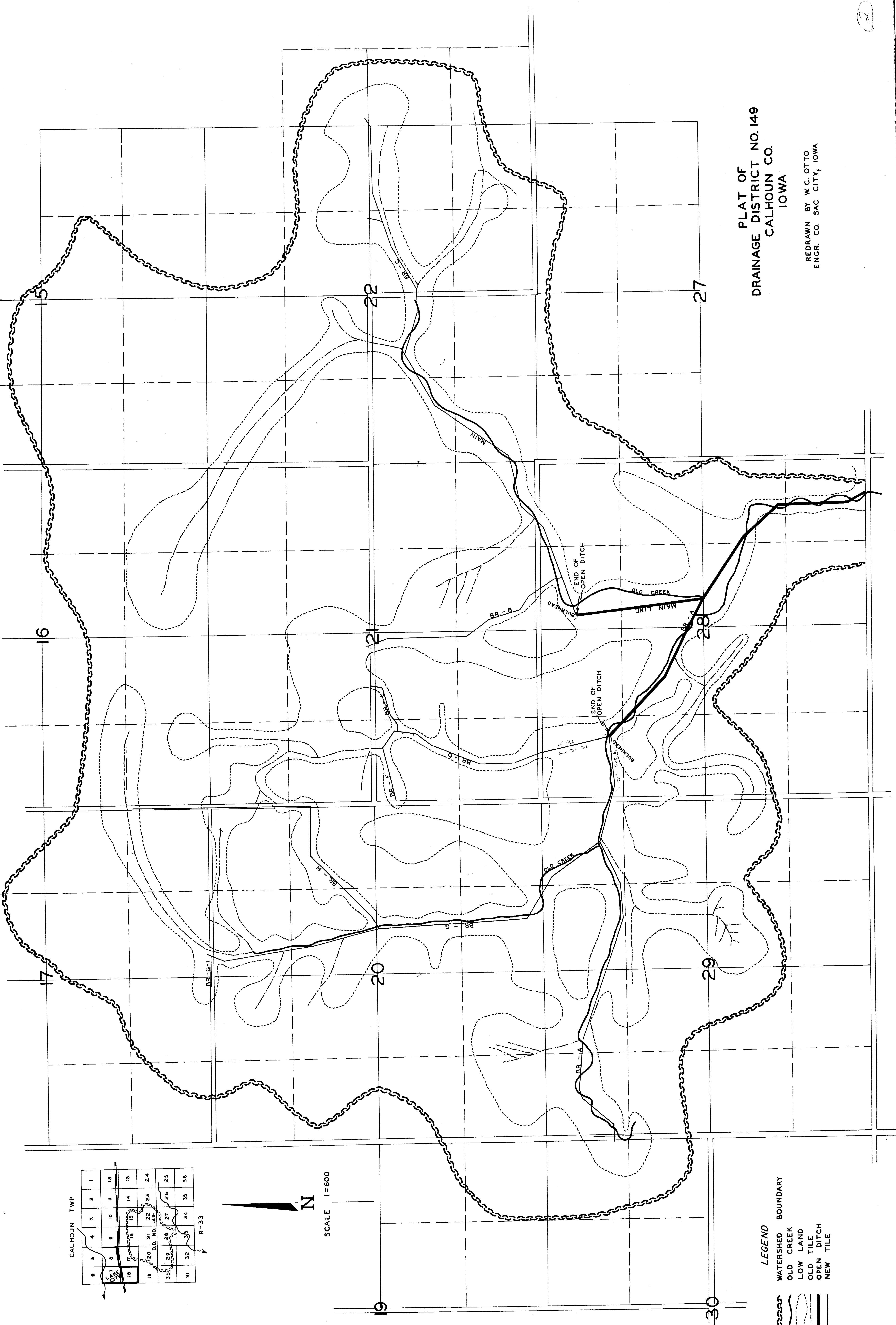


PLAT OF  
DRAINAGE DISTRICT NO. 149  
CALHOUN CO.  
IOWA

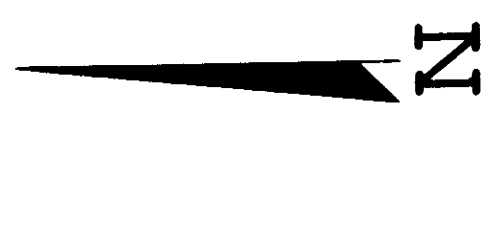
REDRAWN BY W.C. OTTO  
ENGR. CO. SAC CITY, IOWA



CALHOUN TWP

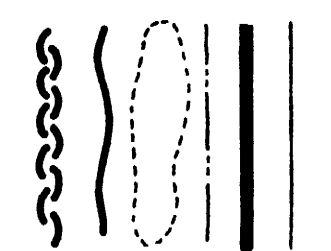
6	5	4	3	2	1
7	8	9	10	11	12
13	14	15	16	17	18
19	20	21	22	23	24
25	26	27	28	29	30
31	32	33	34	35	36

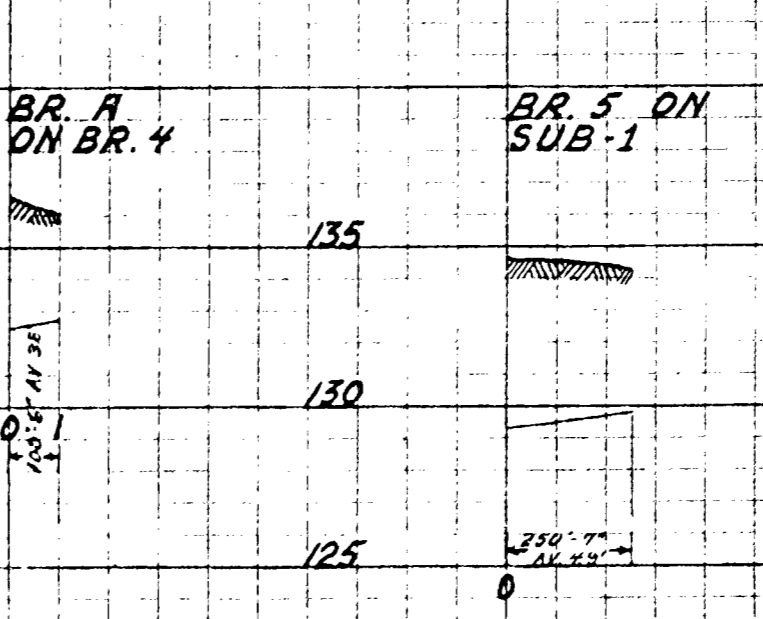
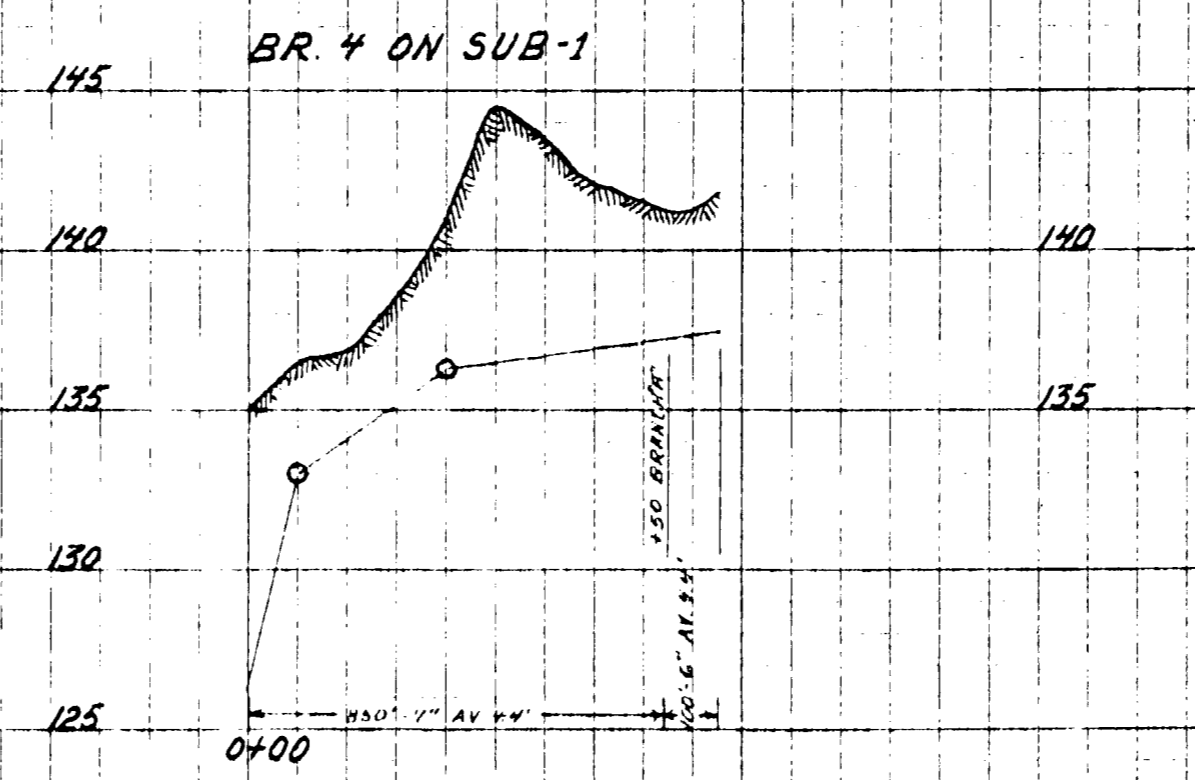
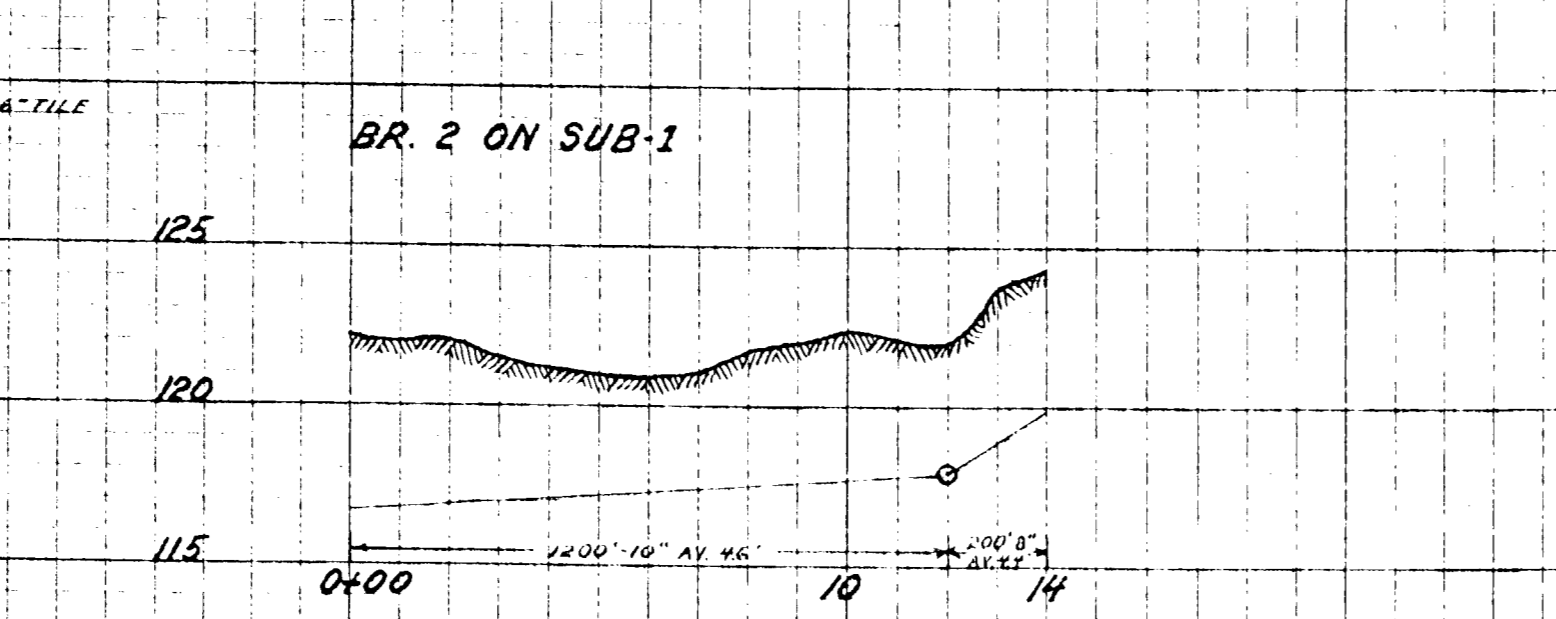
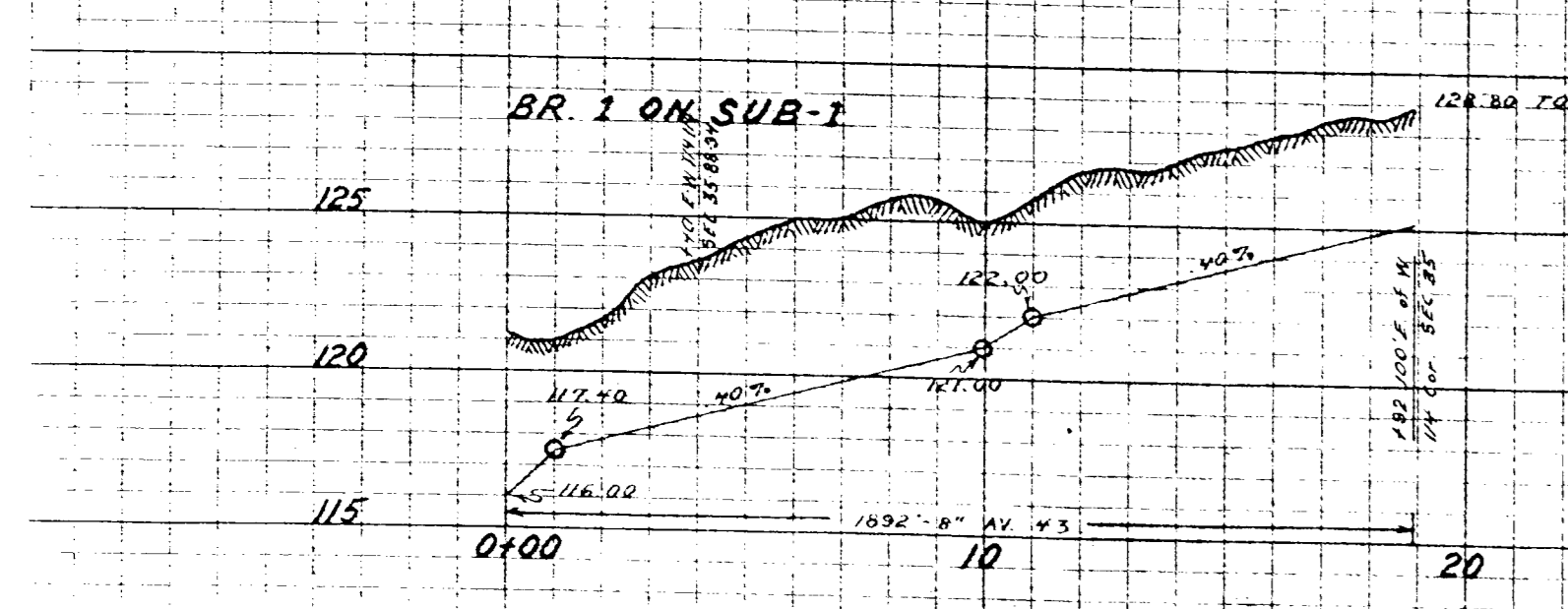
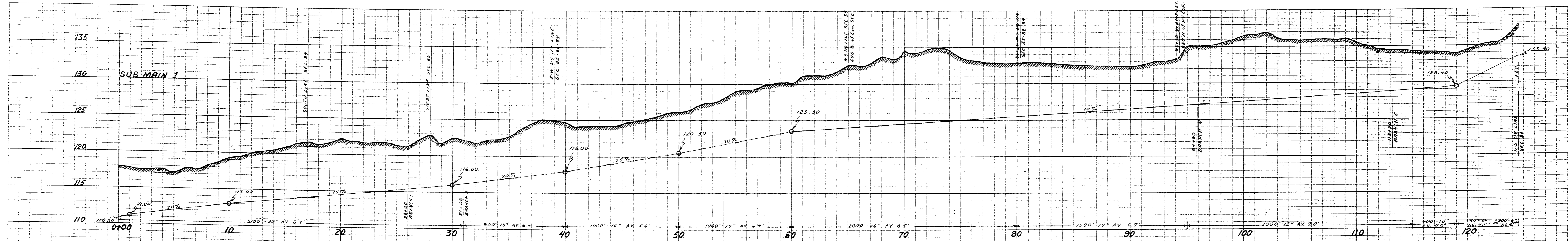
R-33



SCALE 1"=600

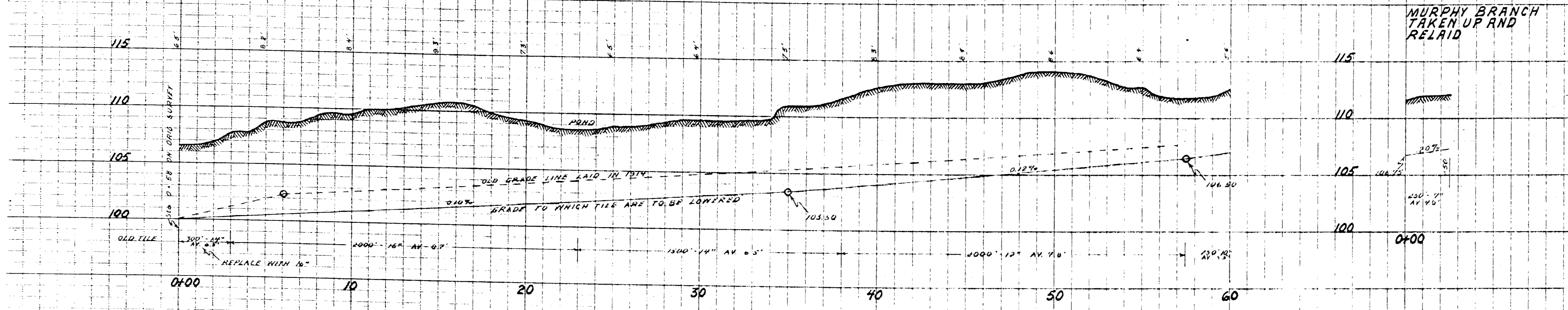
- LEGEND
- WATERSHED BOUNDARY
  - OLD CREEK
  - LOW LAND
  - OLD TILE
  - OPEN DITCH
  - NEW TILE





NOTE: SHEET 1 OF ORIG. PROFILE SHOWING MAIN TILE LINE MISSING FROM COURT HOUSE FILES.

PROFILE OF UPPER PART OF SUB-MAIN TILE TAKEN UP AND RELAID 11-29-19 J.P. MOORE, ENGR.



PLAT  
OF  
**DRAINAGE DISTRICT No 149**  
**CALHOUN COUNTY, IOWA**  
J. A. MOELLER  
JULY 1914  
**REDRAWN**  
MARCH 1956  
BY  
**W.C. DITTO ENGR. CO.**  
SAC CITY, IOWA