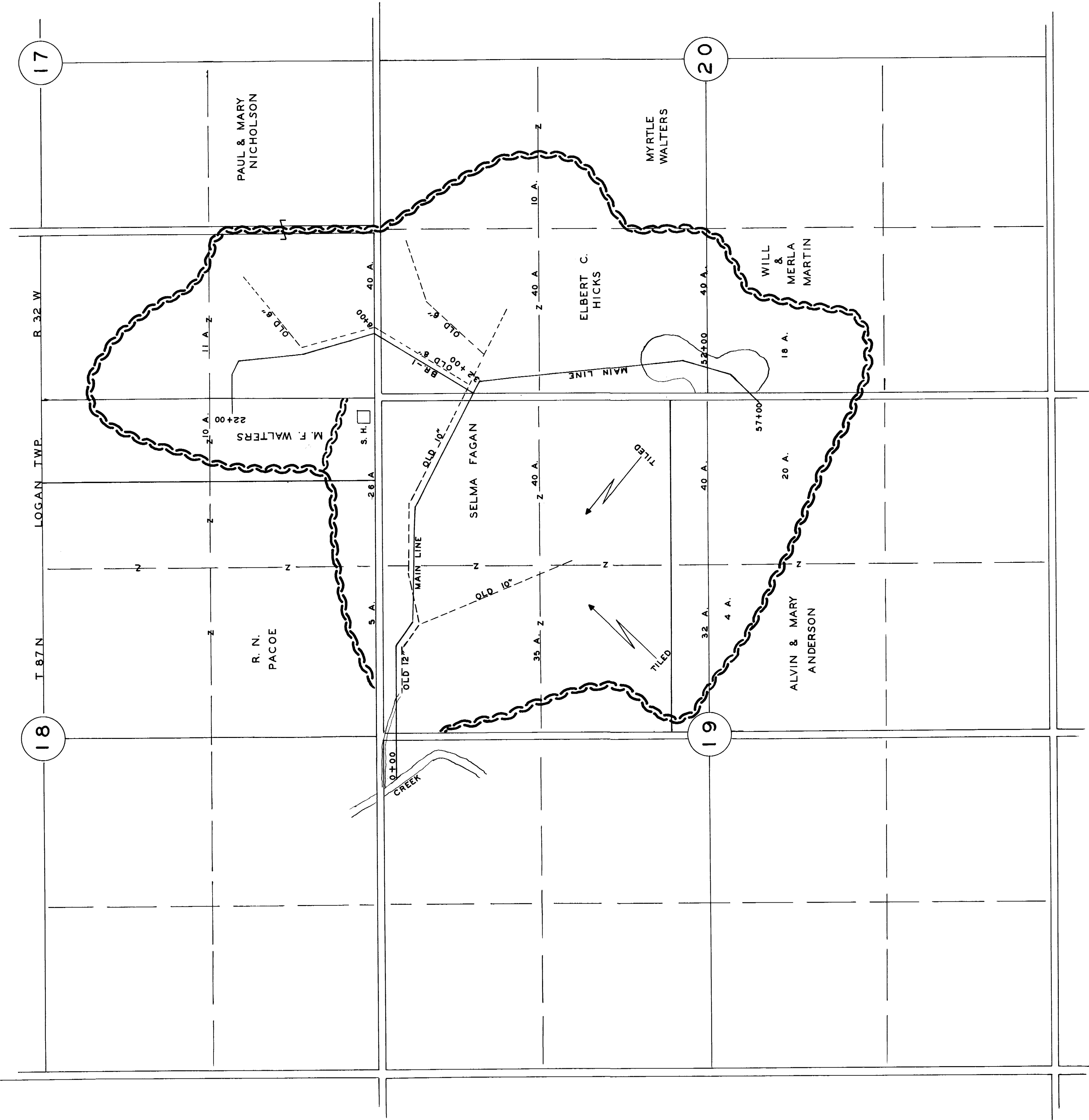


PLAT
OF
DRAINAGE DISTRICT
NO. 153
CALHOUN COUNTY
IOWA

DRAWN SEPT. 1910 BY J. P. MOORE ENGR.
REDRAWN JAN. 1956 BY W. C. OTTO ENGR. CO.



STA.	TILE SIZES
0+00 - 8+00	16"
8+00 - 32+00	14"
32+00 - 49+00	10"
49+00 - 57+00	8"
57+00 - 62+00	8"
62+00 - 72+00	10"