

# PLAT:

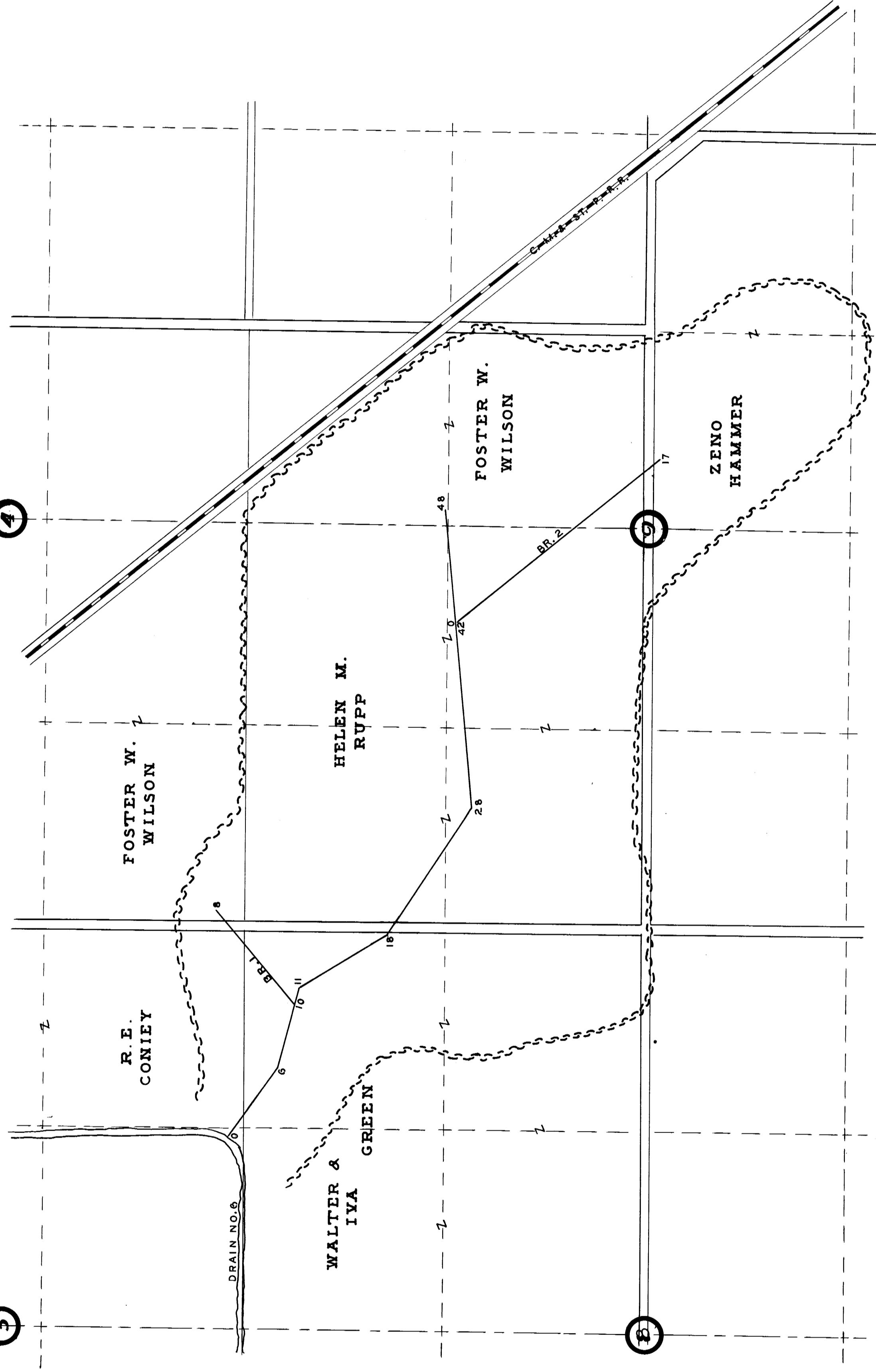
OF  
 DRAINAGE DISTRICT  
 NO. 162  
 CALHOUN COUNTY  
 TWIN-LAKES TOWNSHIP  
 T-88-N. R-33-W.  
 SECTION 4, 5, 8, 9.  
 SCALE 1" = 500'

DRAWN BY  
 W.E. McCURE  
 1911  
 RE-DRAWN BY  
 W. C. OTTO-ENGR. CO.  
 SAC, CALHOUN, GA.  
 1956



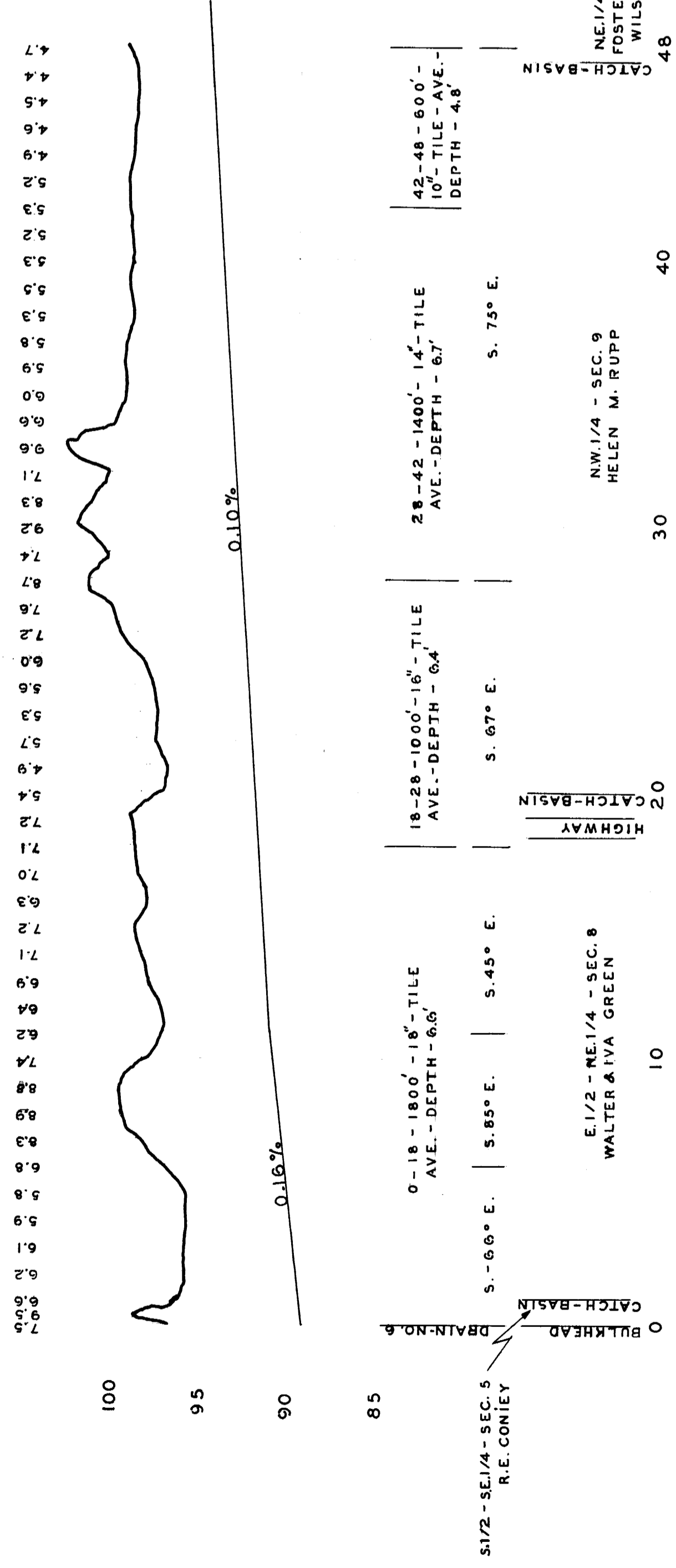
## LEGEND

- WATER-SHED-BOUNDARY
- PROPOSED-TILE
- DRAINAGE-DITCH
- ROAD
- RAILROAD
- 1/2-SECTION LINE
- 1/4-SECTION LINE

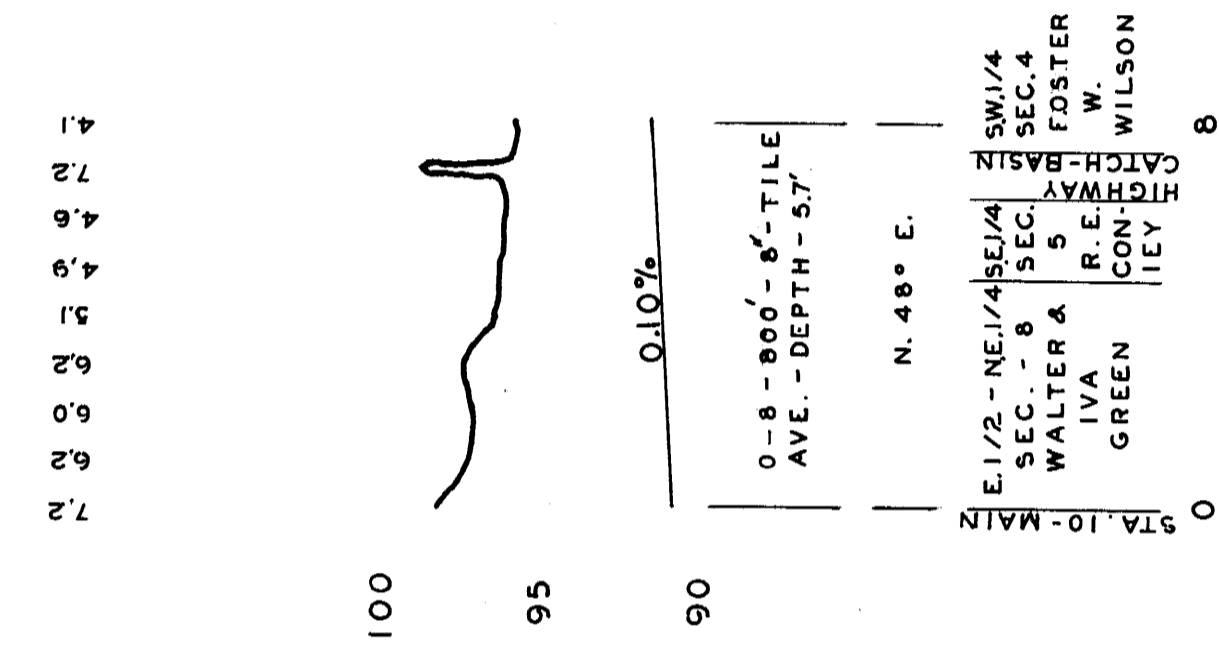


# PROFILE

## MAIN



## BRANCH #1



## BRANCH #2

