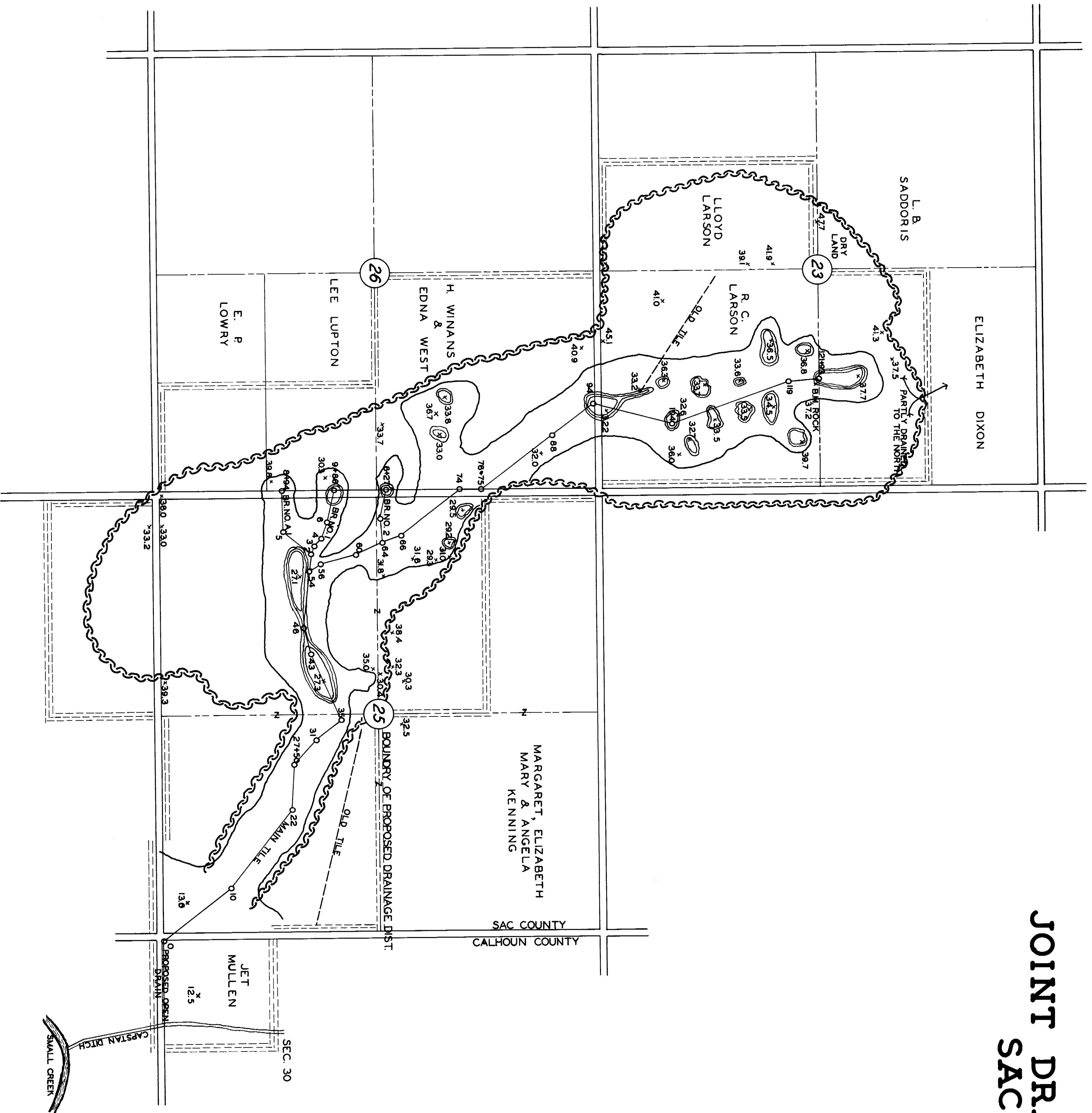


PLAT OF
 JOINT DRAINAGE DISTRICT NO. 172
 SAC & CALHOUN CO.
 IOWA

DRAWN 1912 BY L. M. RUDE ENGR.
 REDRAWN 1956 BY W. C. OTTO ENGR. CO.



SCALE
 1" = 800'

- LEGEND**
- PROPOSED TILE
 - - - OLD TILE
 - ~~~~~ WATERSHED BOUNDARY
 - ⊖ SWAMPS OR PONDS
 - ⊖ WET LAND