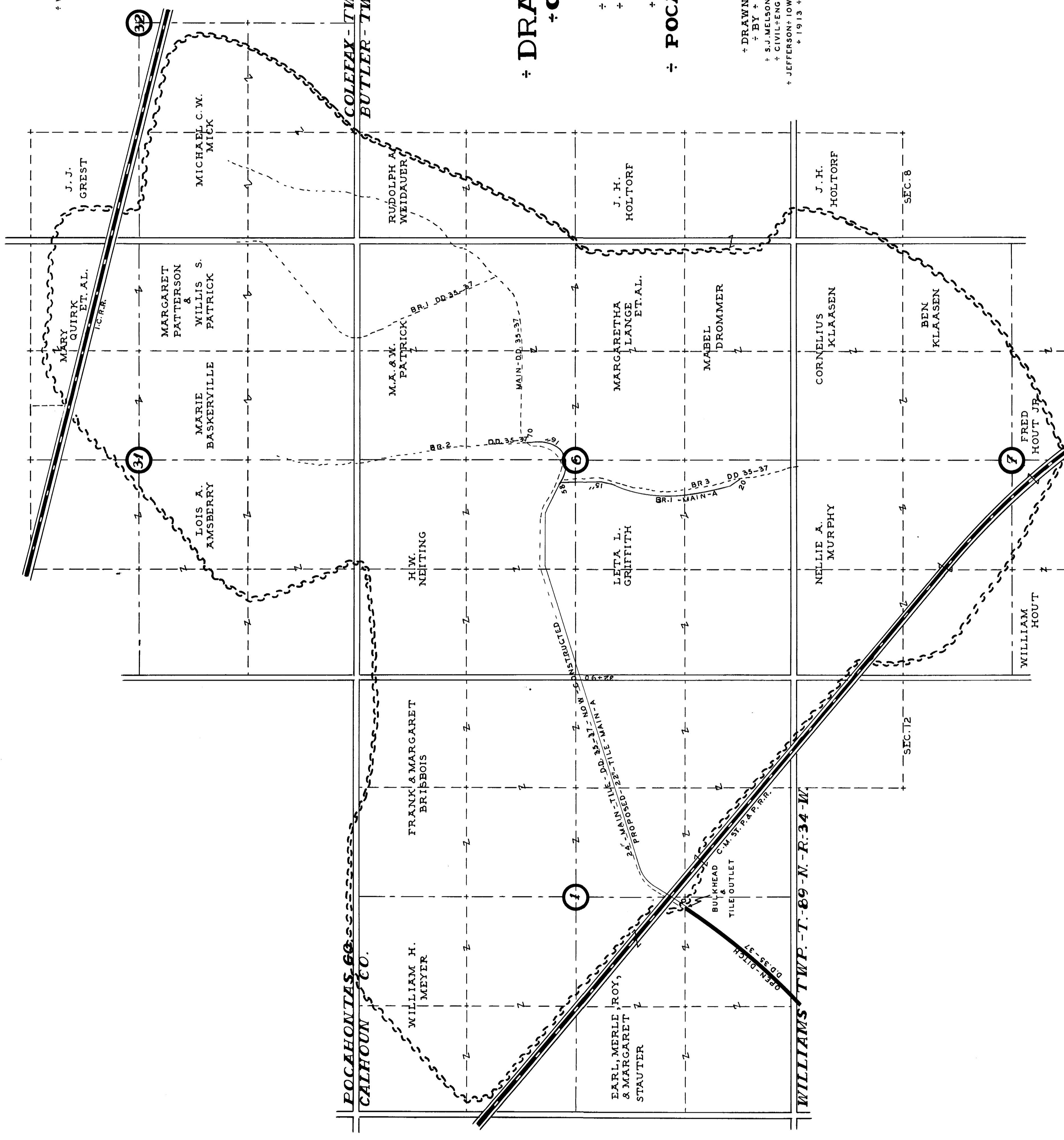


÷ **LEGEND** ÷

- + WATER-SHED-BOUNDARY +
- + PROPOSED-TILE +
- + PRESENT-TILE +
- + OPEN-DITCH +
- + 1/4-SECTION-LINE +
- + 1/2-SECTION-LINE +
- + HIGHWAY +
- + RAILROAD +



POCAHONTAS CO.
CALHOUN TWP. - T. 89-N. - R. 33-W.
BUTLER TWP. - T. 89-N. - R. 33-W.

÷ **PLAT** ÷

+ OF +

÷ **JOINT** ÷

÷ **DRAINAGE DISTRICT** ÷

÷ **CALHOUN COUNTY NO. 173** ÷

+ BUTLER TOWNSHIP +

+ T. 89-N. - R. 33-W. +

+ SECTIONS 5, 6, 7, 8. +

+ WILLIAMS TOWNSHIP +

+ T. 89-N. - R. 34-W. +

+ SECTION 1, 12. +

÷ **POCAHONTAS COUNTY NO. 67** ÷

+ COLEFAX TOWNSHIP +

+ T. 90-N. - R. 33-W. +

+ SECTION 31, 32. +

+ SCALE 1" = 660' +

+ REDRAWN +

+ BY +

+ S. J. MELSON +

+ CIVIL ENGINEER +

+ JEFFERSON IOWA +

+ 1913 +

N

