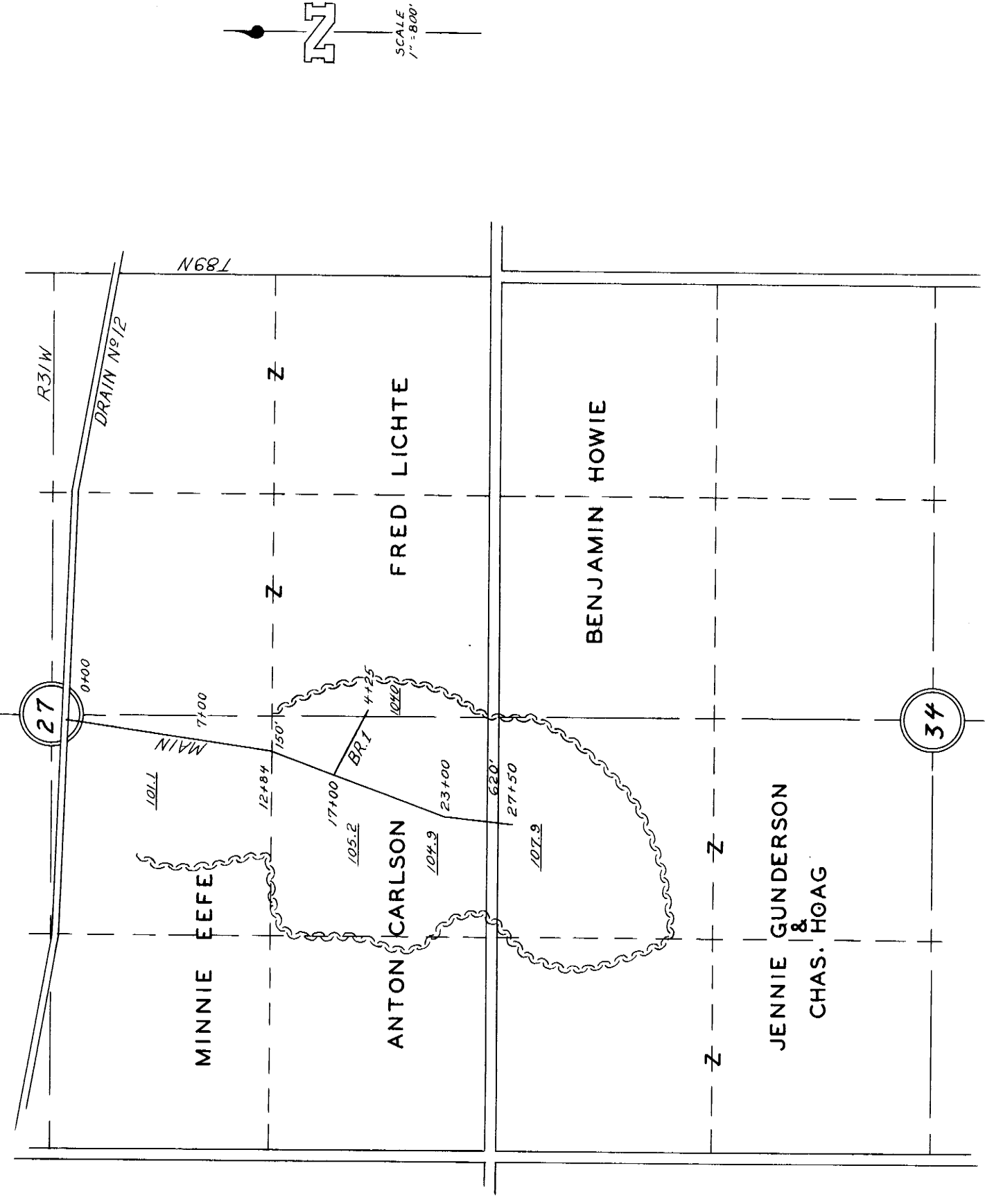
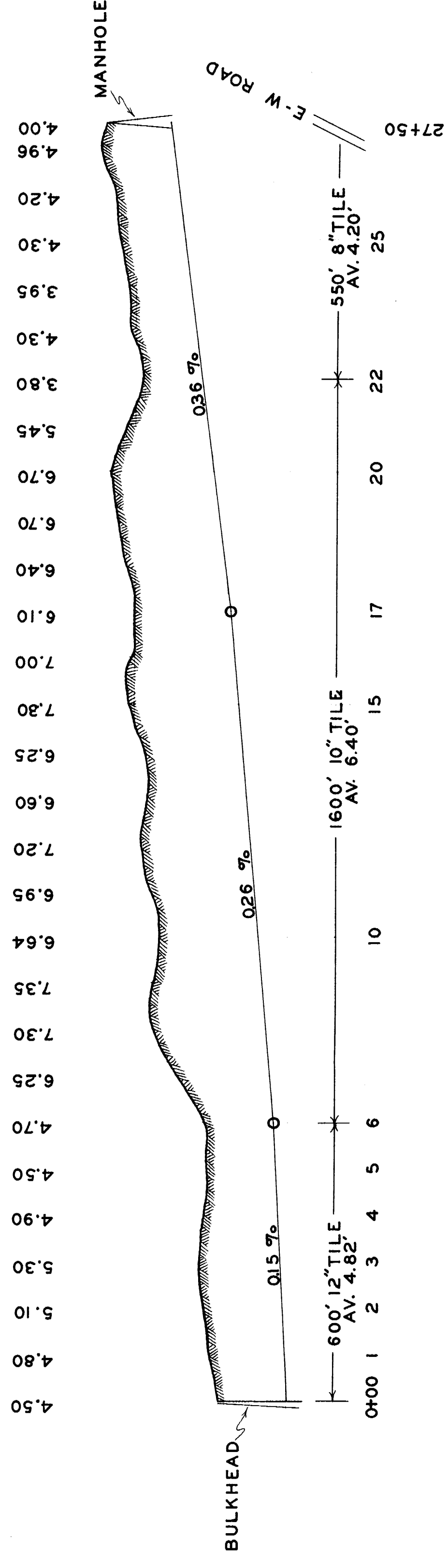


PLAT & PROFILE
D.D. NO. 185
 SECTIONS 27&36
 T.89N-R31W
 LINCOLN TWP.
CALHOUN CO., IOWA

FILED OCT. 28, 1914
 J.P. MOORE, ENGR.
 REDRAWN FEB. 1956
 W.C. OTTO ENGR. CO.
 SAC CITY, IOWA



MAIN



BR. 1

