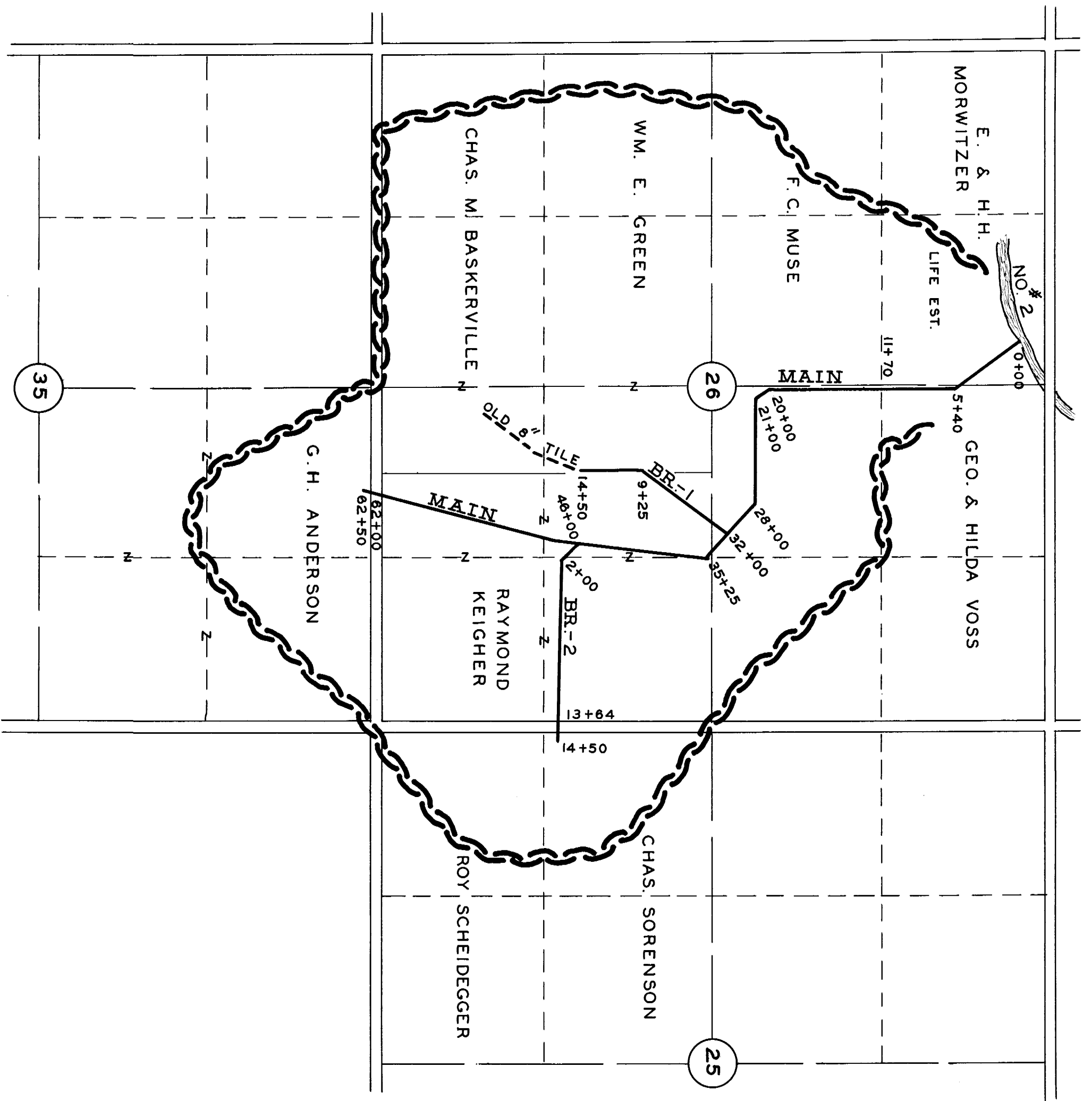


LEGEND
 WATERSHED BOUNDARY
 MAIN & BRANCHES



PLAT & PROFILE
OF

DRAINAGE DISTRICT NO. 188

CALHOUN COUNTY

SEC. 25 - 26 - 35

T. 89 N. BUTLER R. 33 N.

DRAWN BY J. P. MOORE ENGR. ----- OCT. 14, 1913
 REDRAWN BY W. C. OTTO ENGR. CO S&C CITY, IOWA FEB. 22, 1956

MAIN

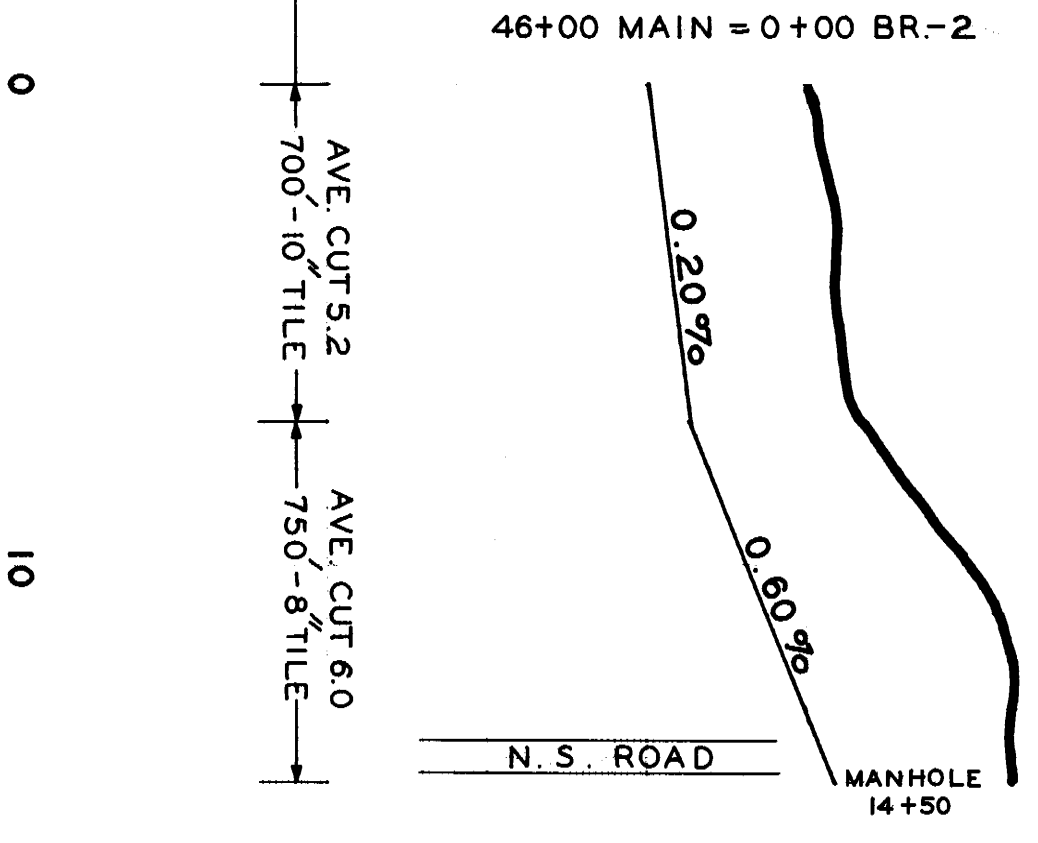
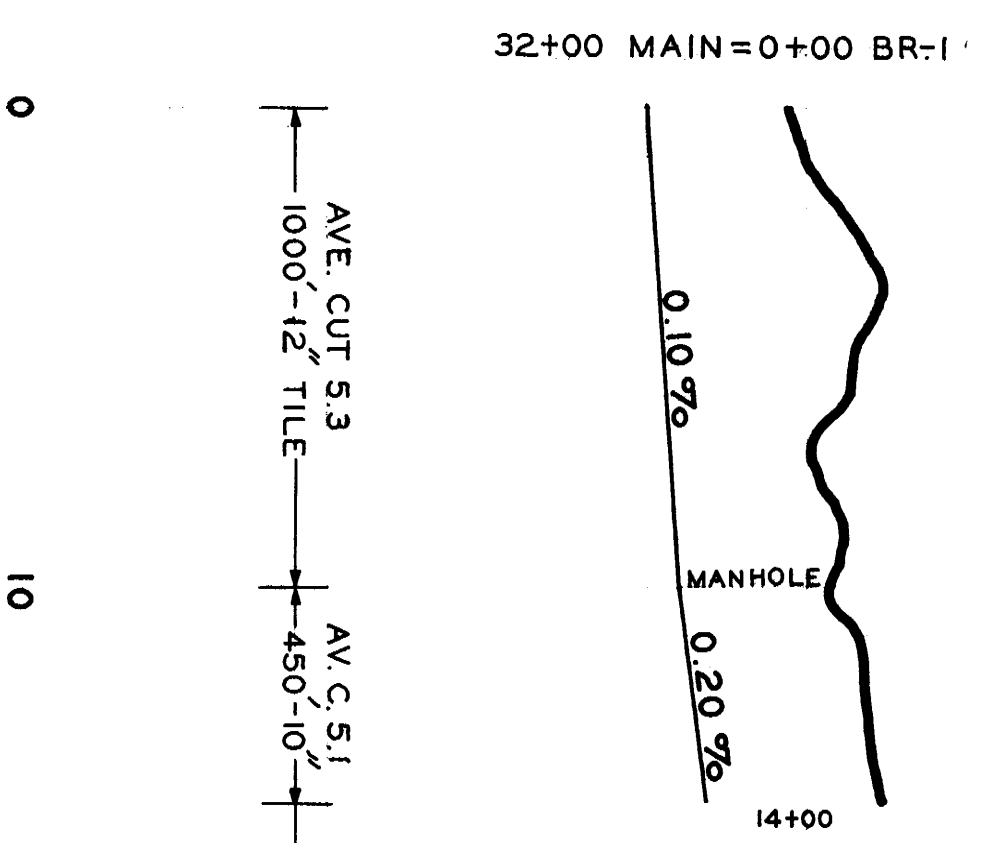
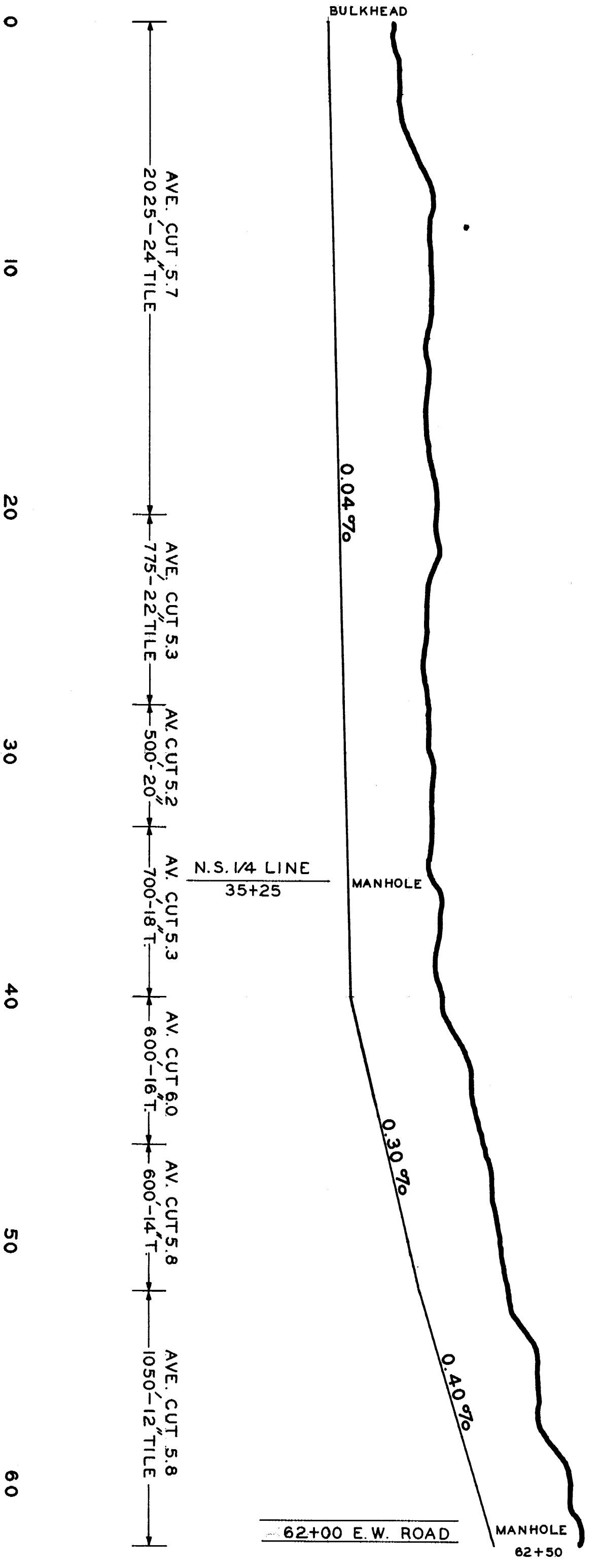
Station	CUTS
0	4.0
10	4.0
20	4.5
30	4.3
40	4.7
50	5.1
60	5.9
70	5.9
80	6.0
90	5.8
100	5.7
110	5.5
120	5.7
130	5.9
140	5.7
150	5.8
160	6.0
170	5.4
180	5.0
190	4.8
200	5.1
210	5.1
220	5.4
230	5.3
240	5.2
250	5.3
260	4.9
270	5.7
280	5.3
290	5.3
300	5.2
310	5.5
320	6.2
330	6.3
340	6.0
350	6.1
360	6.0
370	6.2
380	5.9
390	5.6
400	5.5
410	5.7
420	6.2
430	5.5
440	5.2
450	5.2
460	5.8
470	5.6
480	5.5
490	5.7
500	6.2
510	5.5
520	5.2
530	5.2
540	5.8
550	5.6
560	5.5
570	5.6
580	5.5
590	5.6
600	5.0

BRANCH - 1

Station	CUTS
0	4.6
10	4.8
20	5.6
30	5.9
40	2.1
50	6.1
60	5.5
70	4.3
80	4.6
90	5.2
100	4.7
110	5.3
120	5.3
130	5.0
140	5.2
150	5.0

BRANCH - 2

Station	CUTS
0	5.0
10	5.2
20	5.3
30	5.5
40	5.2
50	5.1
60	5.1
70	5.9
80	6.2
90	6.6
100	6.7
110	6.6
120	6.0
130	6.0
140	5.4
150	5.0



0 10 20 30 40 50 60 0 10 0 10

AVE. CUT 5.7
 2025-24 TILE

AVE. CUT 5.3
 775-22 TILE

AV. CUT 5.2
 500-20 "

AV. CUT 5.3
 700-18 "

AV. CUT 6.0
 600-16 "

AV. CUT 5.8
 600-14 "

AVE. CUT 5.8
 1050-12 TILE

AVE. CUT 5.3
 1000-12 TILE

AV. C. 5.1
 450-10 "

AVE. CUT 5.2
 700-10 TILE

AVE. CUT 6.0
 750-8 TILE