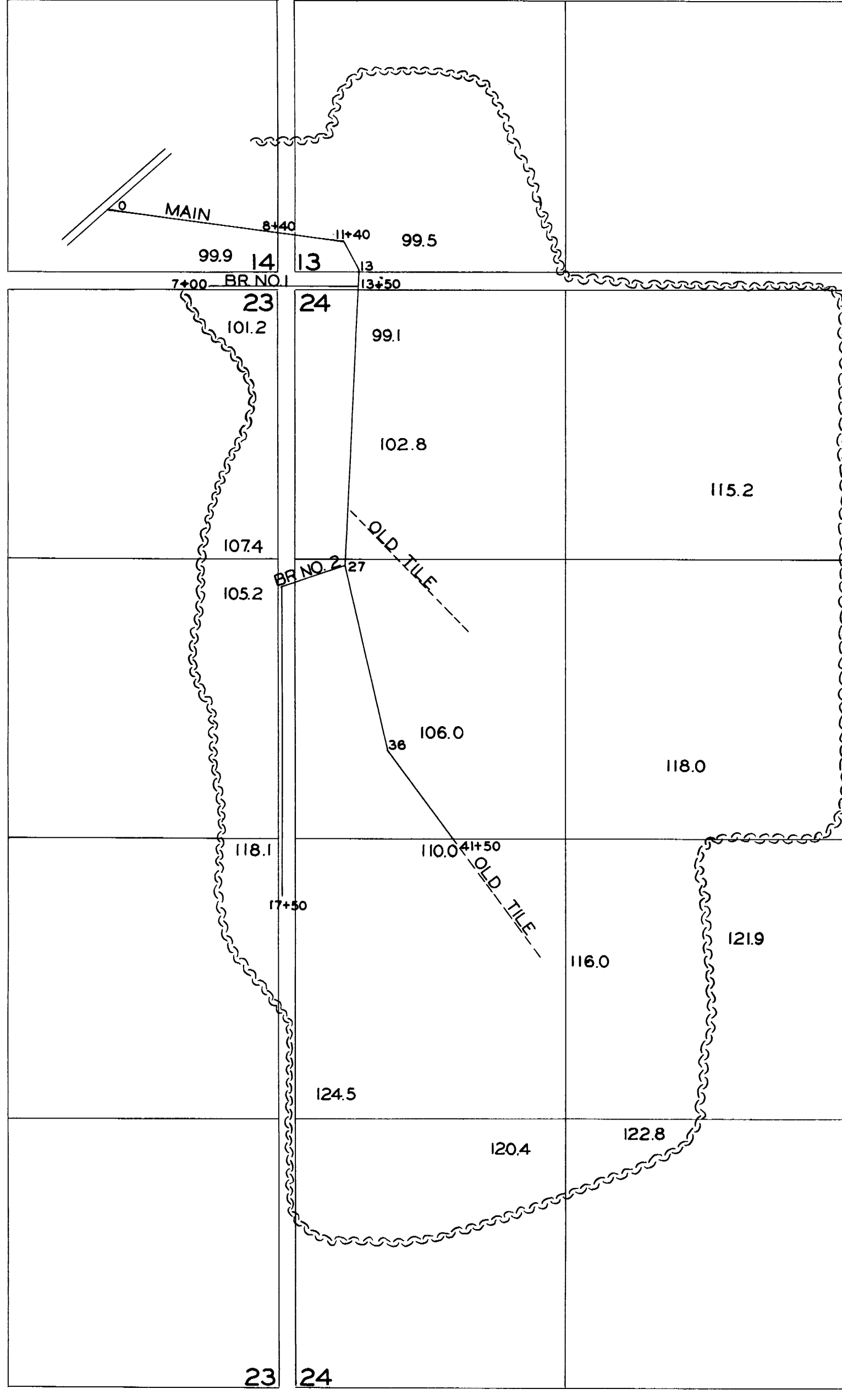


LEGEND

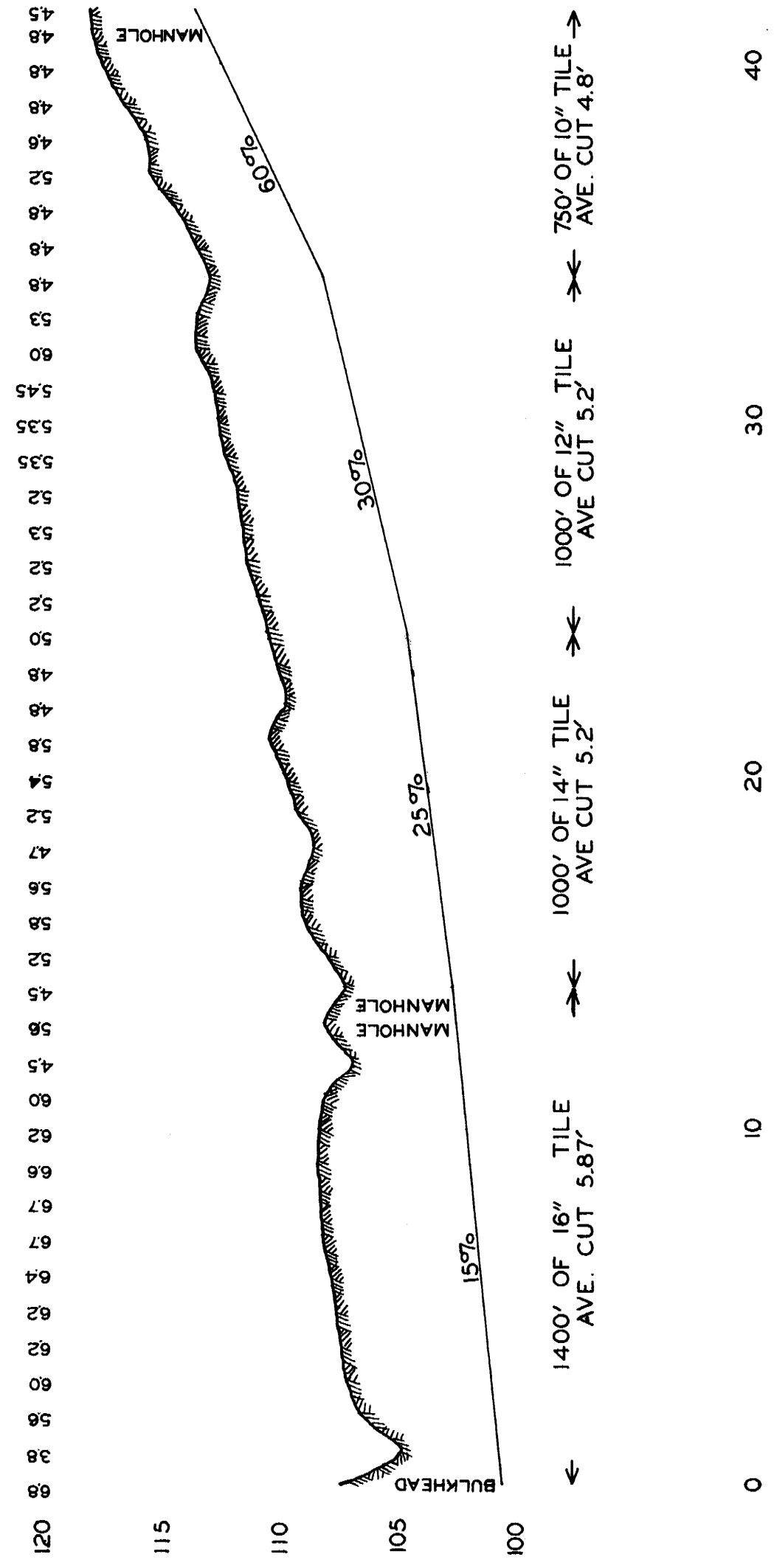
- WATERSHED BOUNDARY
- NEW TILE LINE
- OLD TILE LINE
- DRAINAGE DITCH
- ROADS



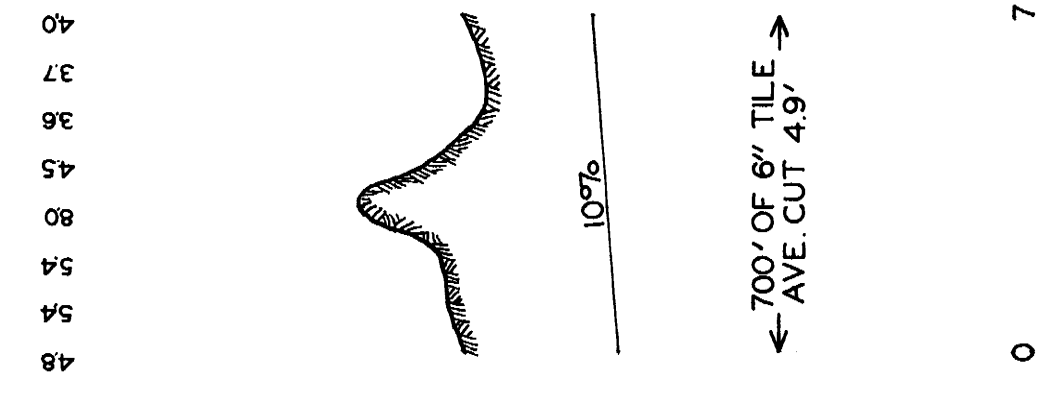
**PLAT & PROFILE
OF
DRAIN NO. 190**

CALHOUN COUNTY, IA.
SEC. 13, 14, 23, 24
T-88-N, R-31-W
J.P. MOORE, ENGR.
SURVEYED JAN. 1914
REDRAWN
BY
W.C. OTTO, ENGR.
MARCH, 1956

MAIN



BRANCH 1
STA. 0 = STA. 13+50 ON MAIN



BRANCH 2
STA. 0 = STA. 26 ON MAIN

