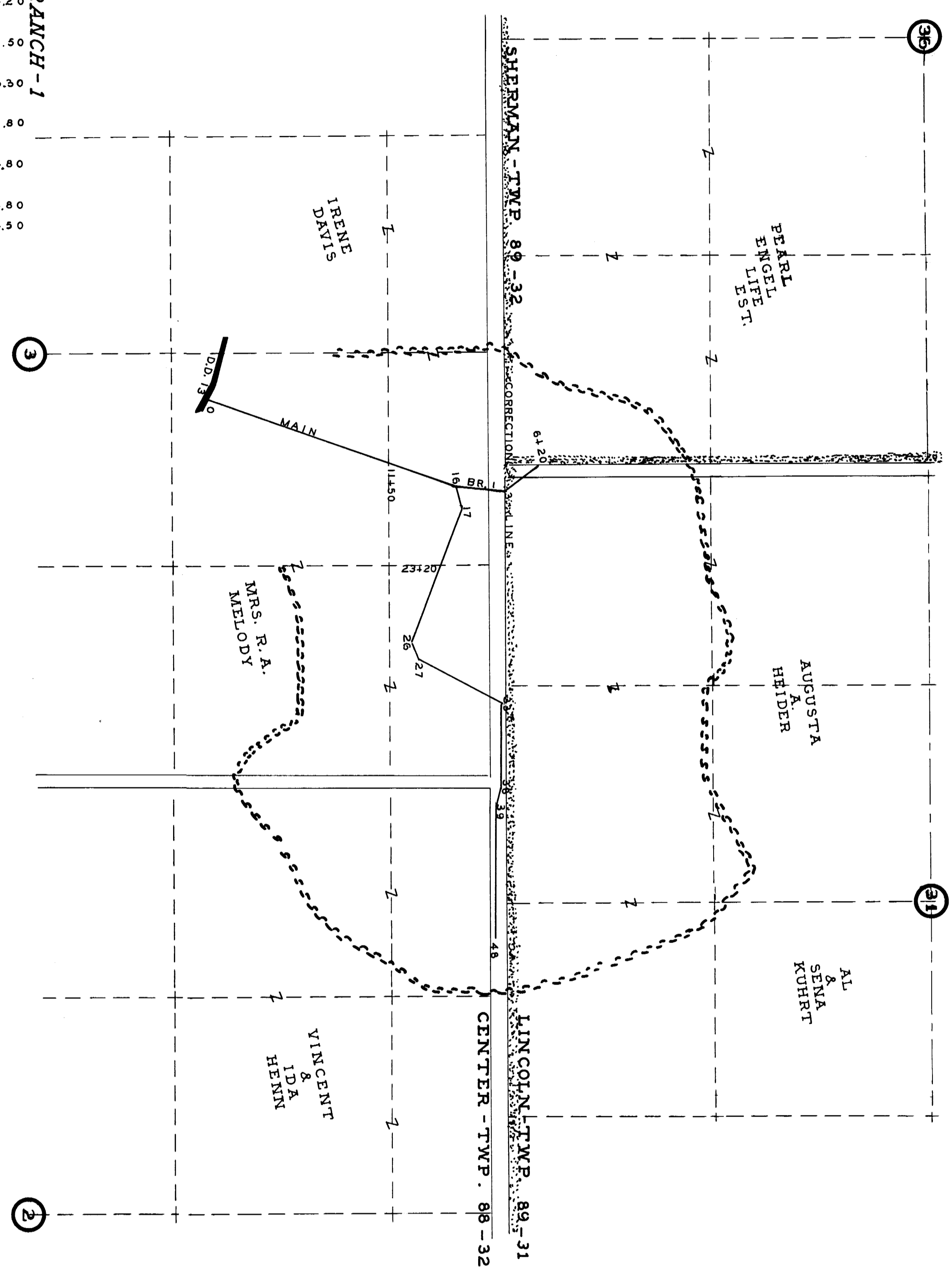


PLAT OF
DRAINAGE DISTRICT
NO. 192

CALHOUN COUNTY
CENTER TOWNSHIP
T-88-N. R-32-W.
SECTION 2, 3
LINCOLN TOWNSHIP
T-89-N. R-31-W.
SECTION 31
SHERMAN TOWNSHIP
T-89-N. R-32-W.
SECTION 36
SCALE 1" = 500'

DRAWN BY J.P. MOORE 1914
REDRAWN BY W.C. OTTO ENGR. CO. SAC CITY, IOWA 1956

- LEGEND
- WATERSHED-BOUNDARY
 - PROPOSED-TILES
 - OPEN-DITCH
 - TOWNSHIP-LINE
 - HIGHWAY
 - 1/2-SECTION-LINE
 - 1/4-SECTION-LINE
 - SECTION-NO.



PROFILE

