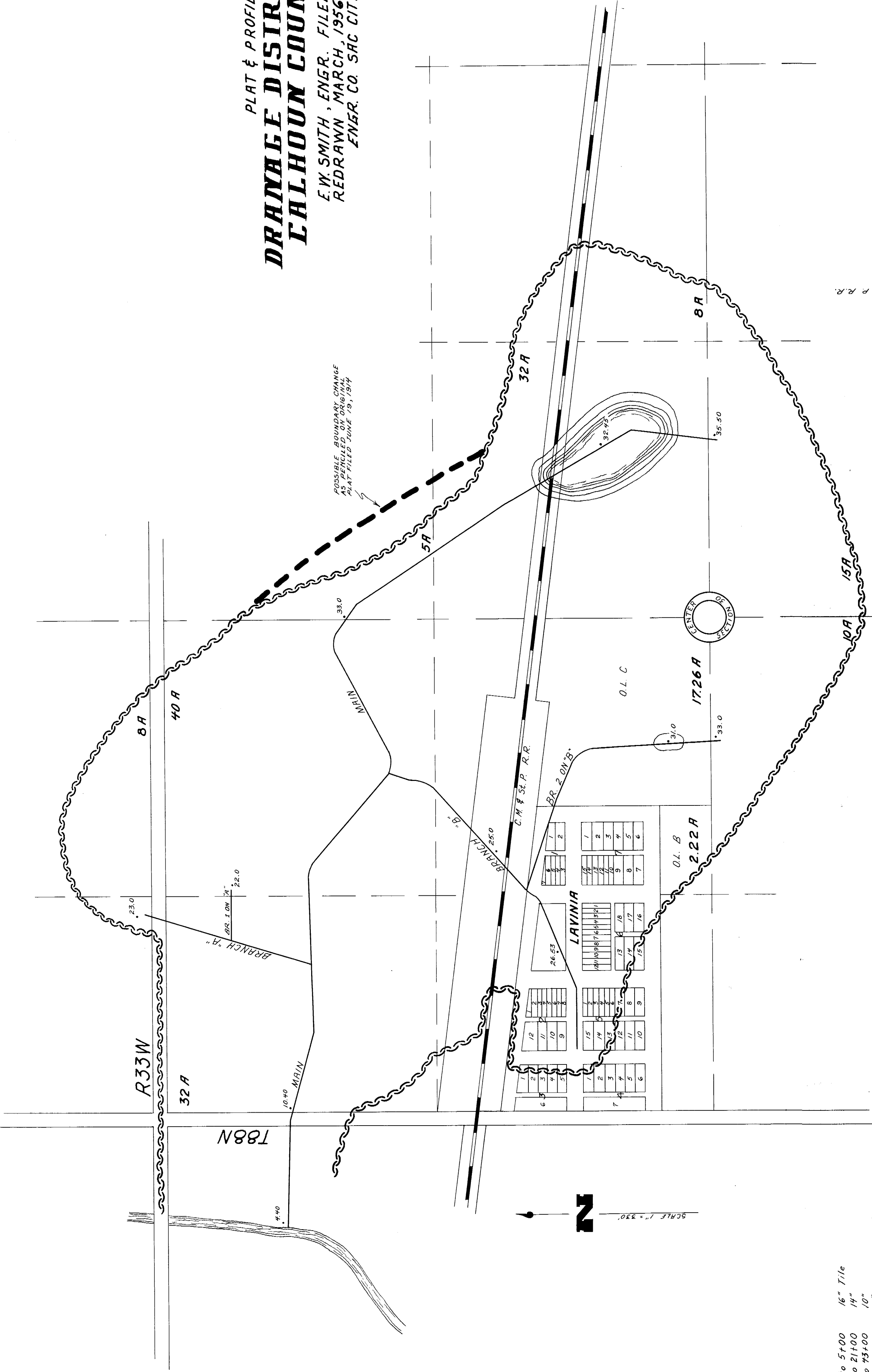


**PLAT & PROFILE**  
**DRAINAGE DISTRICT NO. 193**  
**CALHOUN COUNTY, IOWA**

E.W. SMITH, ENGR. FILED JUNE 19, 1954  
 REDRAWN MARCH, 1956 BY H.C. OTTO  
 ENGR. CO. SAC CITY, IA.

POSSIBLE BOUNDARY CHANGE  
 AS PERMITTED BY ORIGINAL  
 SURVEY DATA (S, 1874)



Section	Stationing	16" Tile
MAIN	0+00 to 5+00	14"
	5+00 to 21+00	12"
	21+00 to 51+00	10"
	51+00 to 95+00	8"
BRANCH "A"	0+00 to 4+00	8"
	4+00 to 6+50	6"
BRANCH 1 on "A"	0+00 to 2+00	6"
	0+00 to 8+00	12"
BRANCH "B"	8+00 to 12+00	8"
	12+00 to 17+00	6"
BRANCH 2 on "B"	0+00 to 7+00	8"
	7+00 to 11+00	7"
	11+00 to 15+00	6"

