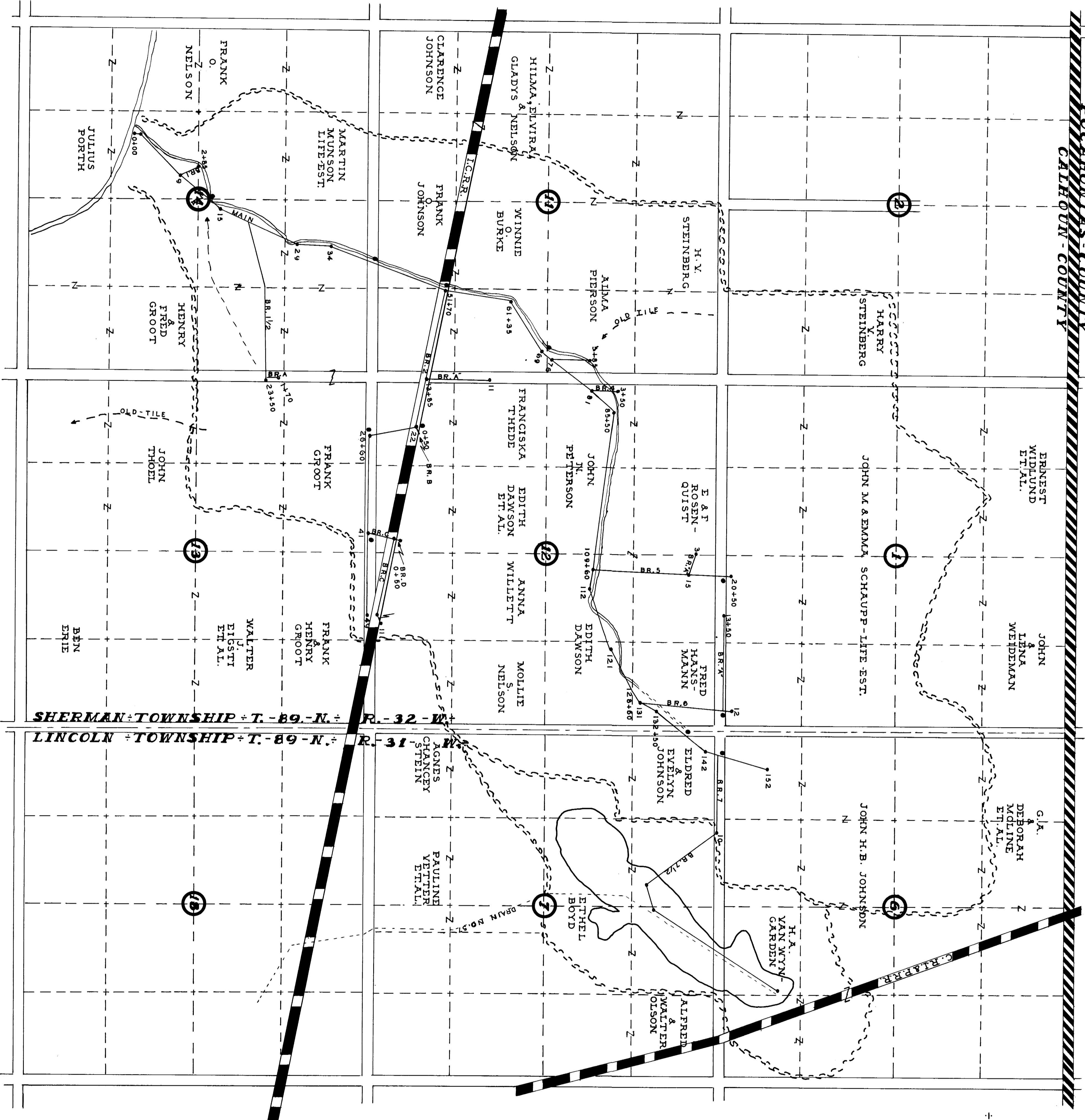


POCAHONTAS COUNTY
CALHOUN COUNTY



PLAT
OF
DRAINAGE DISTRICT
NO. 197

CALHOUN COUNTY
SHERMAN TOWNSHIP
T. 89-N., R. 32-W.
SECTION 1, 2, 11, 12, 13, 14
LINCOLN TOWNSHIP
T. 89-N., R. 31-W.
SECTION 6, 7, 18
SCALE 1" = 800'

DRAWN BY
J.P. MOORE
1915

REDRAWN BY
W.C. OTTO
ENGR. CO.
SAC. CITY, IOWA
1956

LEGEND

- WATERSHED - BOUNDARY
- PROPOSED - TILE
- OLD - DITCH
- OPEN - DITCH
- TOWNSHIP - ROAD
- COUNTY - LINE - ROAD
- 1/2 - SECTION - LINE
- 1/4 - SECTION - LINE
- COUNTY - ROAD