

**PLAT AND PROFILE  
OF  
DRAINAGE DISTRICT NO. 211**

**CALHOUN COUNTY, IOWA**  
 DRAWN BY J. P. MOORE ENGR. MAY 1916  
 REDRAWN BY W. C. OTTO ENGR. CO. SAC CITY IOWA  
 MARCH 1956

FIGURE 4.1

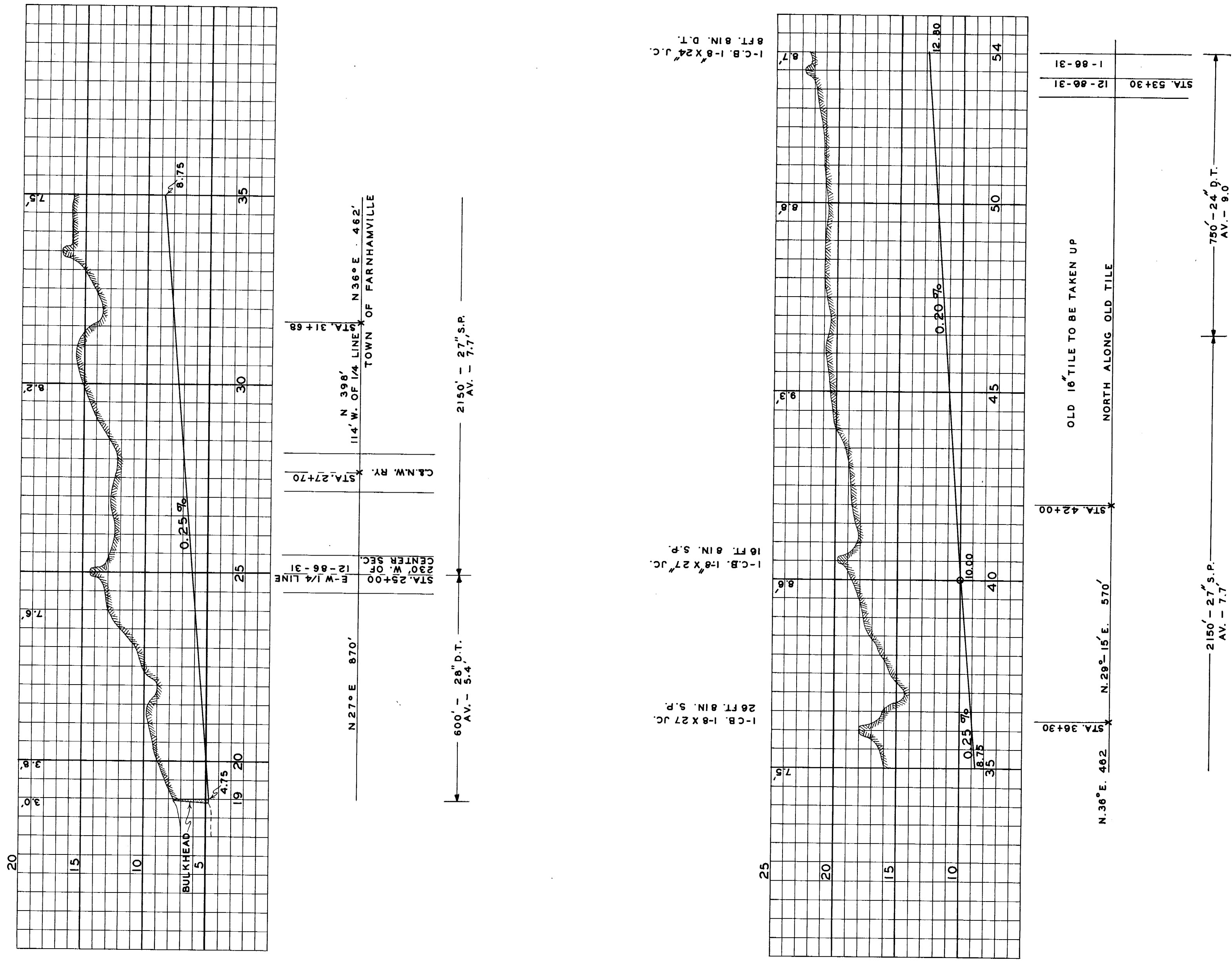


EXHIBIT B