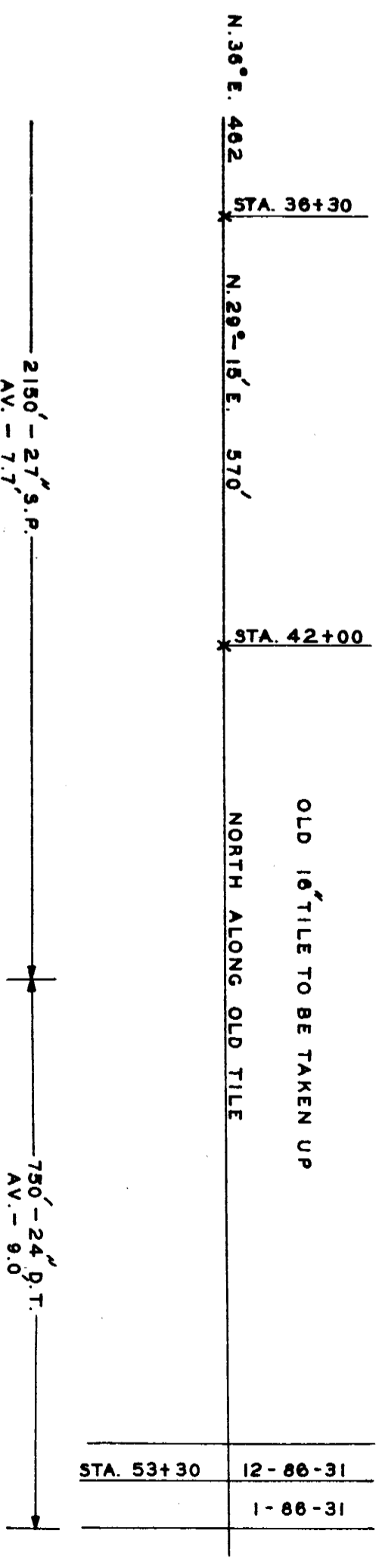
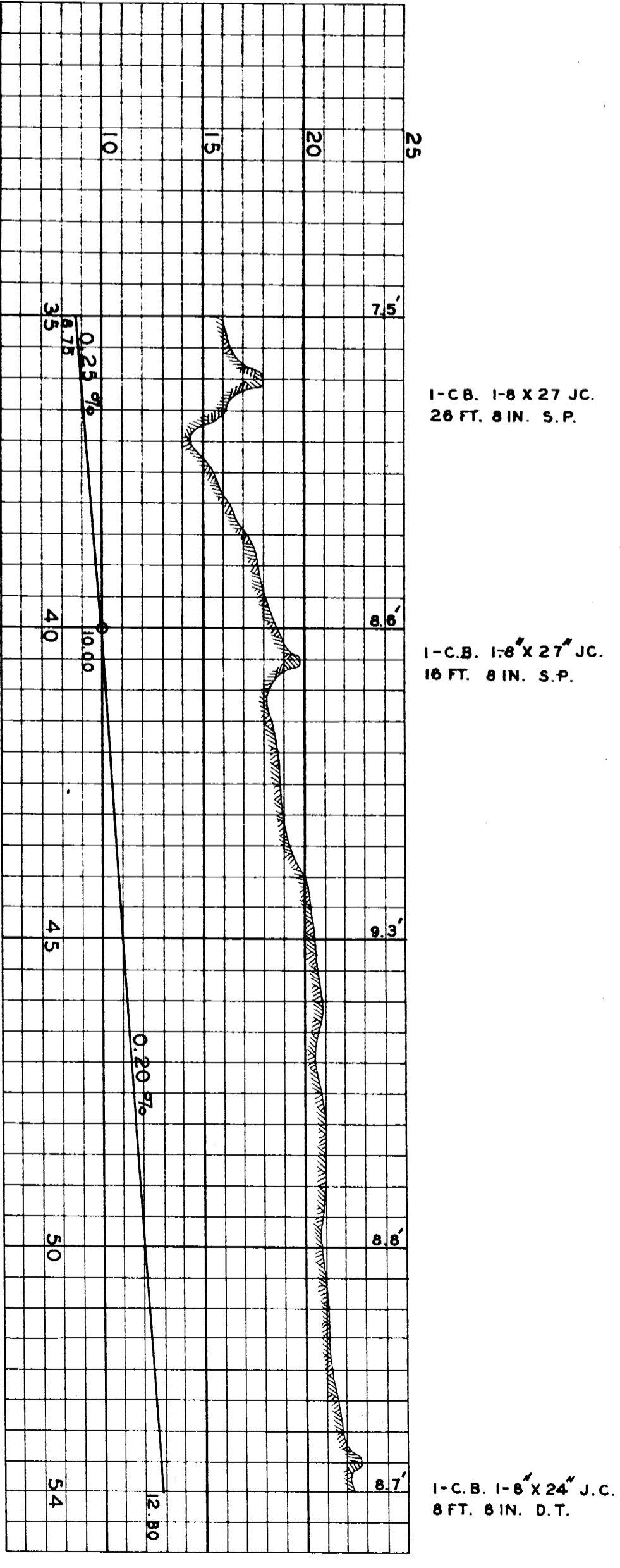
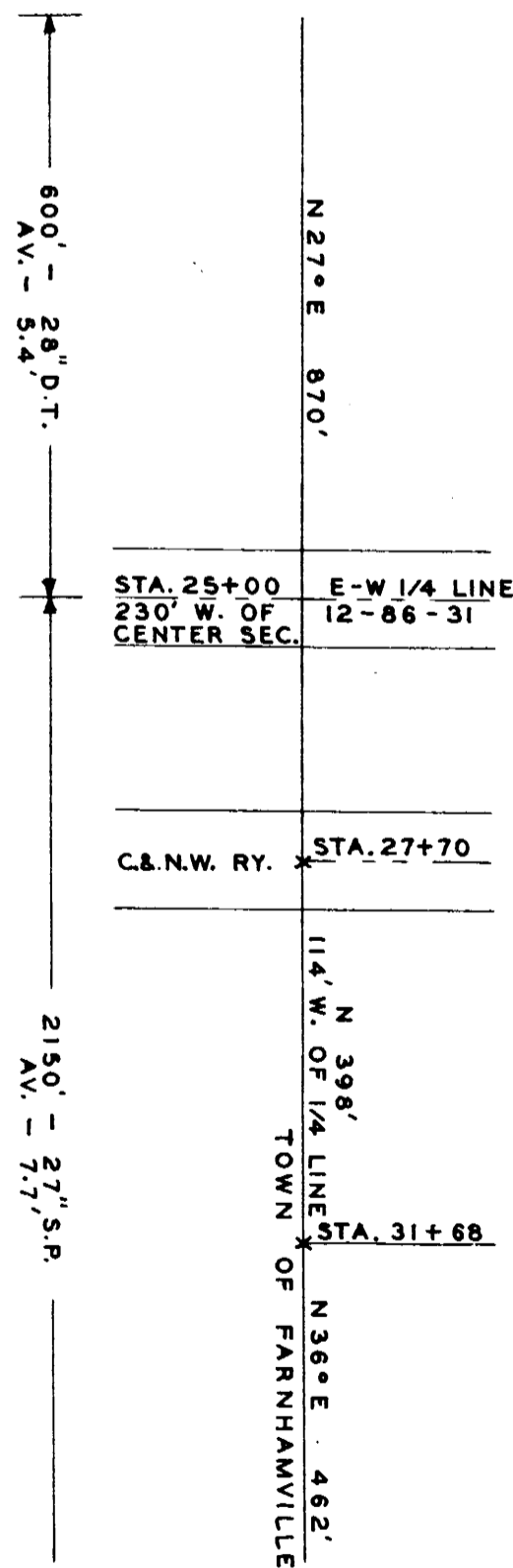
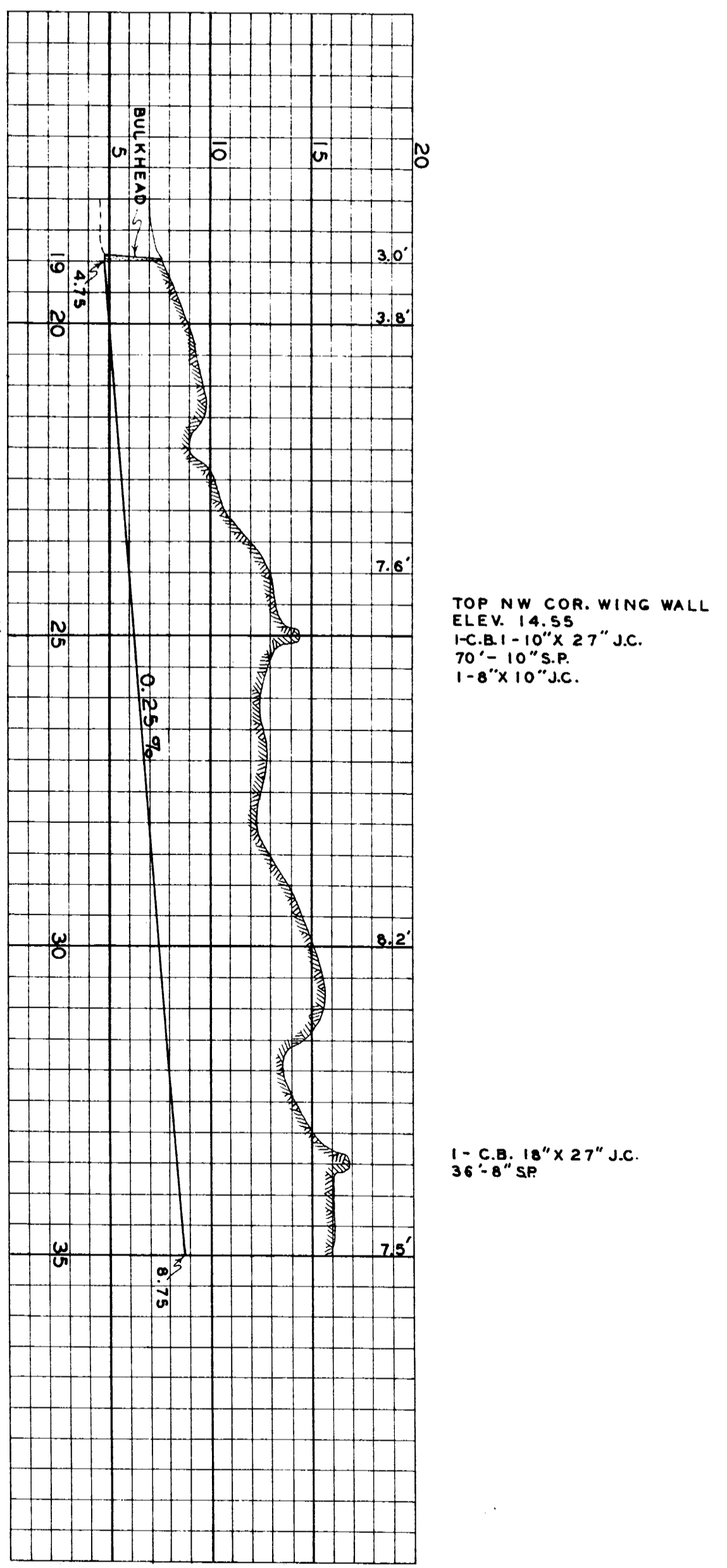


PLAN AND PROFILE
OF

DRAINAGE DISTRICT NO. 211

CALHOUN COUNTY, IOWA

DRAWN BY J. P. MOORE ENGR. MAY 1916.
REDRAWN BY W. C. OTTO ENGR. CO. SACS CITY IOWA
MARCH 1956



SCALE 1:880