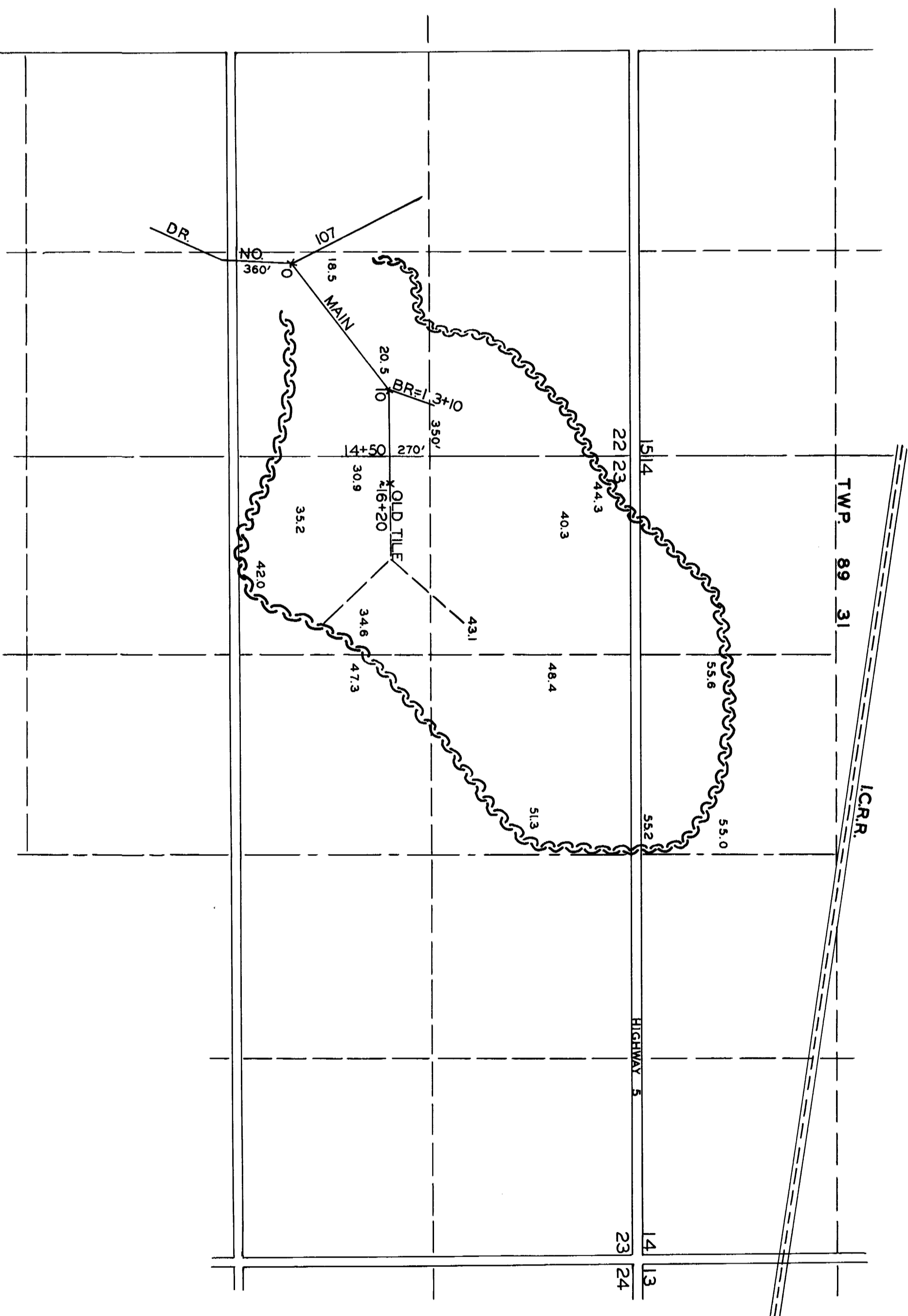


PLAT & PROFILE
 OF
DRAINAGE DISTRICT NO. 235
CALHOUN COUNTY, IOWA
 AUG. 1917
 J.P. MOORE, ENGR.
 REDRAWN
 BY
 W.C. OTTO, ENGR.
 MARCH 1956



LEGEND

- ~~~~~ WATERSHED BOUNDARY
- TILE
- OLD TILE
- 1/4 1/4 LINE
- 1/4 LINE
- SECTION LINE
- ROADS
- ==== RAIL ROADS

