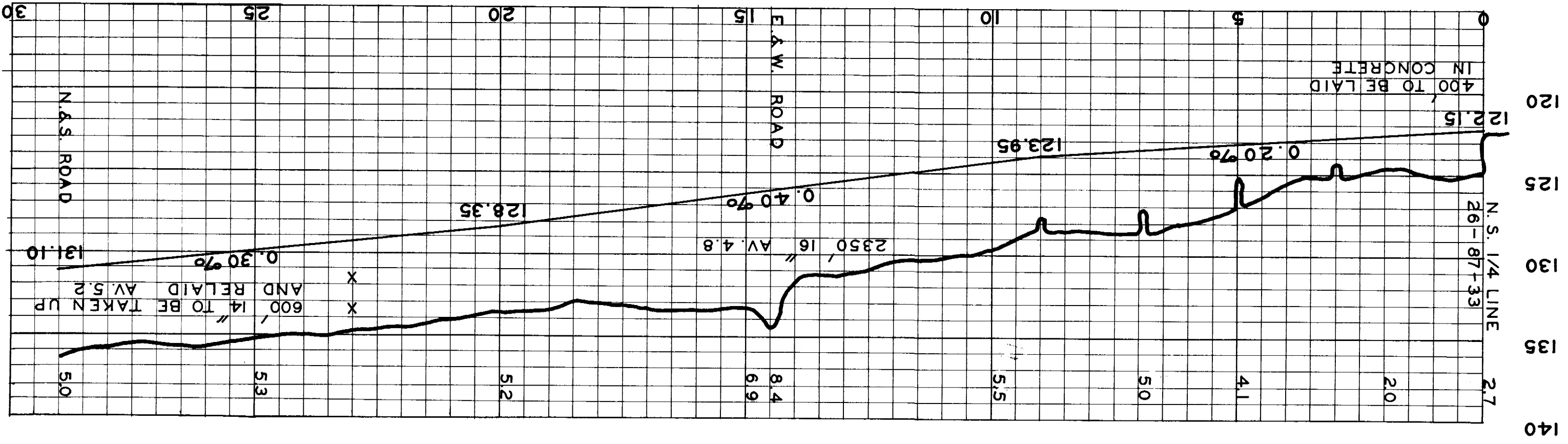
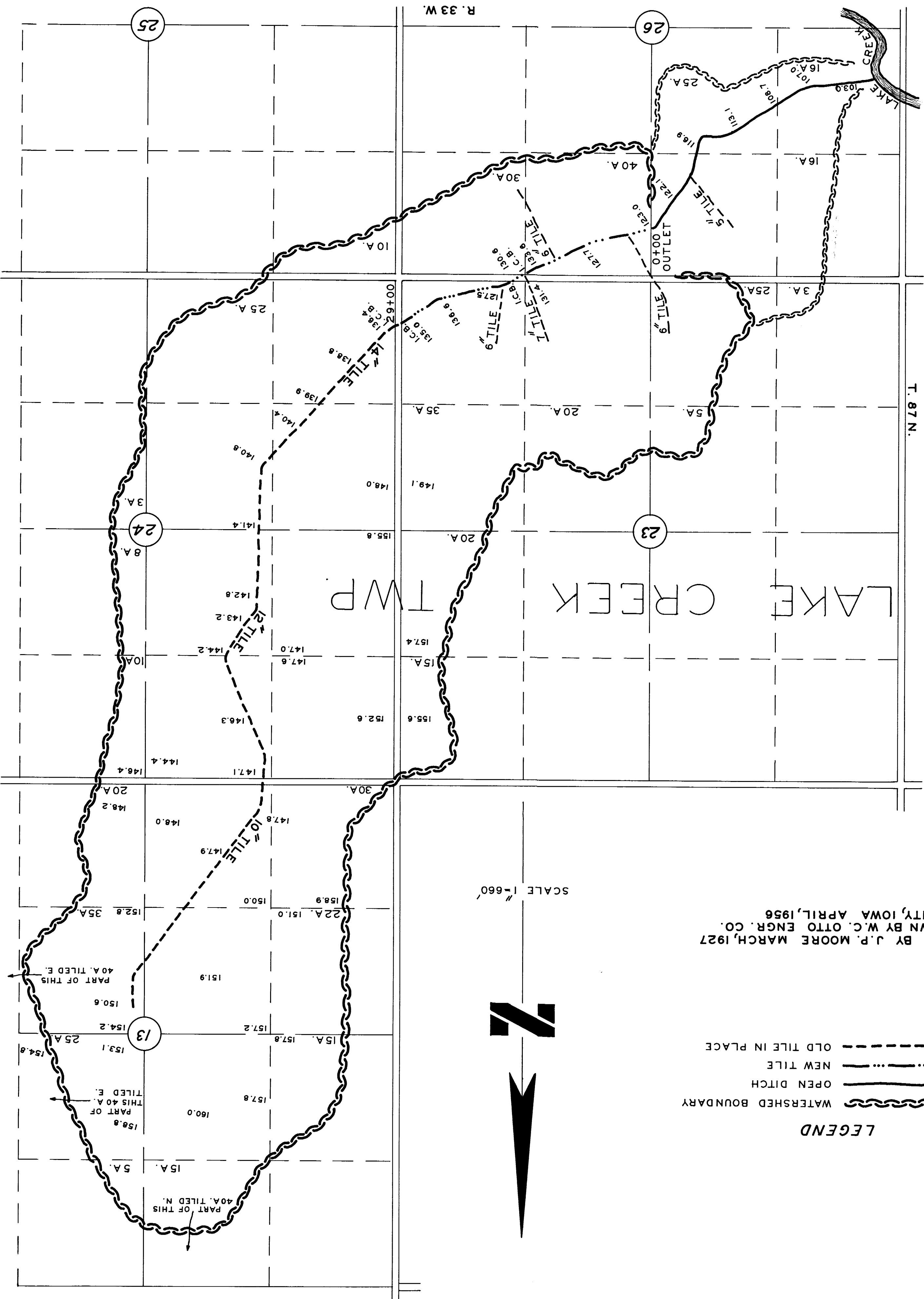


DRAINAGE DISTRICT NO. 258
OF
PLAT & PROFILE
CALHOUN COUNTY, IOWA
SEC.-13-23-24-25-26
LAKE CREEK TWP.



PROFILE



DRAWN BY J.P. MOORE MARCH, 1927
REDRAWN BY W.C. OTTO ENGR. CO.
SAC CITY, IOWA APRIL, 1956

SCALE 1"=660'

LEGEND

- WATERSHED BOUNDARY
- - - - - OPEN DITCH
- NEW TILE
- - - - - OLD TILE IN PLACE