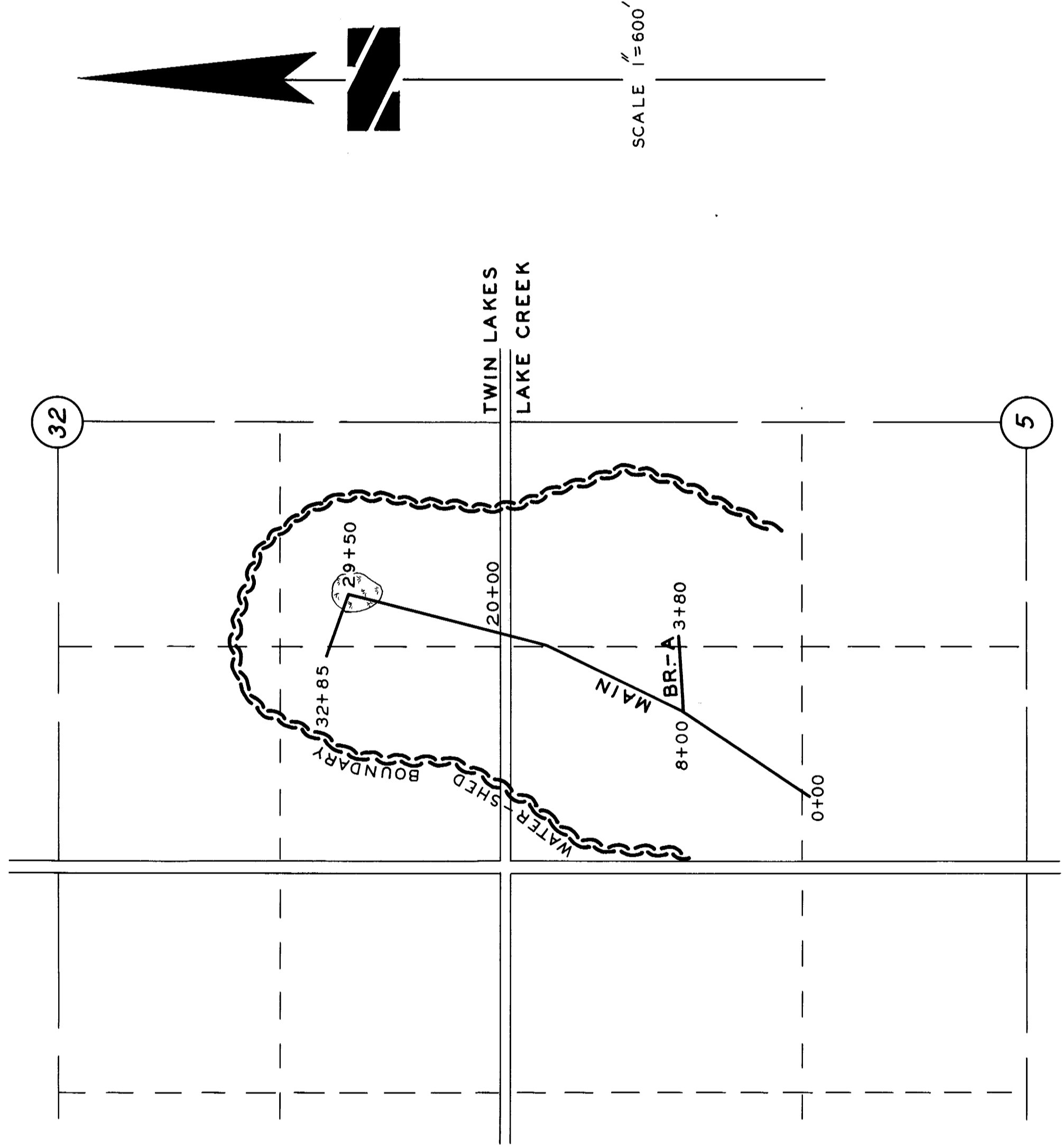


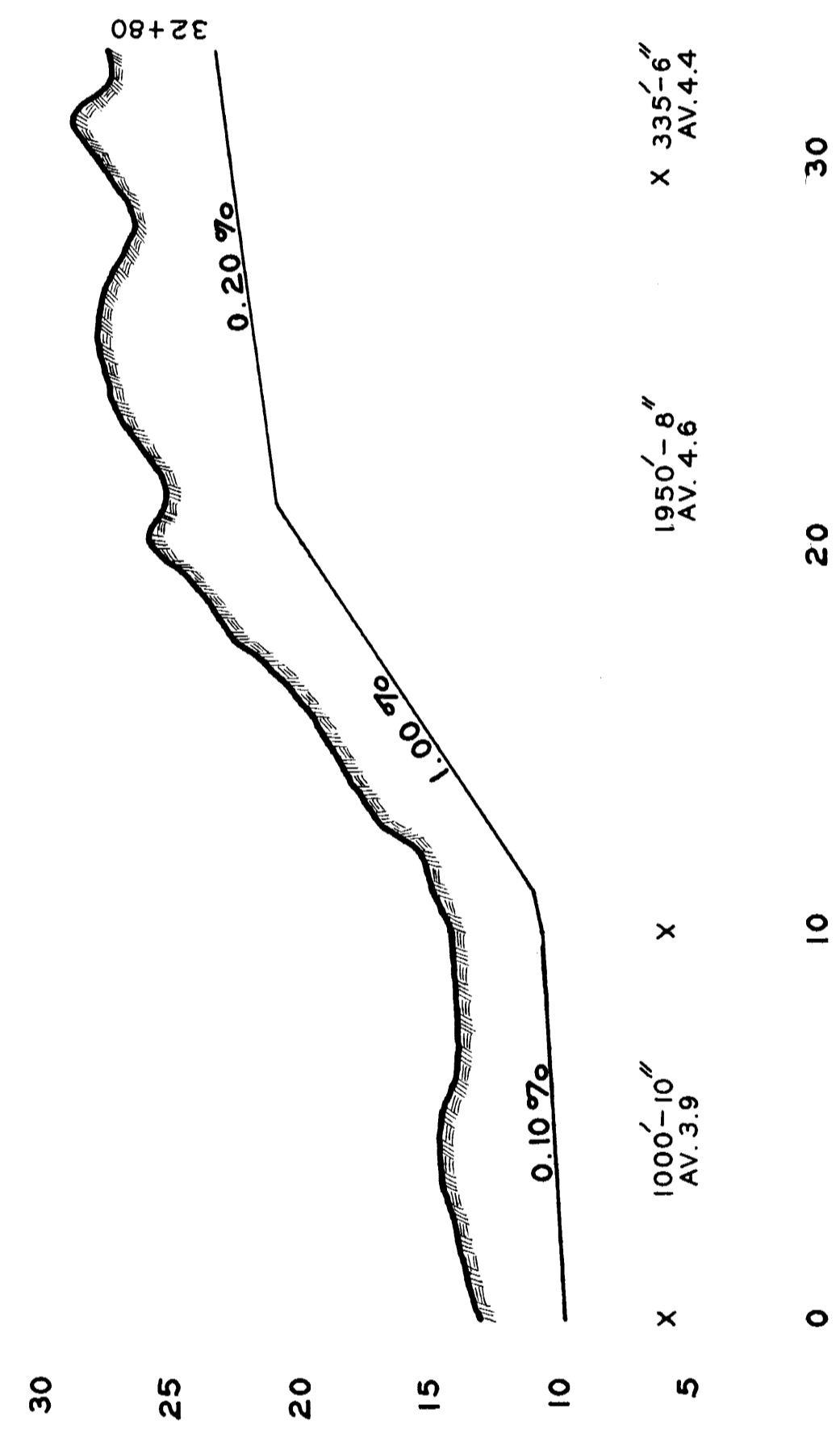
PLAT & PROFILE OF DRAINAGE DISTRICT NO. 264 CALHOUN COUNTY, IOWA

SEC. 32 TWIN LAKES
SEC. 5 LAKE CREEK

DRAWN BY W. E. MC-CLURE 1938
REDRAWN BY W. C. OTTO ENGR. CO.
SAC CITY IOWA, APRIL 1956



MAIN



BRANCH-A

