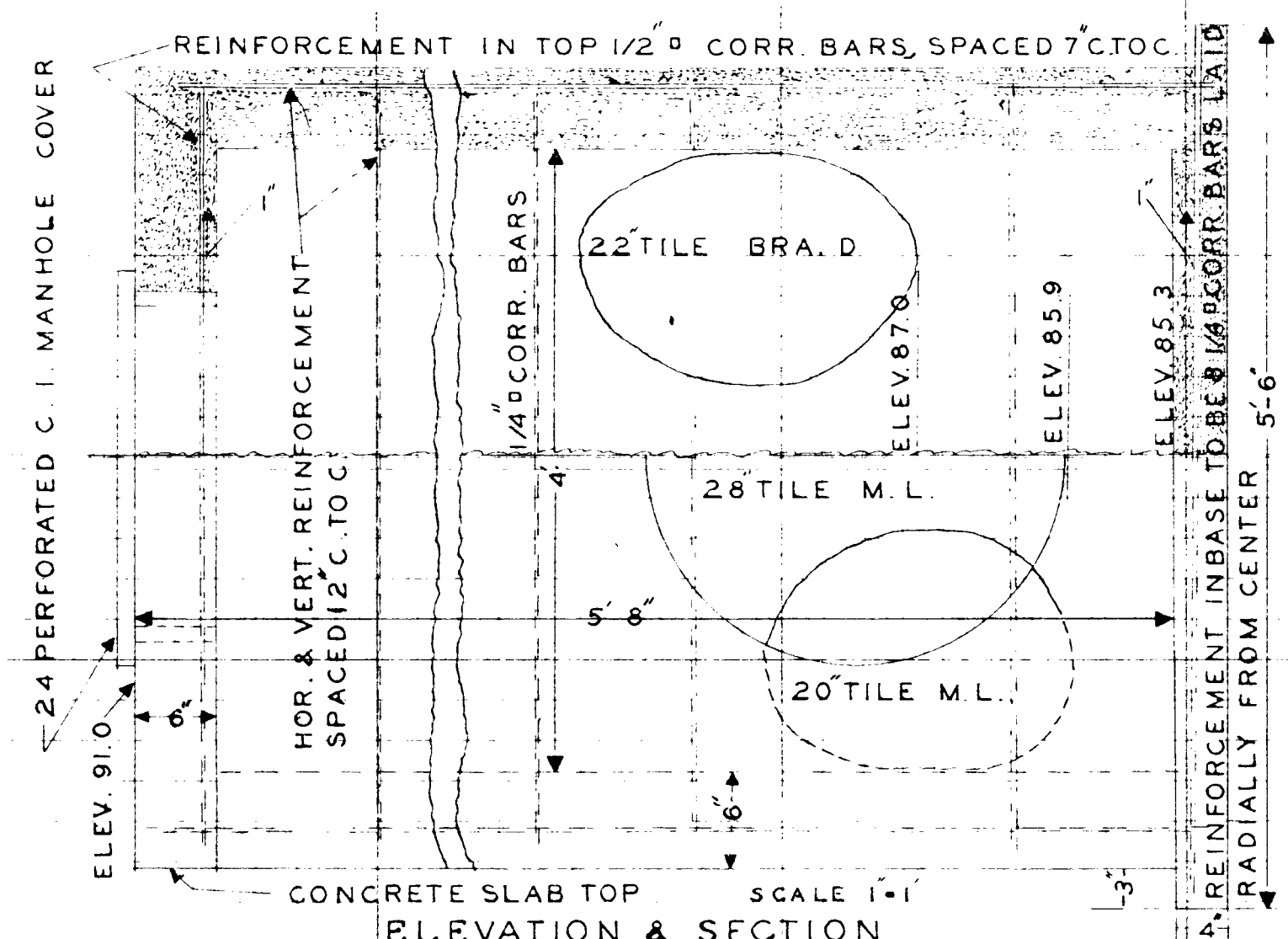
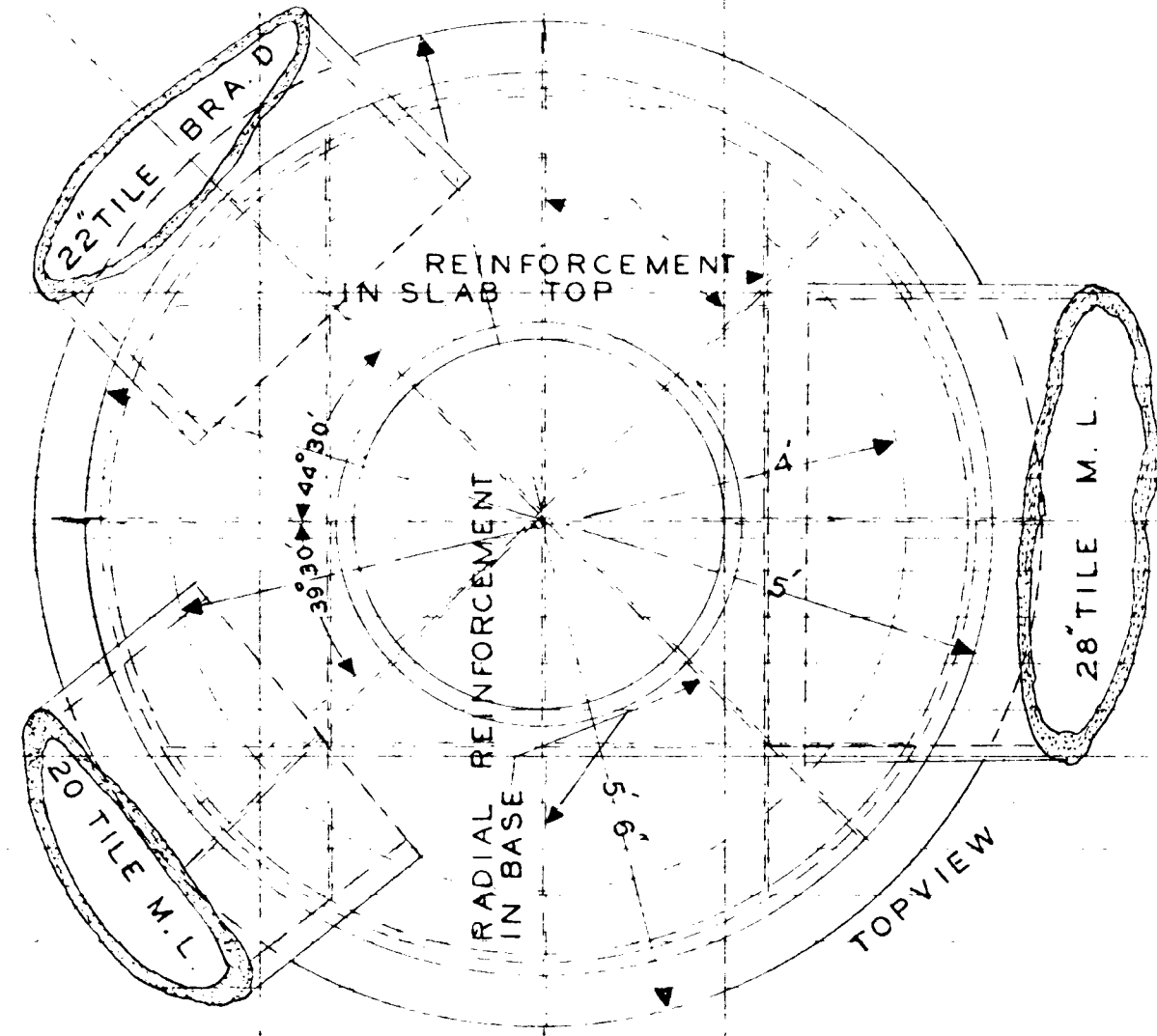
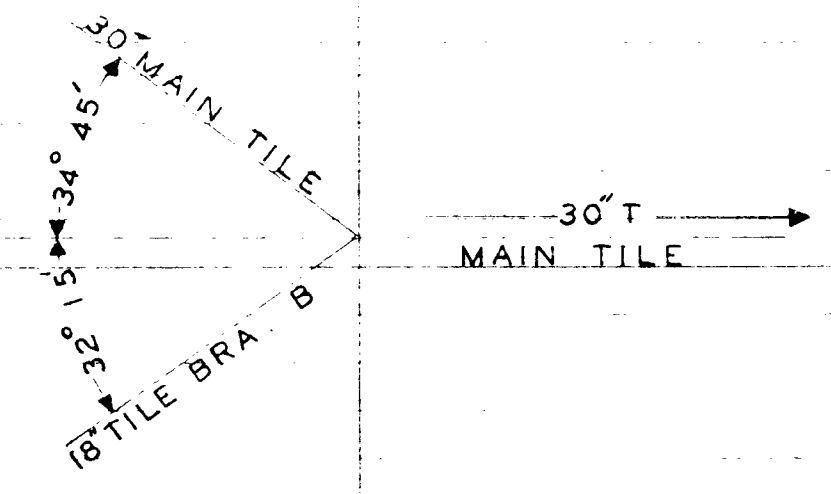


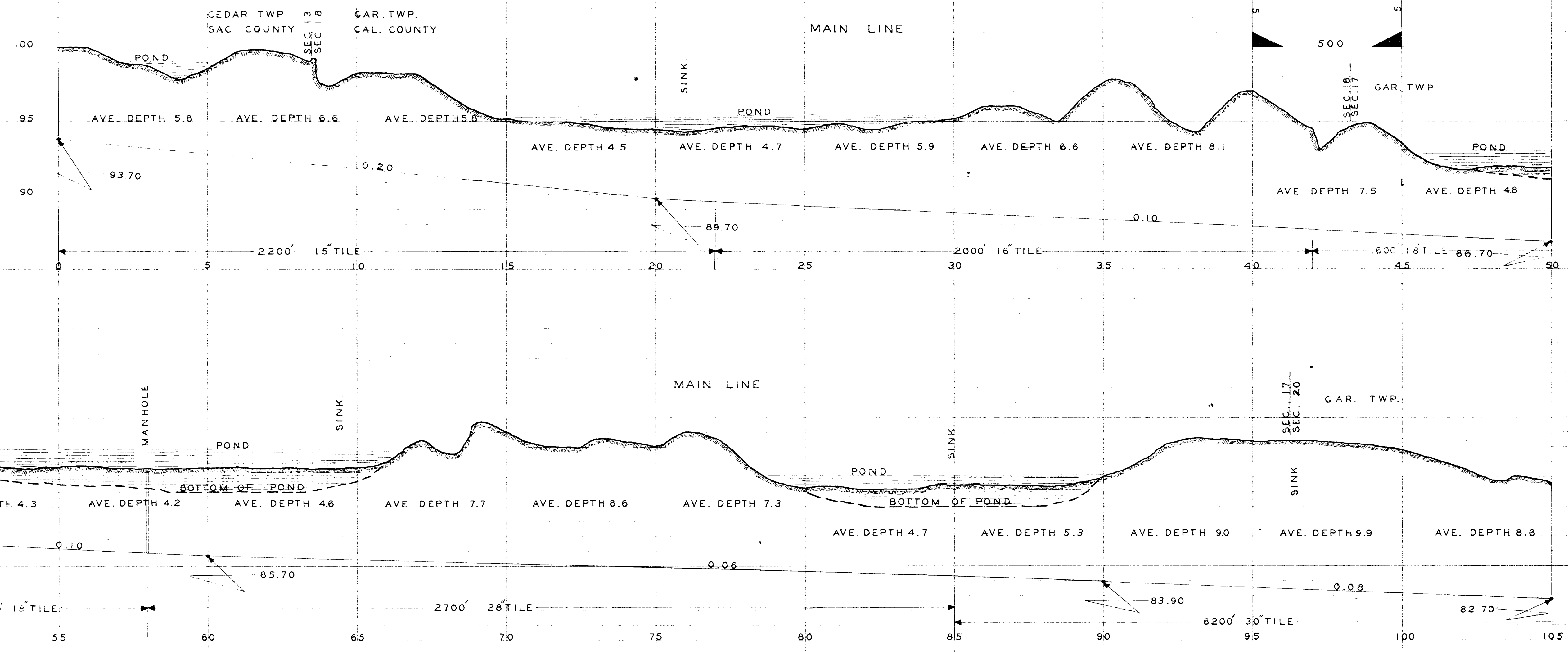
PROFILE OF DRAINAGE DISTRICT NO. 59 CAL. CO. NO. 7 SAC CO. MARCH 1907



NOTE THE MANHOLE AT STA. 132 IS TO BE OF SIMILAR DESIGN AS THAT AT STA. 58 IT INTERNAL DIA. TO BE 5' & DEPTH 7' 8" WALLS, COVER, & BASE TO BE OF SAME THICKNESS AND REINFORCEMENT AS THAT AT STA. 58. THE LAYOUT FOR POSITION OF TILE IS SHOWN BELOW

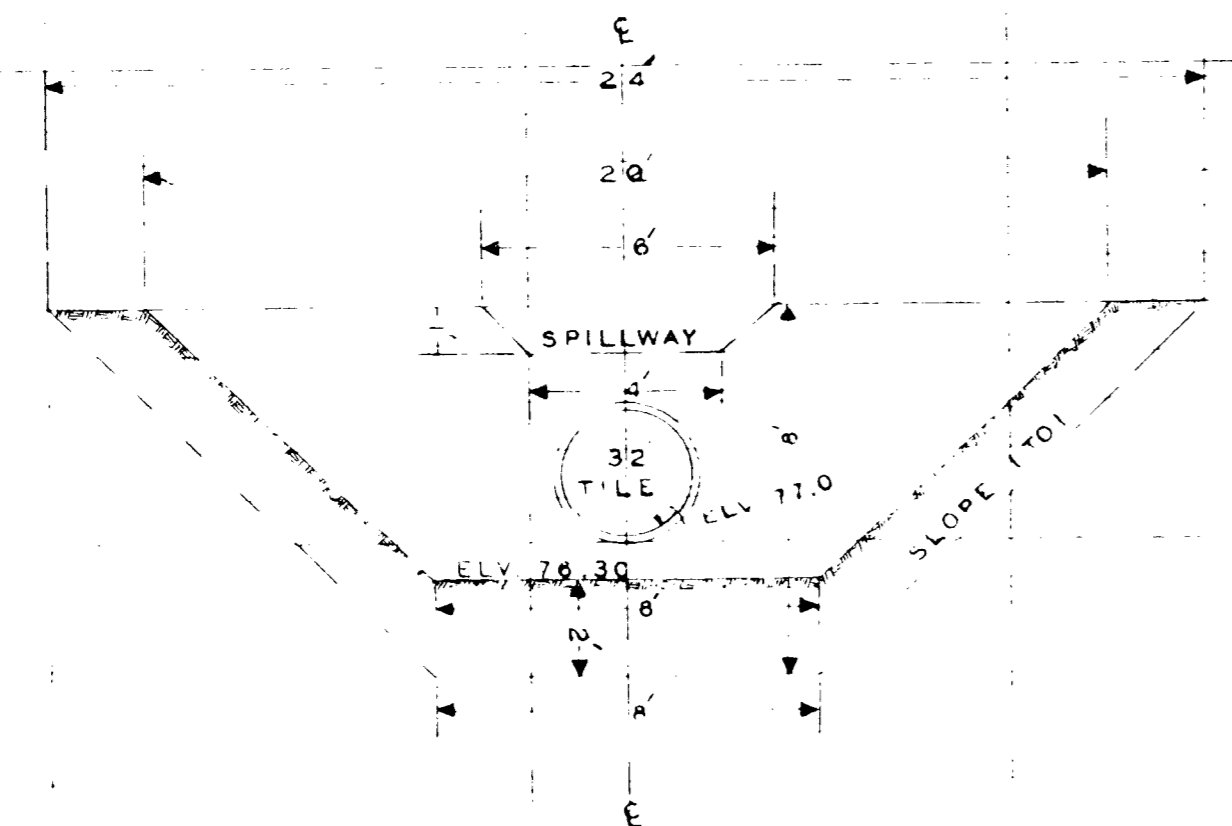
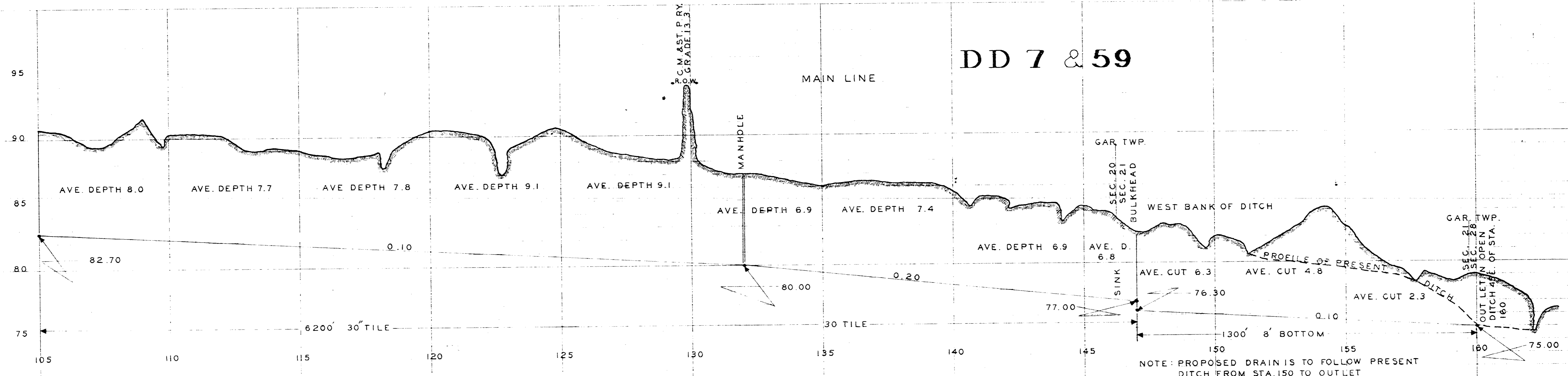


ELEVATION & SECTION
PLAN FOR MANHOLE AT STA. 58 M.L.
TO BE CONSTRUCTED OF CONCRETE 1:4 MIXTURE OR 8 BRICK WALLS WITH TOP & BOTTOM AS SHOWN

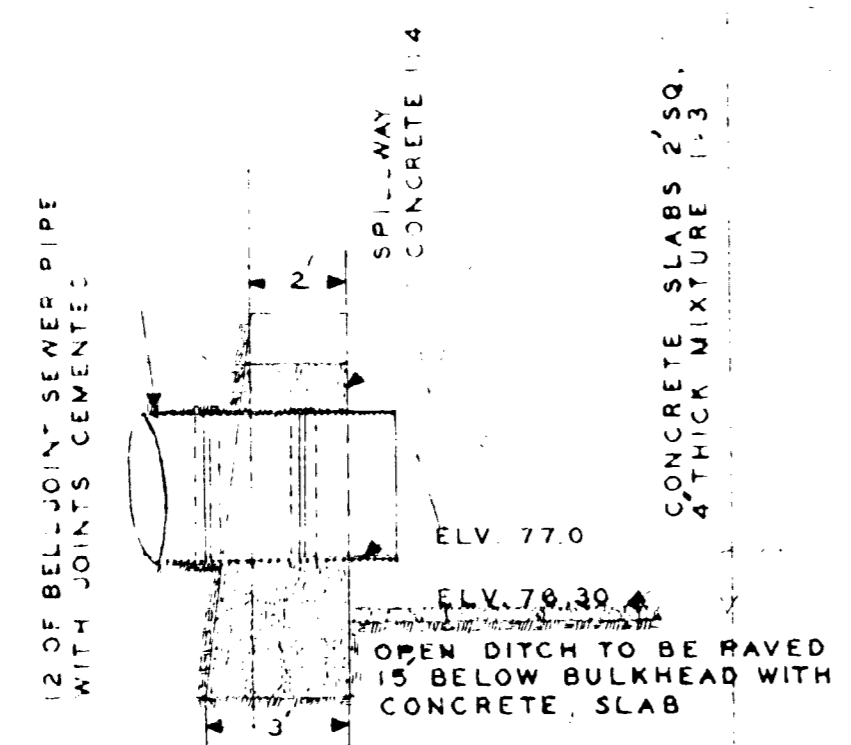


SHEET NO. 1

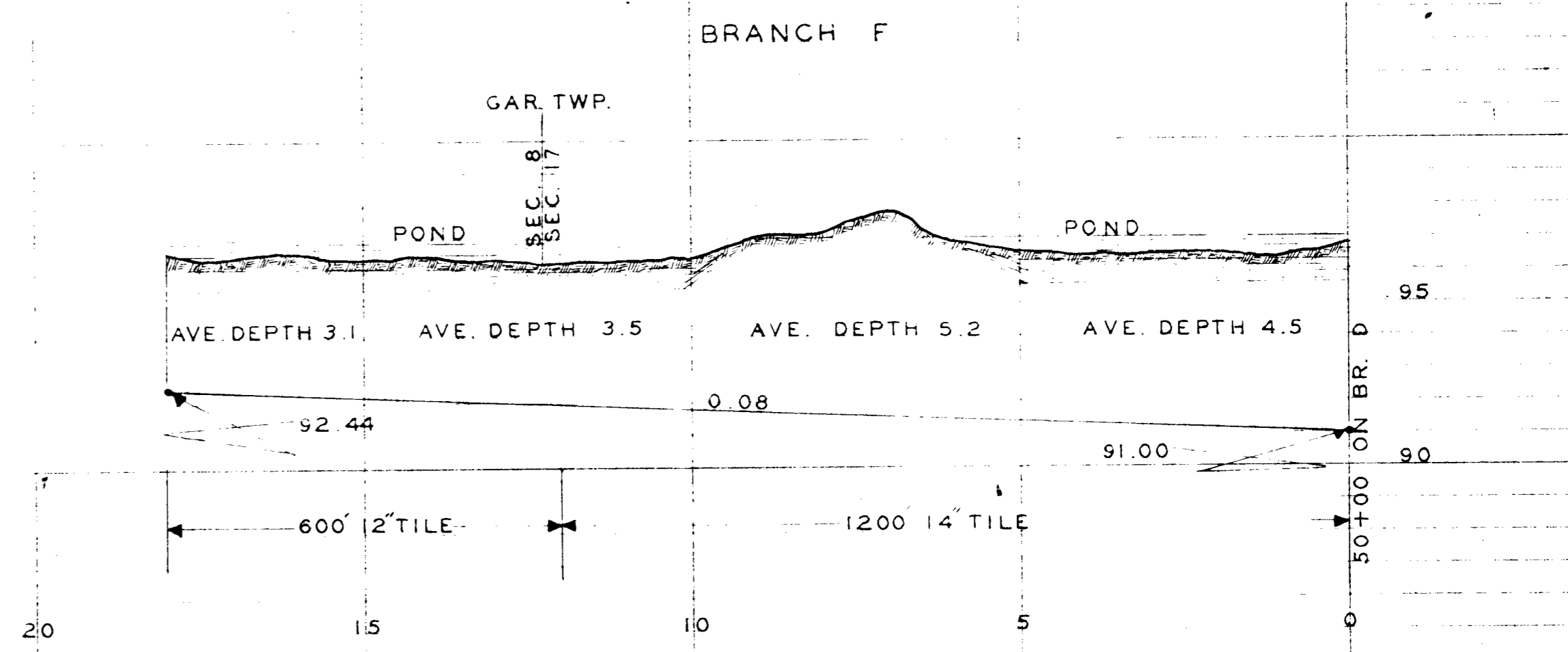
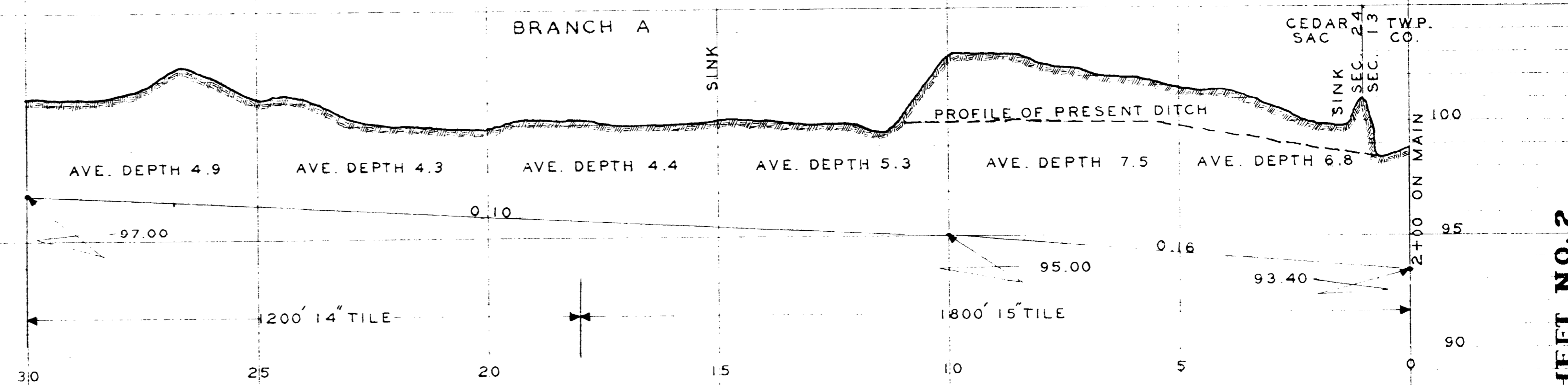
DD 7 & 59



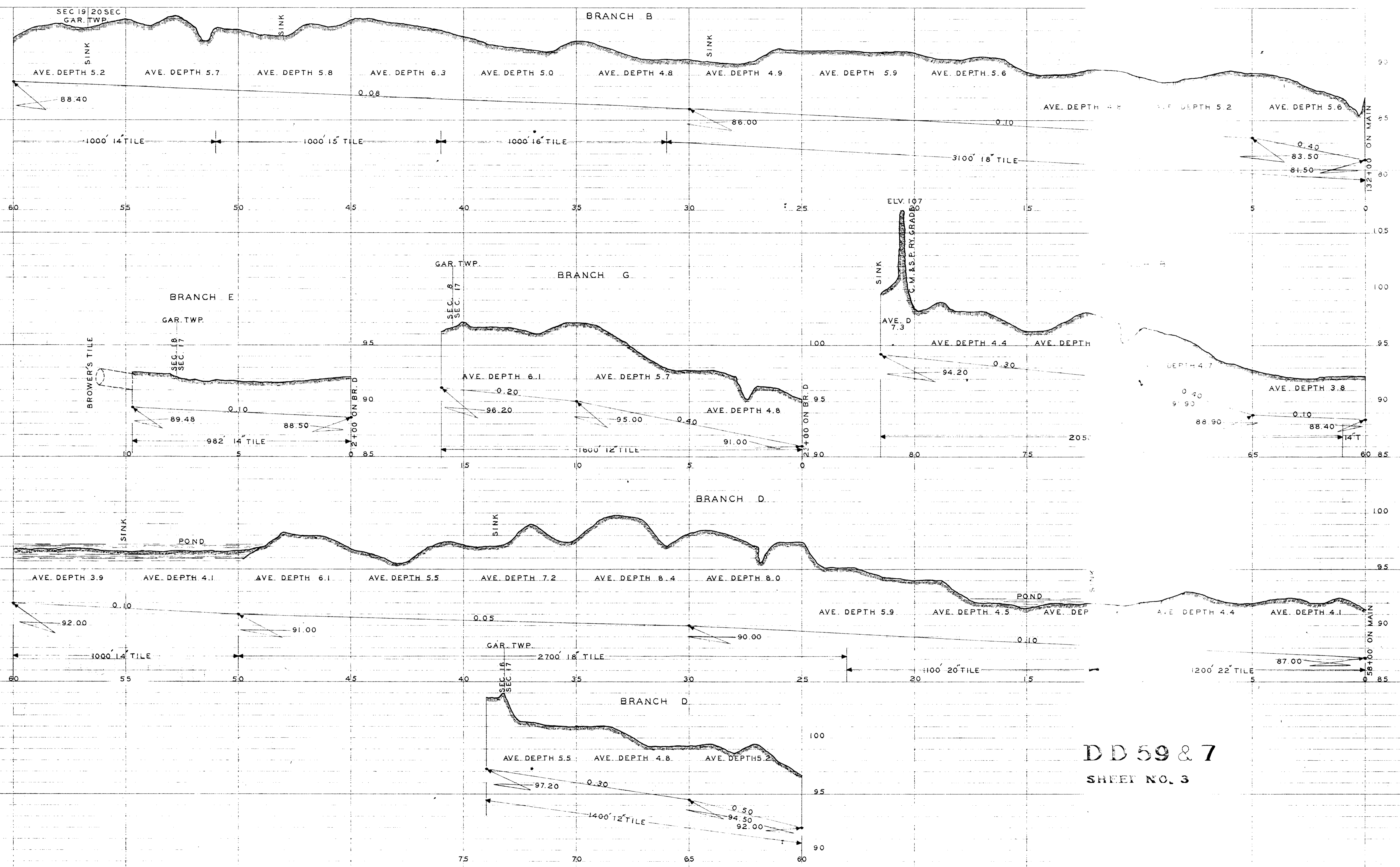
ELEVATION OF BULKHEAD AT STATION 147+00



CROSS SECTION OF BULKHEAD AT STATION 147+00



SHEET NO. 2



DD 59 & 7
SHEET NO. 3