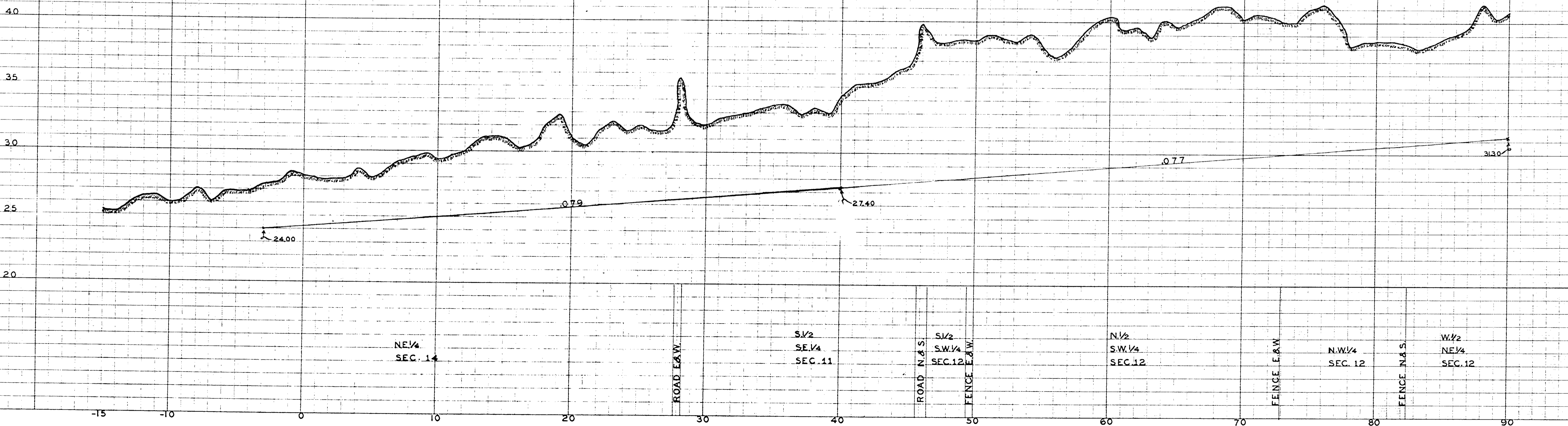
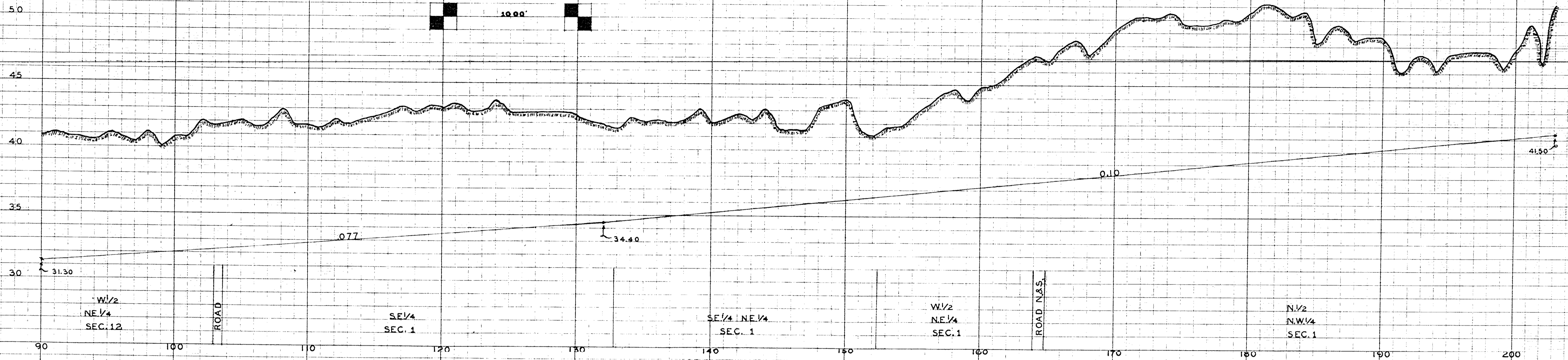
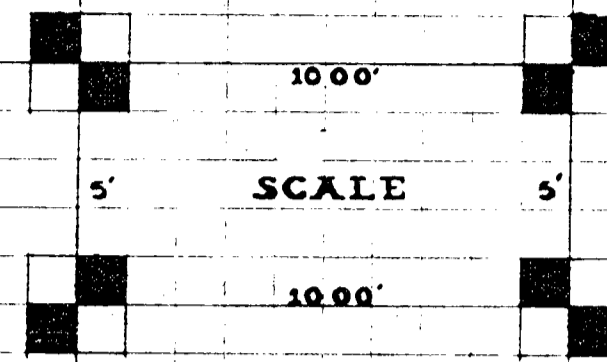


DRAINAGE - DISTRICT - NO. 10

CALHOUN COUNTY
LAKE CREEK TOWNSHIP

SECTION 1, 11, 12, 14.

RETRACED BY,
W.C. OTTO-ENGR. COMPANY,
SAC CITY, IOWA
DECEMBER, 1953



THIS STANDARD MARK
IS A REGISTERED TRADE MARK
OF THE
KLUFFEL & ESSER CO.
NEW YORK

THIS STANDARD MARK
IS A REGISTERED TRADE MARK
OF THE
KLUFFEL & ESSER CO.
NEW YORK

THIS STANDARD MARK
IS A REGISTERED TRADE MARK
OF THE
KLUFFEL & ESSER CO.
NEW YORK

KLUFFEL & ESSER CO.
NEW YORK