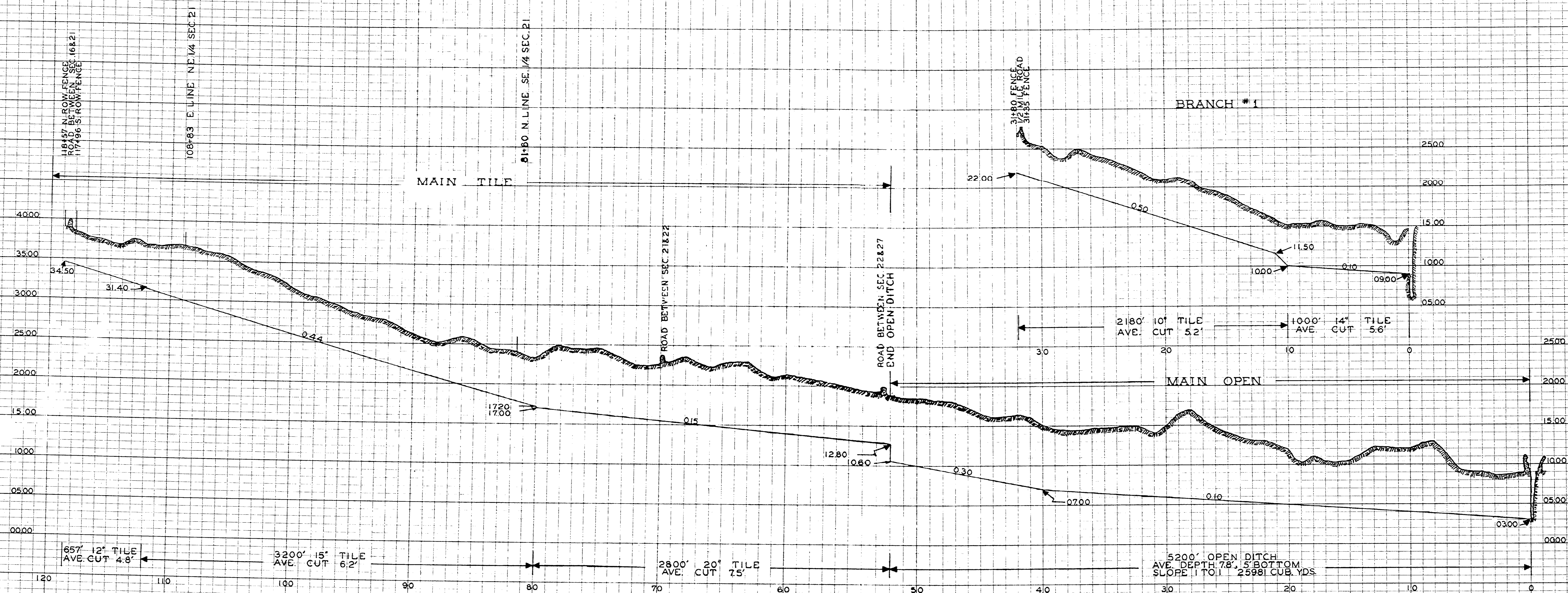


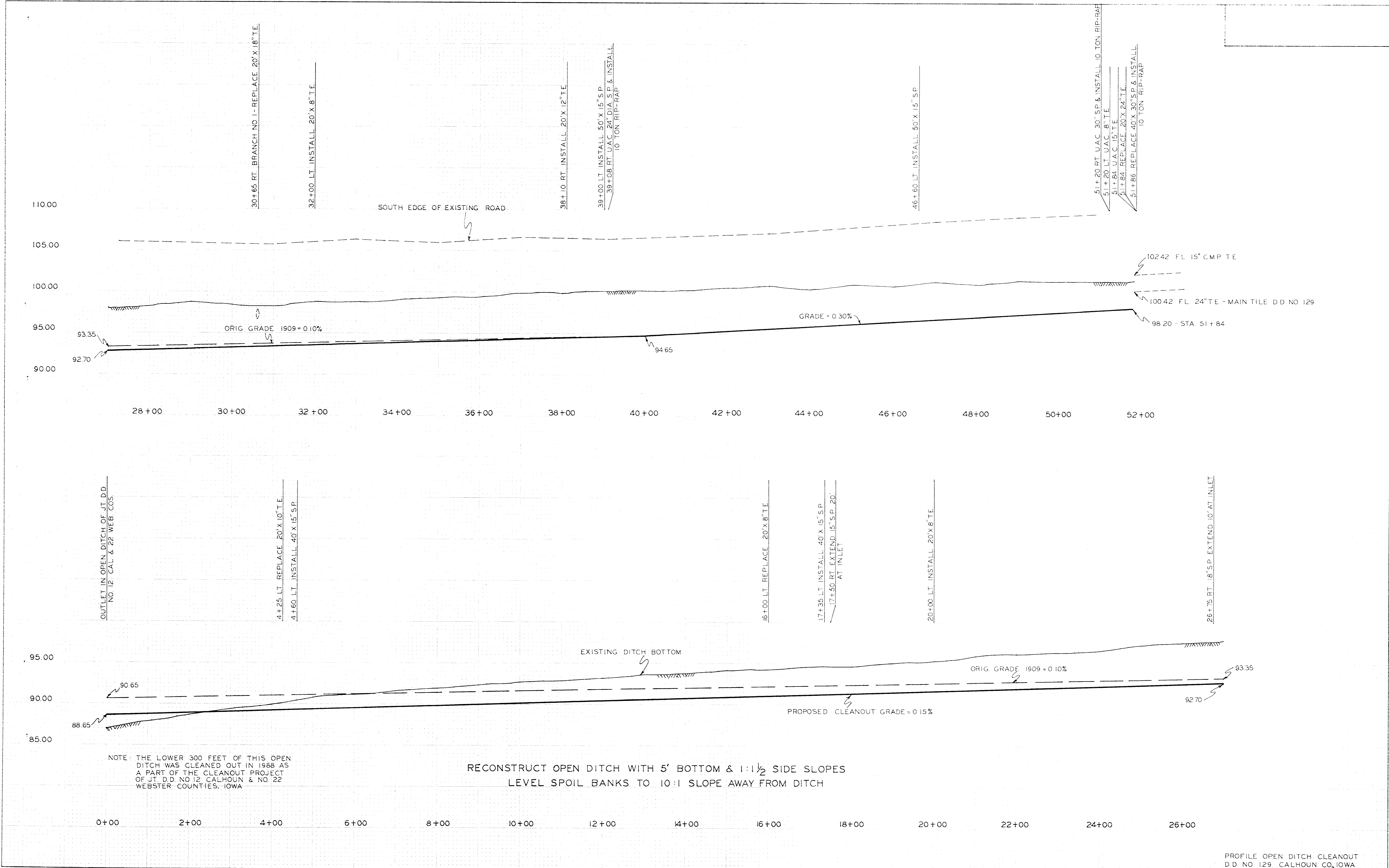
PROFILE
OF
PROPOSED DRAINS
FOR
DRAINAGE DISTRICT No 129
CALHOUN COUNTY, IOWA

DRAWN BY L.M. BUDE ENGR.
REDRAWN BY W.C. OTTO ENGR. CO.
SAC CITY IOWA JANUARY 1956



FINAL SURVEY	DATE
BY	
REVISIONS	
NO. DATE	
1 10/1/88	
2 10/1/88	
3 10/1/88	
4 10/1/88	
5 10/1/88	
6 10/1/88	
7 10/1/88	
8 10/1/88	
9 10/1/88	
10 10/1/88	

ORIGINAL SURVEY	DATE
BY	
REVISIONS	
NO. DATE	
1 10/1/88	
2 10/1/88	
3 10/1/88	
4 10/1/88	
5 10/1/88	
6 10/1/88	
7 10/1/88	
8 10/1/88	
9 10/1/88	
10 10/1/88	



NOTE: THE LOWER 300 FEET OF THIS OPEN DITCH WAS CLEANED OUT IN 1988 AS A PART OF THE CLEANOUT PROJECT OF JT DD NO 12 CALHOUN & NO 22 WEBSTER COUNTIES, IOWA

RECONSTRUCT OPEN DITCH WITH 5' BOTTOM & 1:1 1/2 SIDE SLOPES
LEVEL SPOIL BANKS TO 10:1 SLOPE AWAY FROM DITCH

DATE	BY
SURVEYED	BY
NO. OF BOOKS	NO. OF SHEETS
NO. OF SHEETS	NO. OF SHEETS
AREAS CHECKED	AREAS CHECKED

DATE	BY
SURVEYED	BY
NO. OF BOOKS	NO. OF SHEETS
NO. OF SHEETS	NO. OF SHEETS
AREAS CHECKED	AREAS CHECKED

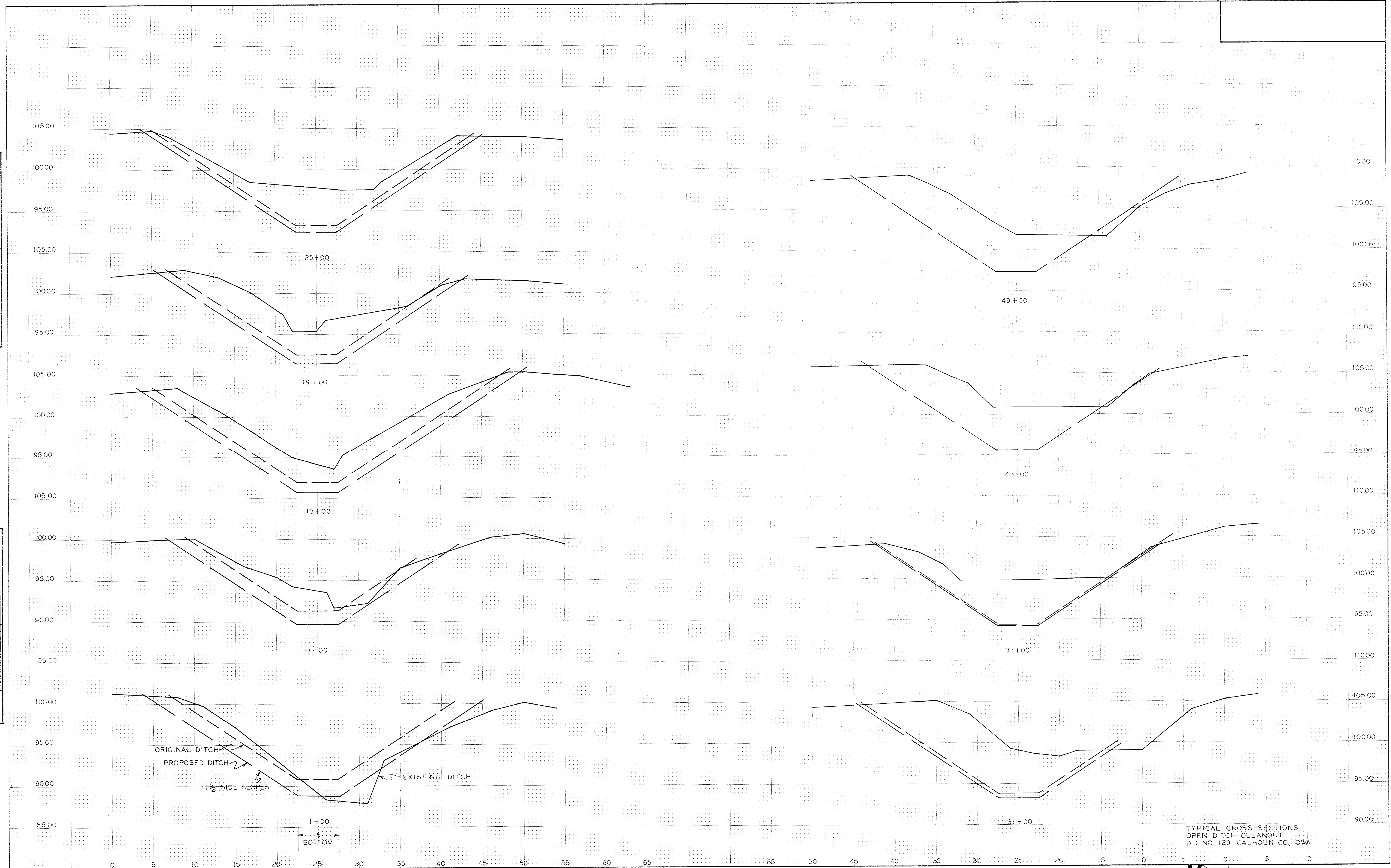


PLATE 3-FULL CROSS SECTION-FULL DOT
PRINTED IN U.S.A.

M.H.F. ENGINEERING, P.C.
 ENGINEERS - LAND SURVEYORS
 P.O. BOX 68
 Jefferson, Iowa 50129
 Ph: 641/266-4101

90061-3