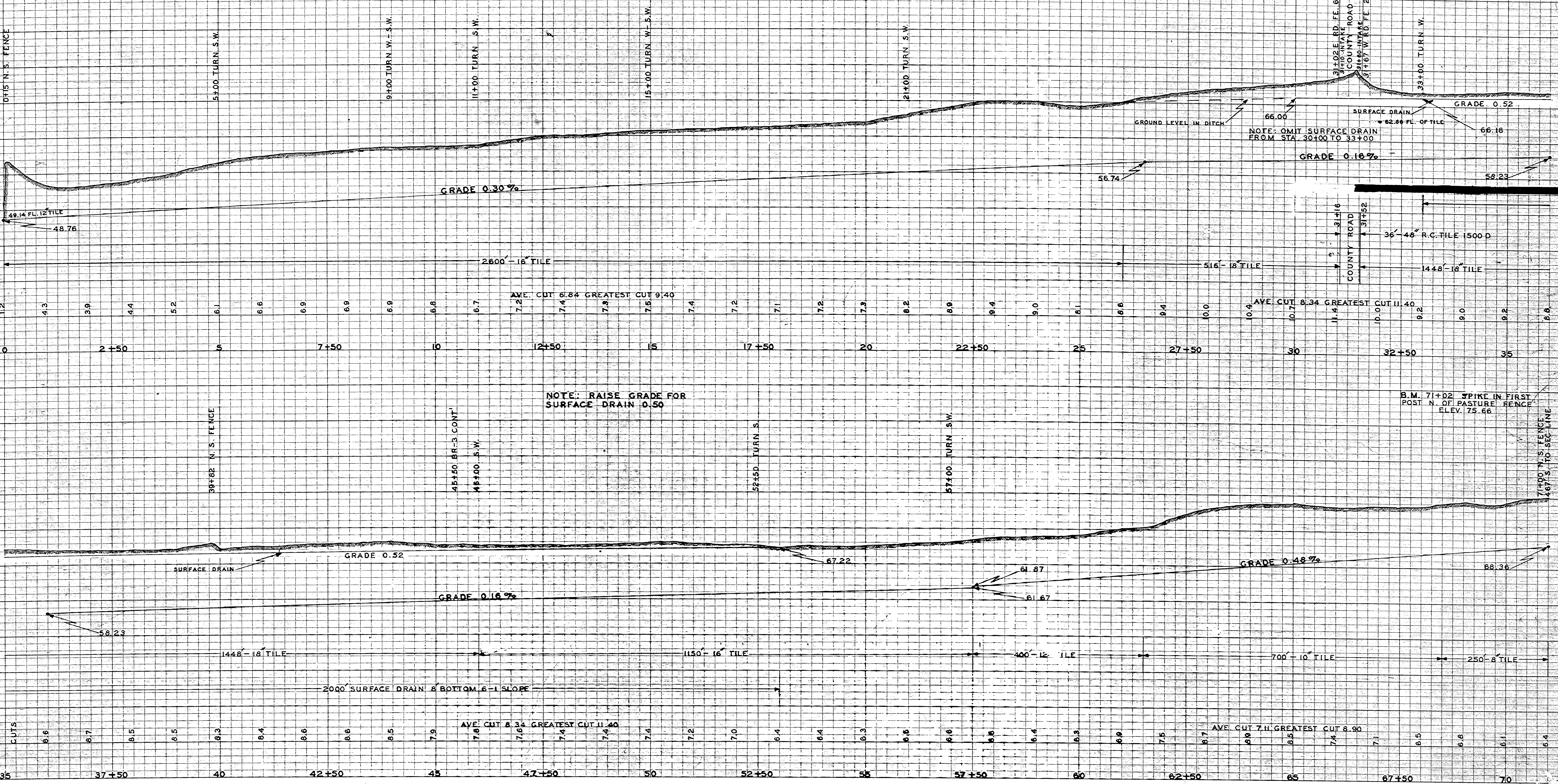


PROFILE OF
 PT. SEC. 32-33 GREENFIELD TWP. T. 88 N. R. 31 W.
 PT. SEC. 5 CEDAR TWP. T. 87 N. R. 31 W.
 CALHOUN COUNTY, IOWA
 W. C. OTTO SAC. CITY, IOWA JAN. 18, 1955
 D. D. NO. 285
 SHEET 2 OF 3 SHEETS

B.M. 0+00 SPIKE IN POST
 SOUTH OF TILE
 ELEV. 56.98

B.M. 31+02 TOP OF FIRST RING
 EAST END NORTH RD. CULV.
 ELEV. 68.77



NOTE: RAISE GRADE FOR
 SURFACE DRAIN 0.50

NOTE: OMIT SURFACE DRAIN
 FROM STA. 30+00 TO 33+00